

NEVADA REAL-TIME LABOR MARKET INFORMATION



Construction Sector 12-Months Ending September 2017





Executive Summary

- ❑ From October 2016 – September 2017, there were 2,141 online job postings in Nevada’s construction sector.
 - ❑ The most recent employment numbers from the QCEW program (2016:IIQ through 2017:IQ) show an increase of 5,367 jobs from the same period a year earlier. In contrast, there were 2,382 online job postings from over the same period.
- ❑ Construction weekly wages in Nevada averaged \$1,063 in 2016.
- ❑ The industries with the largest volume of online job ads were: building equipment contractors, residential building construction, and nonresidential building construction.
 - ❑ Building equipment contractors came in at 642 ads in the 12 months ending September, 2017.
 - ❑ Using the most recent data from QCEW, there was a year-over-year increase of 730 jobs in the building equipment contractors industry.
- ❑ During the last 12 months, ending in September, there were 1,369 full-time postings (97.7% of the total) and 32 part-time postings. The Current Population Survey data shows that 76.4% of current employment in all Nevada’s industries is full-time.



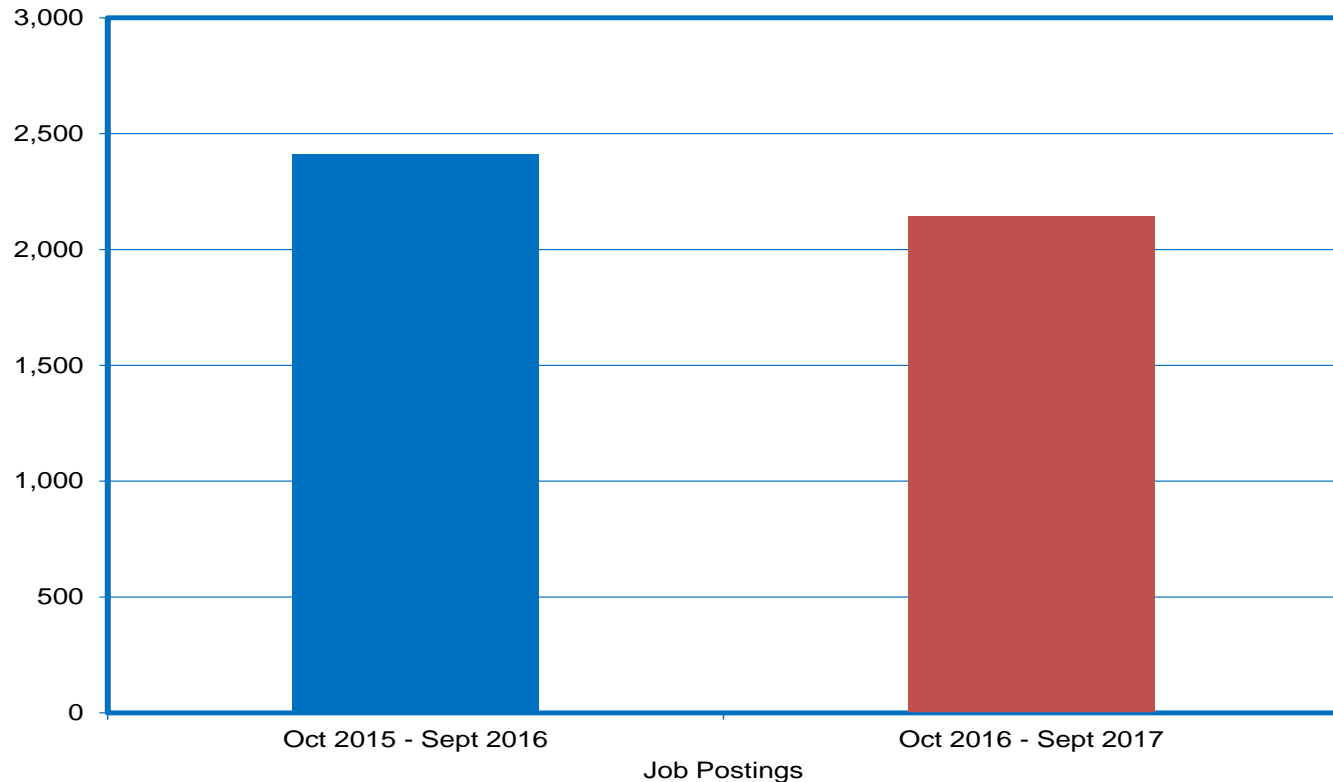
Executive Summary Continued

- ❑ The specialized skills with the largest volume of job ads were: construction management, repair, and scheduling.
- ❑ The baseline skills with the largest volume of job postings were: communication skills, physical demand, and planning.
- ❑ The occupations with the largest volume of job ads were: construction managers, electricians, and general maintenance and repair workers.
 - ❑ Construction managers came in at 219 ads in the 12 months ending in September.
 - ❑ The most recent data from Occupational Employment Statistics (OES) shows there were 3,220 construction managers in Nevada in 2016.
- ❑ The employer with the most online job postings was D.R. Horton, with 65 ads.
- ❑ There are significant limitations in the use of online job postings. For a list of these limitations see last page of this report.



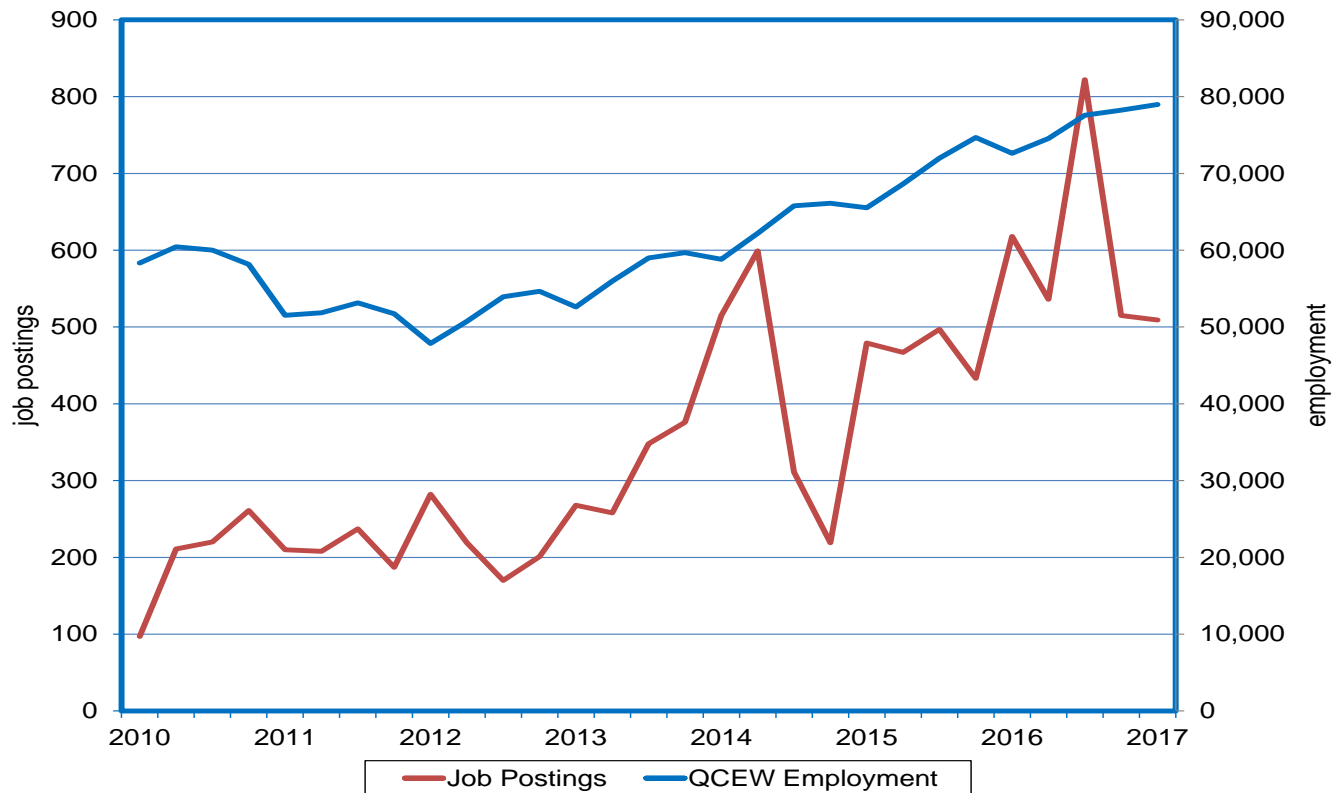
2,141 Total Jobs Ads from October 2016 – September 2017

Burning Glass job postings



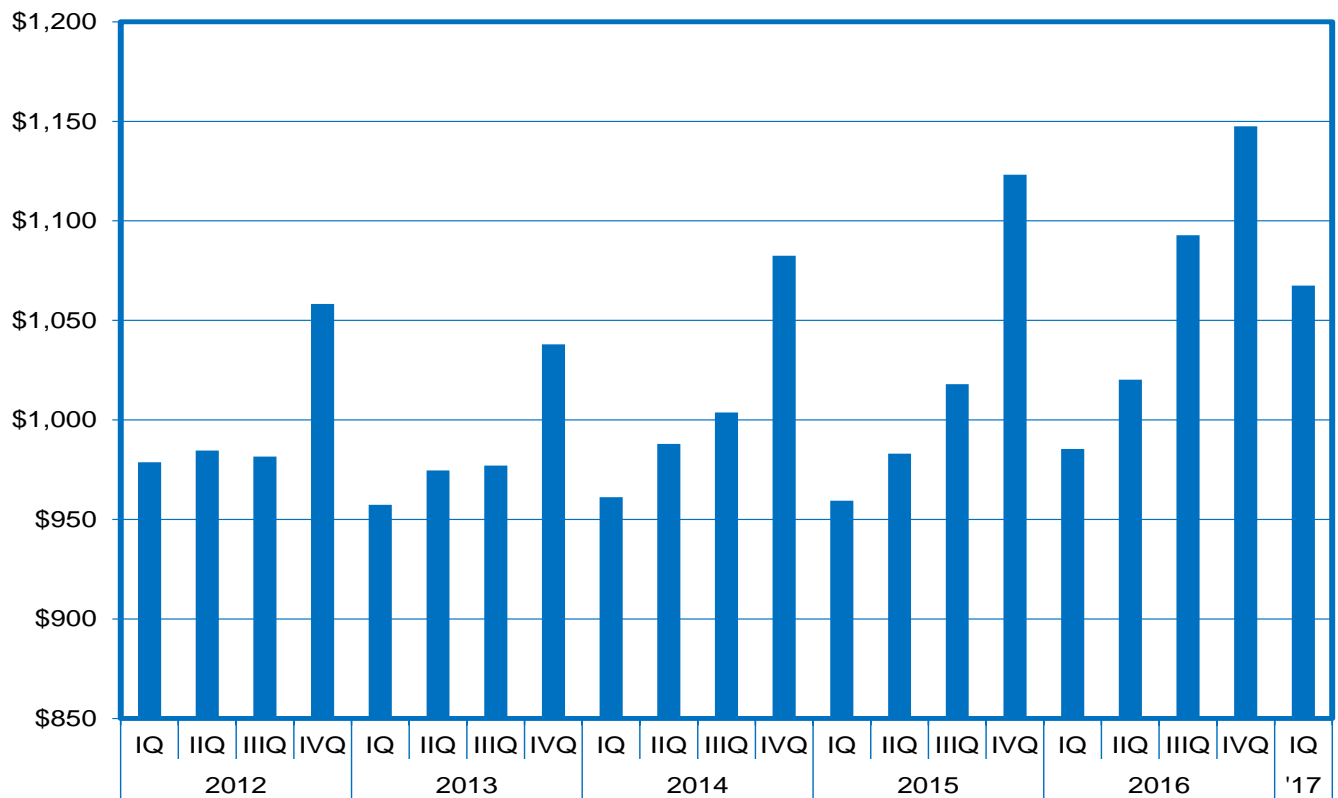
5,367 Jobs Added During 2016:IIQ – 2017:IQ; 2,382 Online Job Postings During Same Period

QCEW employment data vs. Burning Glass job postings



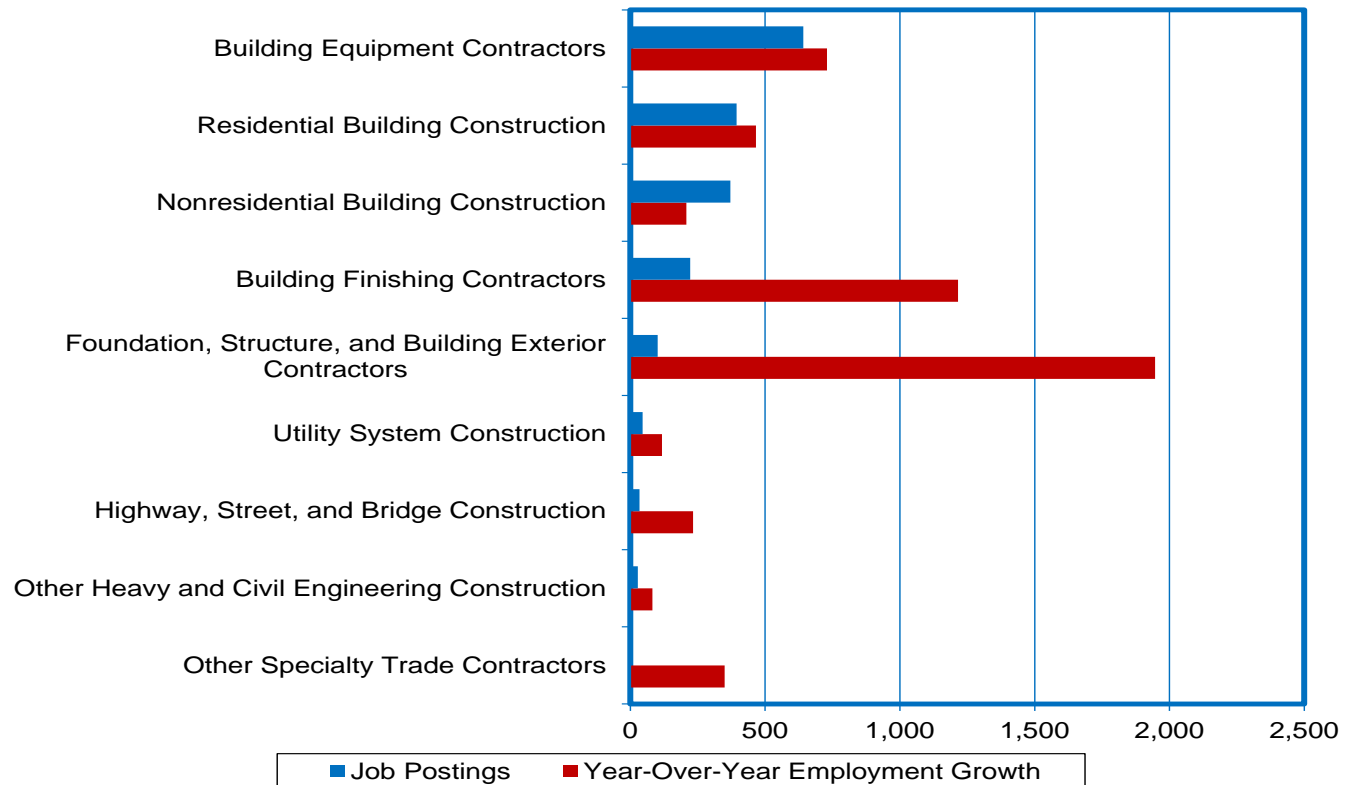
Average Weekly Wage of \$1,063 in 2016

Quarterly Census of Employment and Wages data



642 Building Equipment Contractors Job Postings; Meanwhile, Building Equipment Contractors Added 730 Jobs During 2016:IIQ through 2017:IQ

top industries; Burning Glass jobs postings vs. QCEW employment data

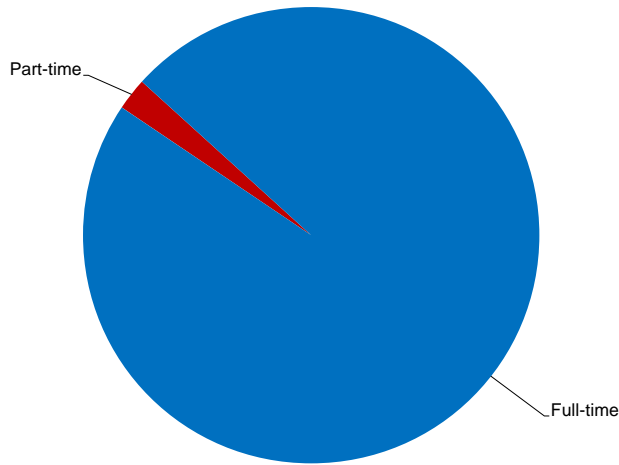


86.1% of job postings included industry detail

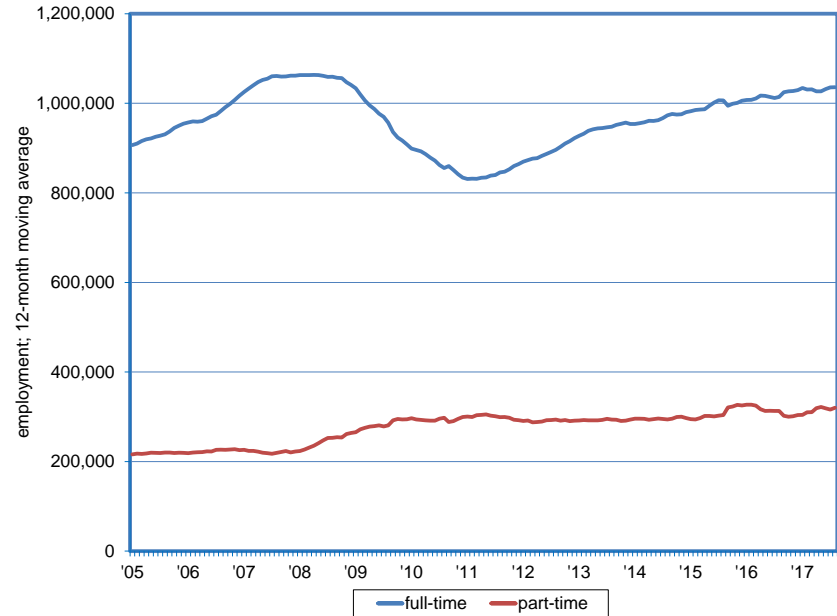


1,369 Full-Time Ads, 32 Part-Time Ads: Meanwhile, 76% of Employment is Full-Time in August

full-time and part-time job postings; Burning Glass data vs. Current Population Survey data



Burning Glass
(Construction)



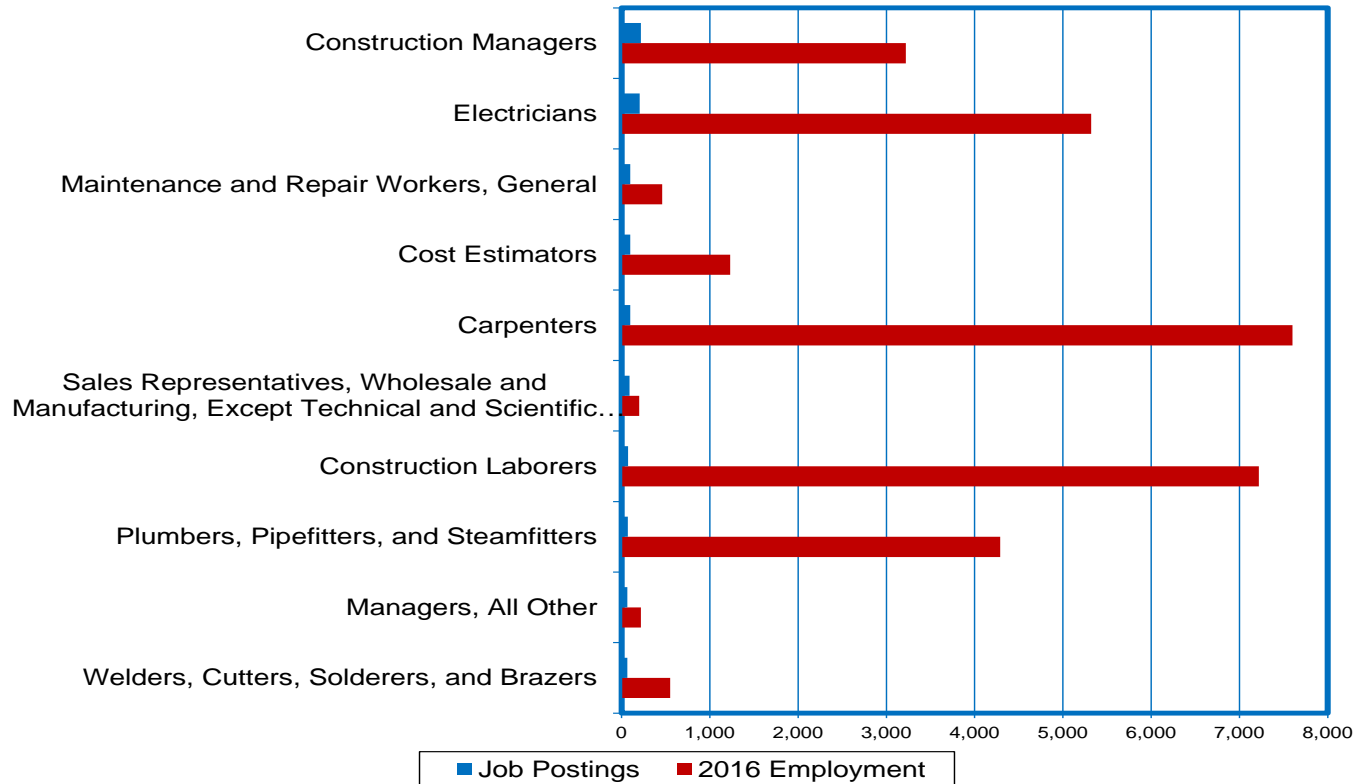
Current Population Survey
(Includes all industries)

65.4% of job postings specified whether the position was full-time or part-time



219 Job Posts for Construction Managers; Meanwhile, Employment Registered at 3,220 Construction Managers in 2016

top occupations in demand; Burning Glass data vs. OES employment data

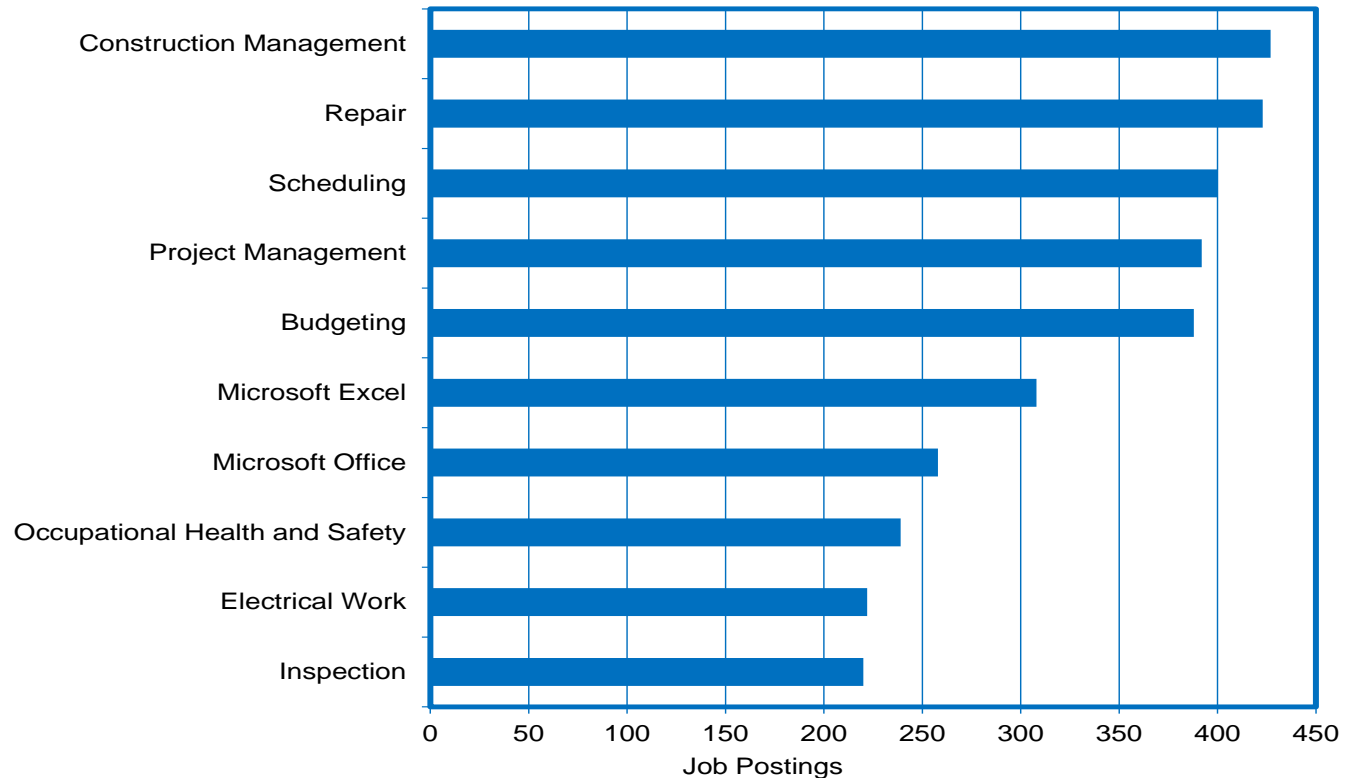


95.4% of job postings specified an occupation



Construction Management Skills Requested in 427 Job Ads

top specialized skills in job postings; Burning Glass

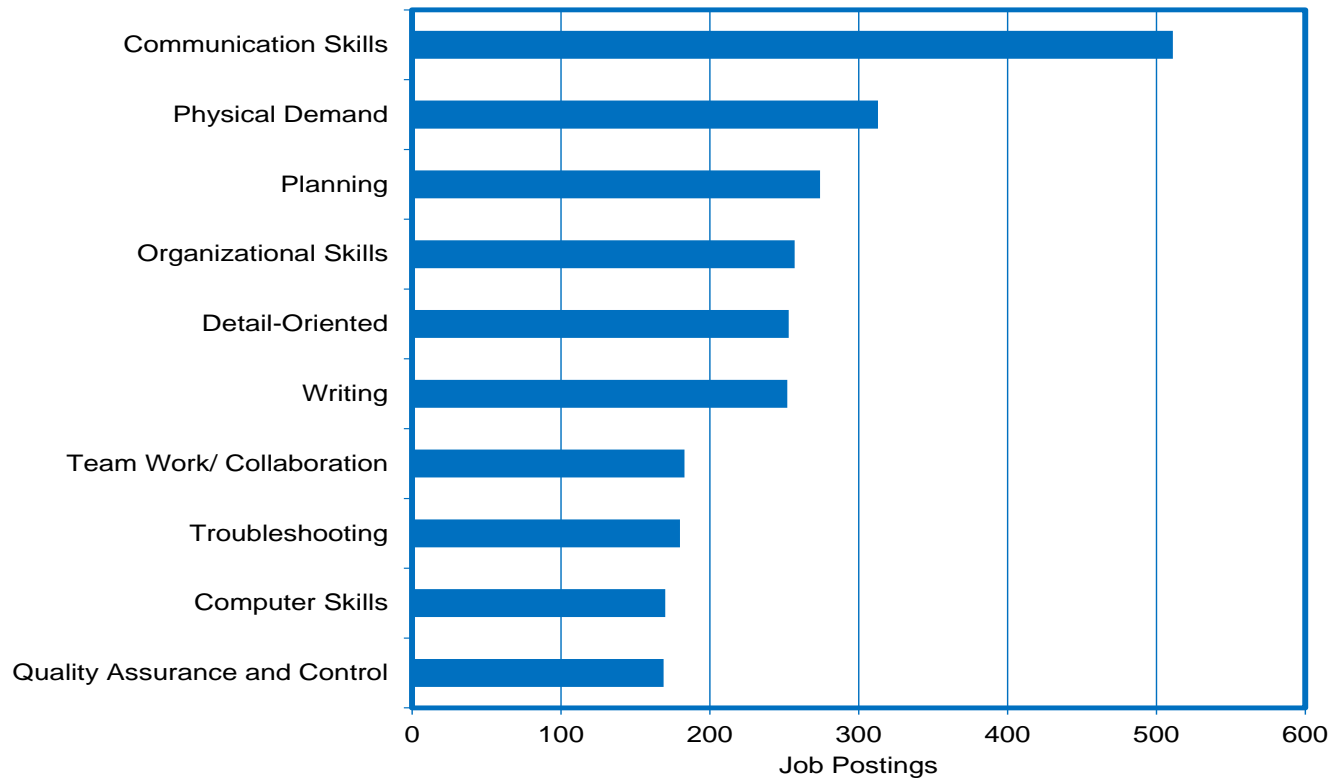


80.9% of job postings specified specialized skills information



Communication Skills Requested in 511 Job Ads

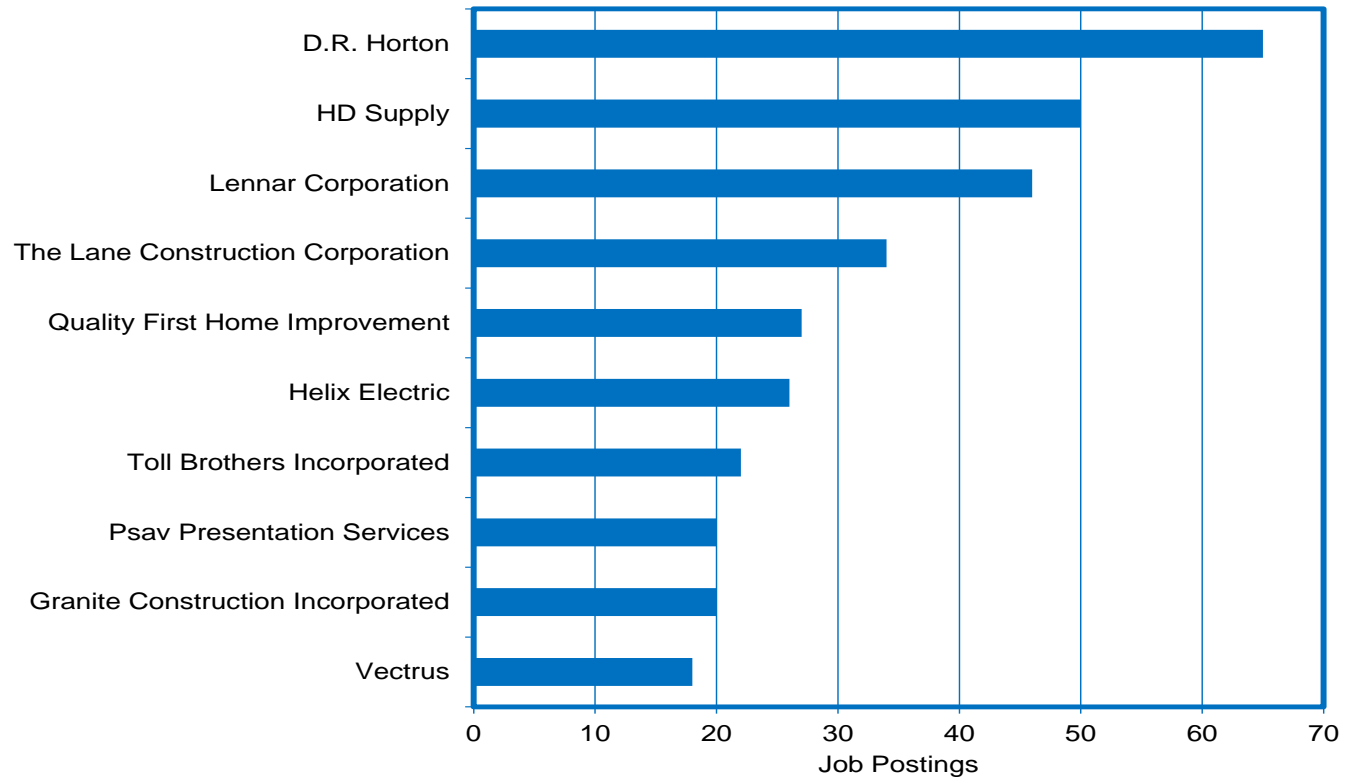
top baseline skills in job postings; Burning Glass



80.9% of job postings specified baseline skills information



D.R. Horton posted 65 Ads top employers; Burning Glass data



49.9% of job postings specified an employer



Limitations

- ❑ Jobs requiring low skills/low wages tend to use alternative methods of attracting job seekers and are under represented in online ads.
- ❑ Internal company hiring and union hiring are often not captured by online ads.
- ❑ Online job posting volume does not necessarily correlate with the level of job openings or hiring.
- ❑ The percentage of job postings that specify a certification is small limiting how representative the data is.
- ❑ Algorithmic ad parsing can lead to miscoding occupations and skills due to similarities between abbreviations and other letter combinations, etc.
- ❑ In online job postings Burning Glass reports licenses and certifications together.
- ❑ The mean salary data in job postings reflects the salary listed by employers in job postings, adjusted to be equivalent to a full-time, annual wage. If a salary range is specified, the median of the range used.
- ❑ High ad volume often occurs for occupations/industries that are having difficulty finding qualified candidates, high turnover positions/recurring openings, or when companies are building large candidate pools.
- ❑ Online job postings should only be used with caution when developing/analyzing time series trends due to the constant changes in the rate of online advertising usage and in the methods used for collecting the data.



For Additional Information, Please Contact

Nevada Department of Employment, Training and Rehabilitation Research and Analysis Bureau

Bill Anderson
Chief Economist
wdanderson@nvdetr.org

Christopher Robison
Supervising Economist
c-robison@nvdetr.org

Hayley Smith-Kirkham
Economist
h-smith-kirkham@nvdetr.org

(775) 684-0450
<http://www.nevadaworkforce.com>
follow us on Twitter @nvlabormarket

Silver State Solutions is Nevada's employment, career, and education resource. Powered by Burning Glass Technologies, it provides career guidance, a real-time job bank and personalized employment matching for jobseekers and offers a searchable workforce database for businesses looking for qualified candidates. Within Solutions' suite of tools is the Labor Insight application, which generates real-time labor market information via current assessments of online job posting activity.

