

NEVADA REAL-TIME LABOR MARKET INFORMATION



Mining Sector 12-Months Ending March 2017





Executive Summary

- ❑ From April 2016 – March 2017, there were 740 online job postings in Nevada’s mining sector.
 - ❑ The most recent employment numbers from the QCEW program (year ending 2016:IIIQ) show an decrease of 760 jobs over-the-year. In contrast, over the same period, there were 580 online job postings.
- ❑ During the last 12 months ending in March, there were 4,900 full-time job postings (92% of the total) and 430 part-time job postings. The Current Population Survey data shows that 77% of current employment in all Nevada’s industries is full-time.
- ❑ In year ending 2016:IIIQ, mining weekly wages in Nevada averaged \$1,800.
- ❑ The industries with the largest volume of online job ads were: metal ore mining, oil and gas extraction, and support activities for mining.
 - ❑ Metal ore mining came in at 230 ads from April 2016 – March 2017.
 - ❑ Using the most recent data from QCEW (2016:IIIQ) there was a year-over-year increase of 140 jobs in metal ore mining industry.





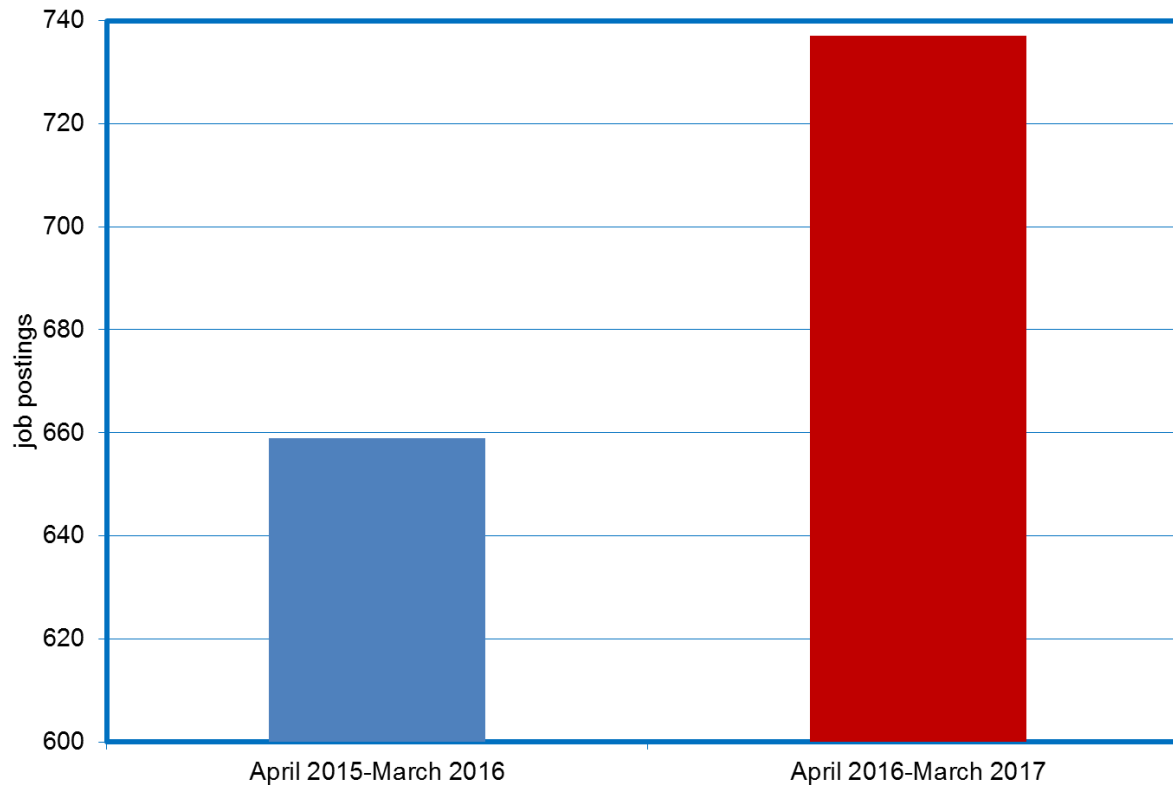
Executive Summary Continued

- ❑ The occupations with the largest volume of job ads were: maintenance and repair workers, general, mining and geological engineers (Including mining safety engineers), and first-line supervisors of mechanics, installers, and repairers.
 - ❑ Maintenance and repair workers came in at 50 ads from April 2016 – March 2017.
 - ❑ The most recent data from Occupations Employment Statistics (OES) shows there were 270 maintenance and repair workers jobs reported in 2016.
- ❑ The specialized skills with the largest volume of job ads were: repair, budgeting, and Microsoft Excel.
- ❑ The baseline skills with the largest volume of job postings were: communication skills, planning skills, and writing skills.
- ❑ The employer with the most online job postings was Newmont Mining, with 150 ads.
- ❑ There are significant limitations in the use of online job postings. For a list of these limitations see last page of this report.



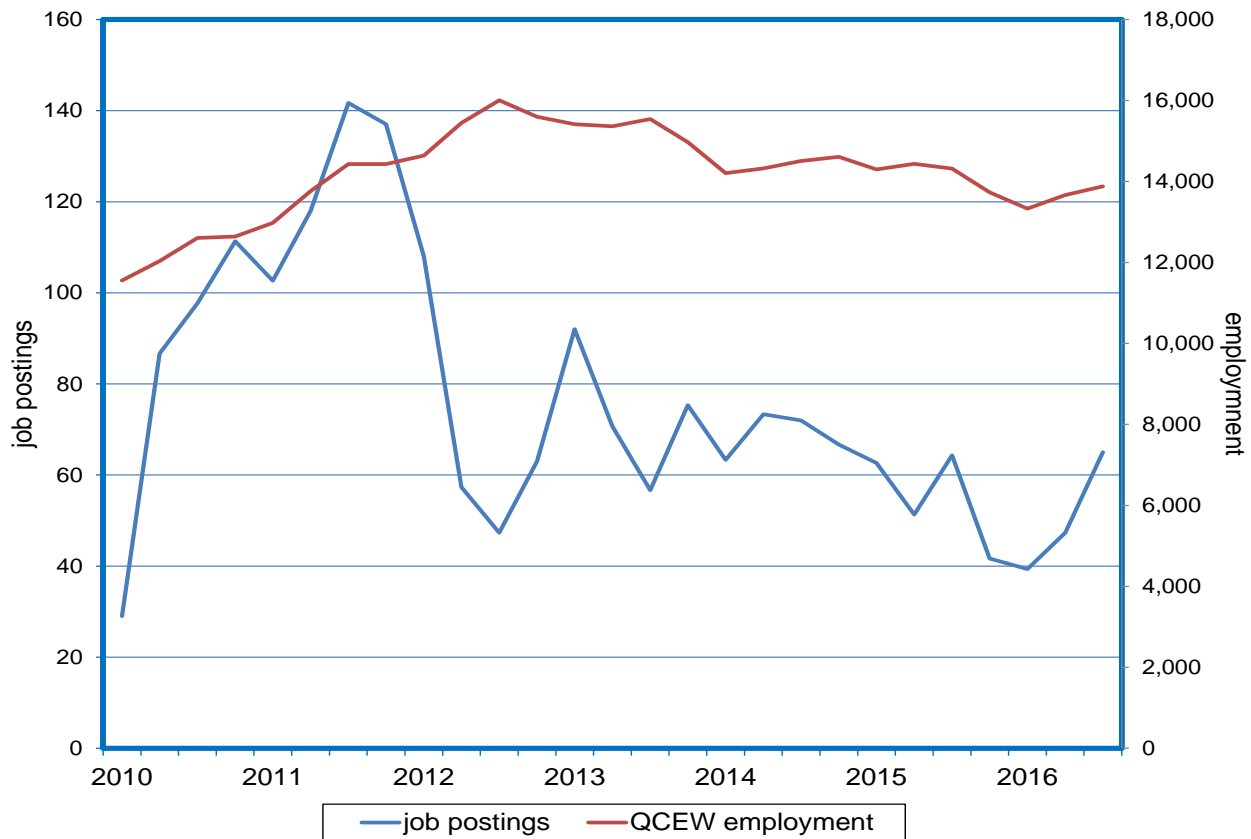
740 Total Jobs Ads from April 2016 – March 2017

Job Postings



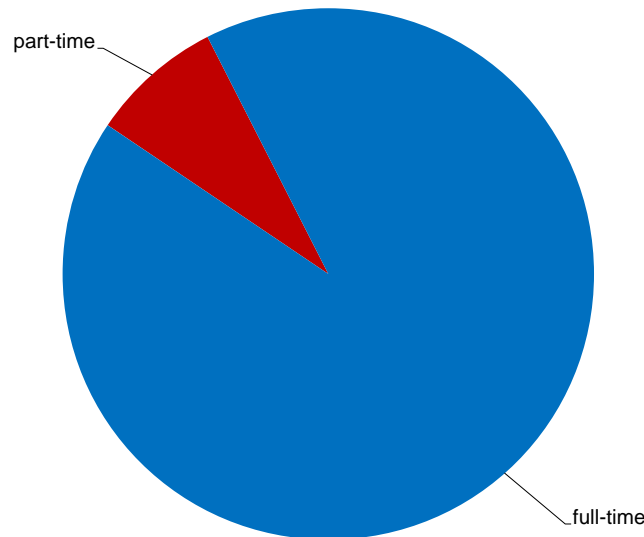
760 Jobs lost in Year Ending 2016 (Y-O-Y); 740 Online Job Postings During Same Period

QCEW Employment Data vs. Silver State Solutions Job Postings

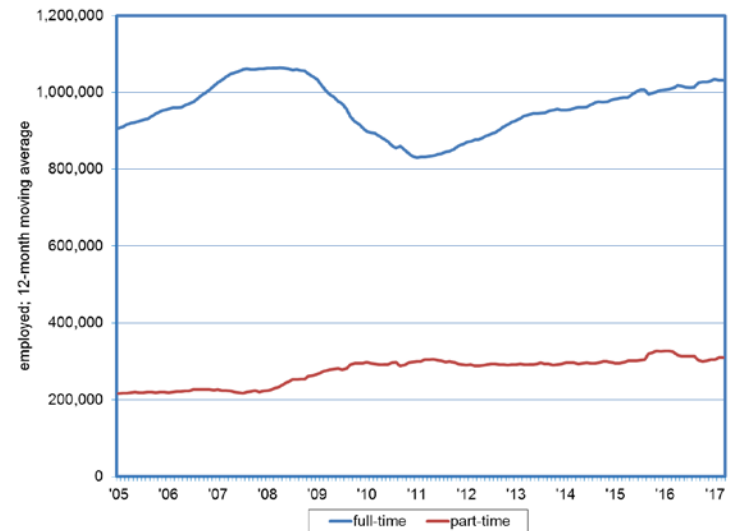


4,900 Full-Time Ads, 430 Part-Time Ads; Meanwhile, 77% of Employment is Full-Time in March

Full-Time and Part-Time Job Postings; Silver State Solutions Data vs Current Population Survey Employment Data



Online Job Ads
(Includes mining industries)



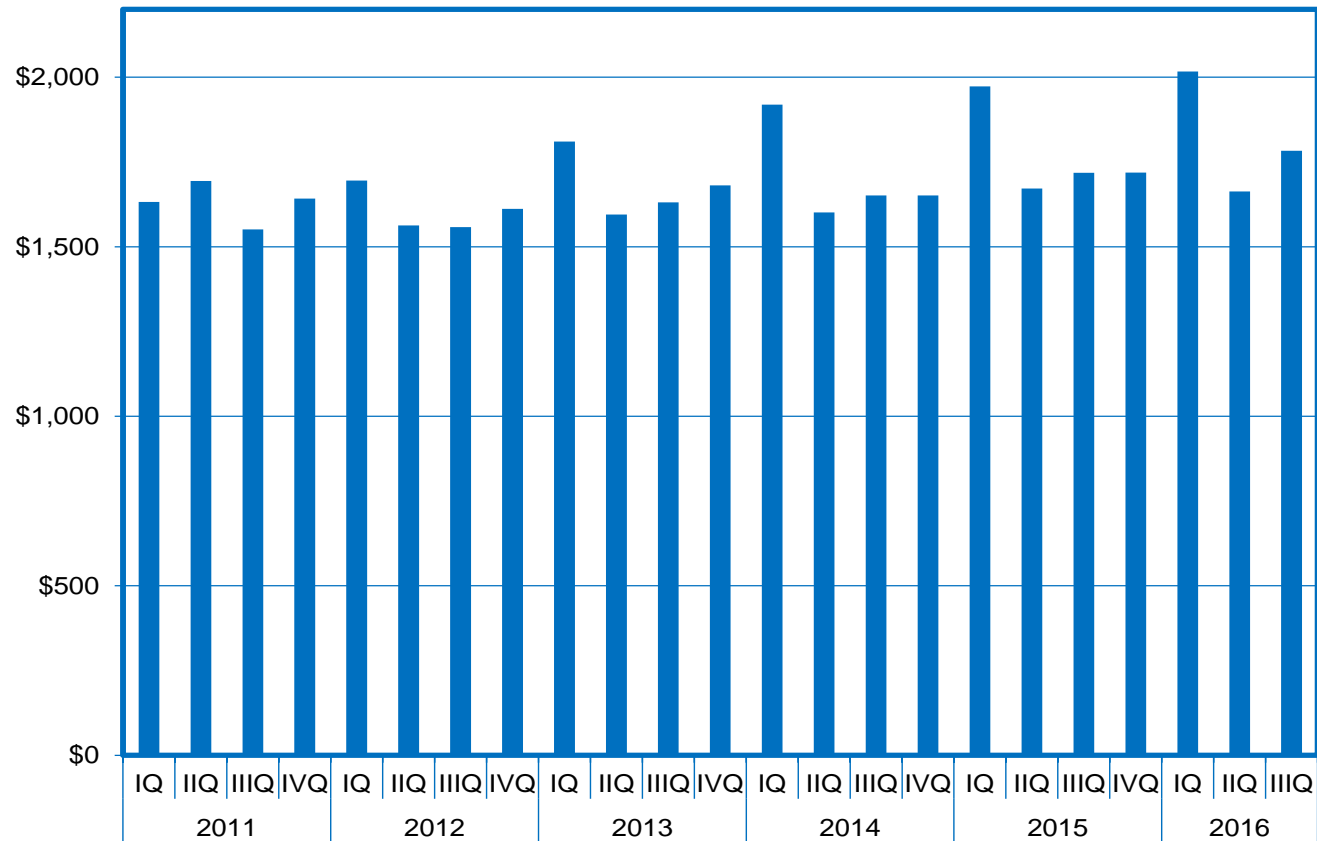
Current Population Survey
(Includes all industries)

60.9% of job postings specified whether the position was full-time or part-time



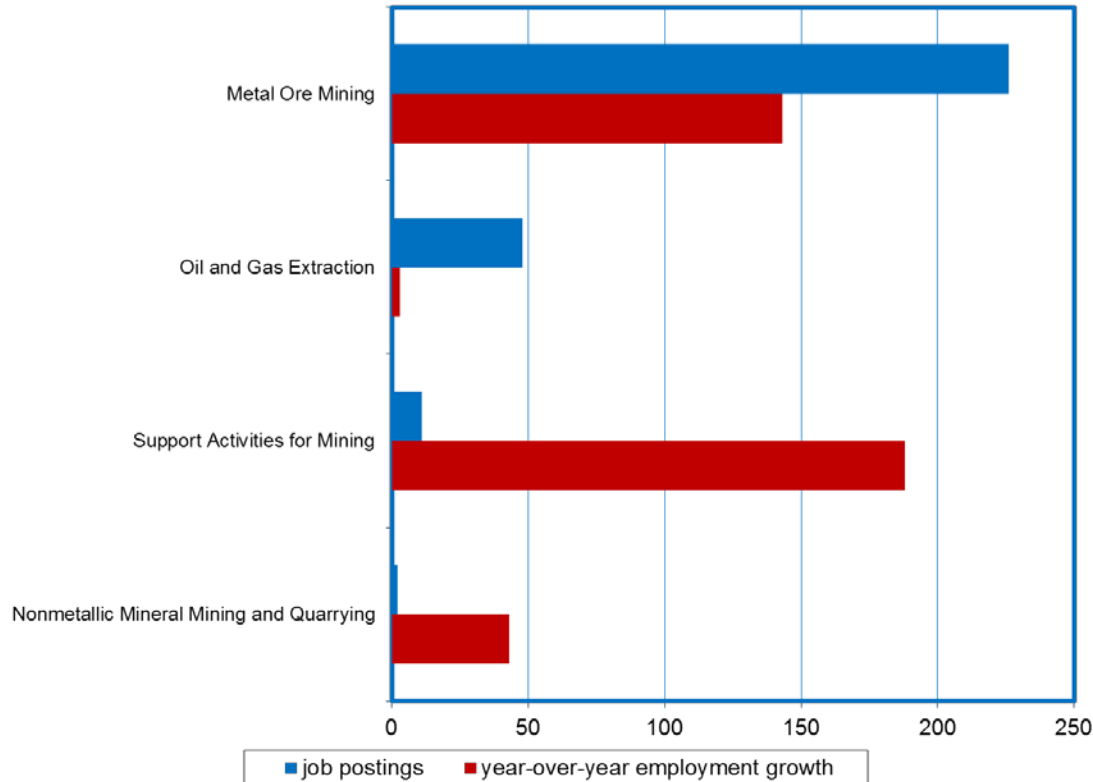
Average Weekly Wage of \$1,800 Year ending 2016:IIIQ

Quarterly Census of Employment and Wages Data



226 Postings in Metal Ore Mining; Meanwhile, Metal Ore Mining added 143 Jobs in Year Ending 2016:IIIQ (Y-O-Y)

Largest Industries; QCEW Employment Data vs Silver State Solutions Job Postings

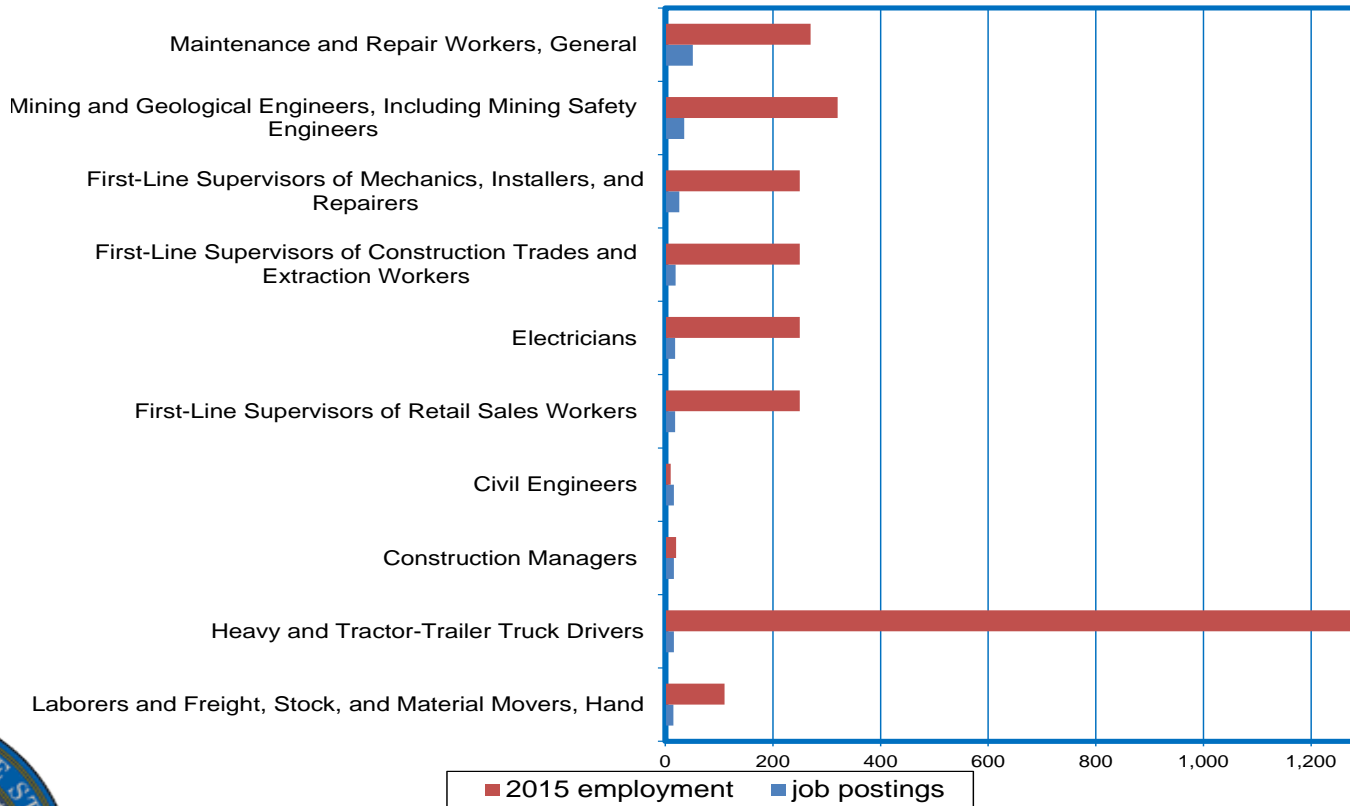


38.9% of job postings specified an industry



50 Maintenance and Repair Workers, General; Meanwhile, Employment registered at 110 in 2016

Top Occupations in Demand; Silver State Solutions Data vs OES Employment Data

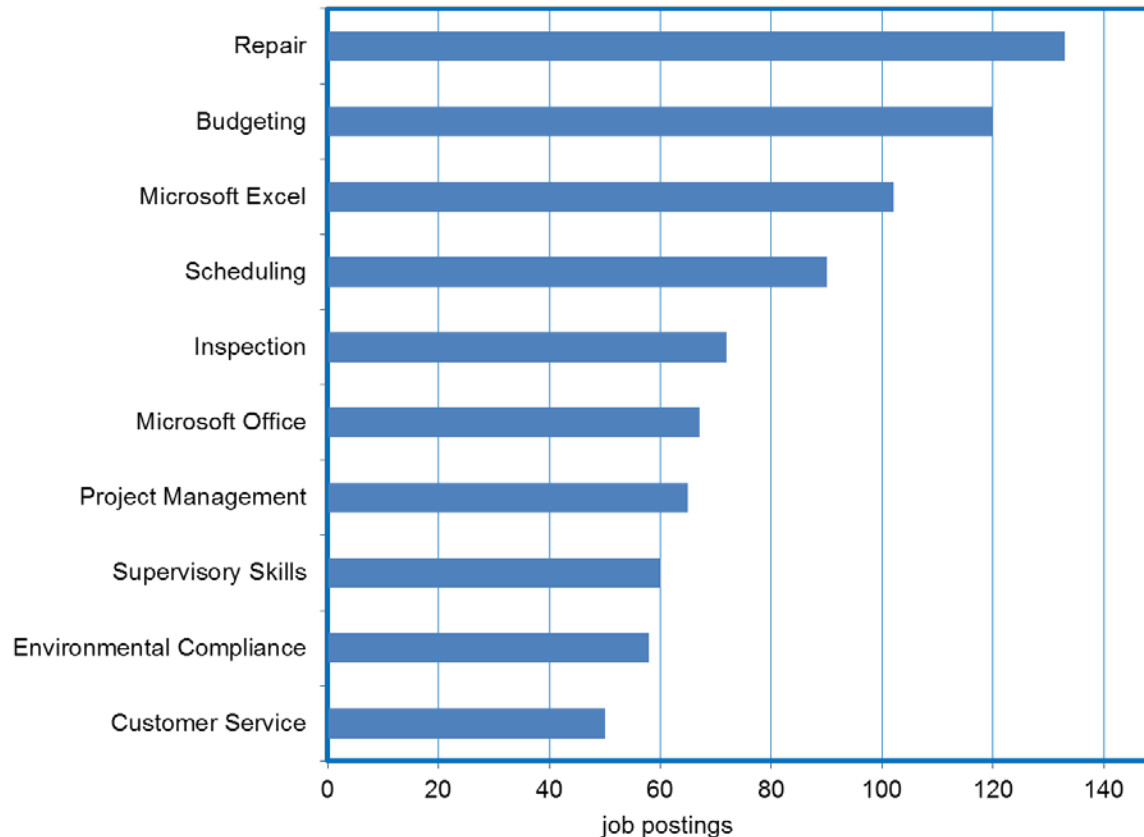


93.9% of job postings specified an occupation



Repair Skills requested in 130 Job Ads

Top Specialized Skills; Silver State Solutions Data

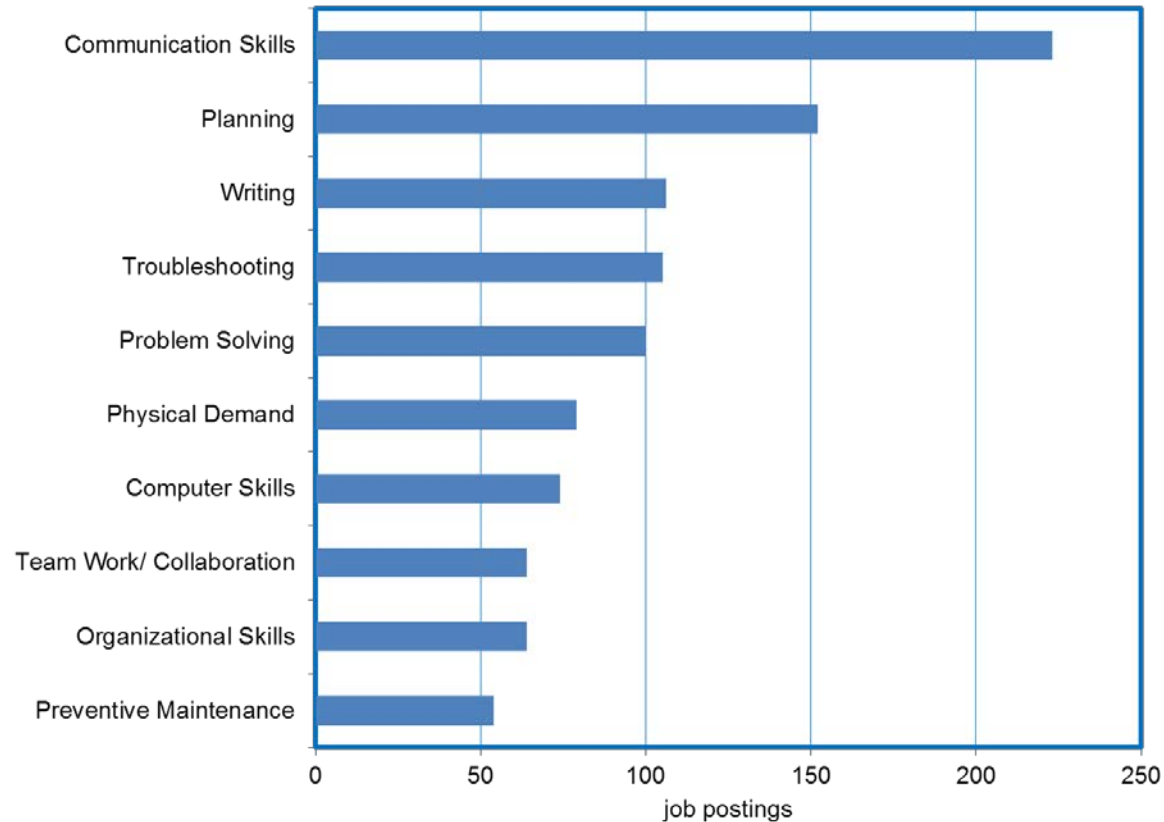


80.3% of job postings specified specialized skills information



Communication Skills requested in 230 Job Ads

Top Baseline Skills; Silver State Solutions Data

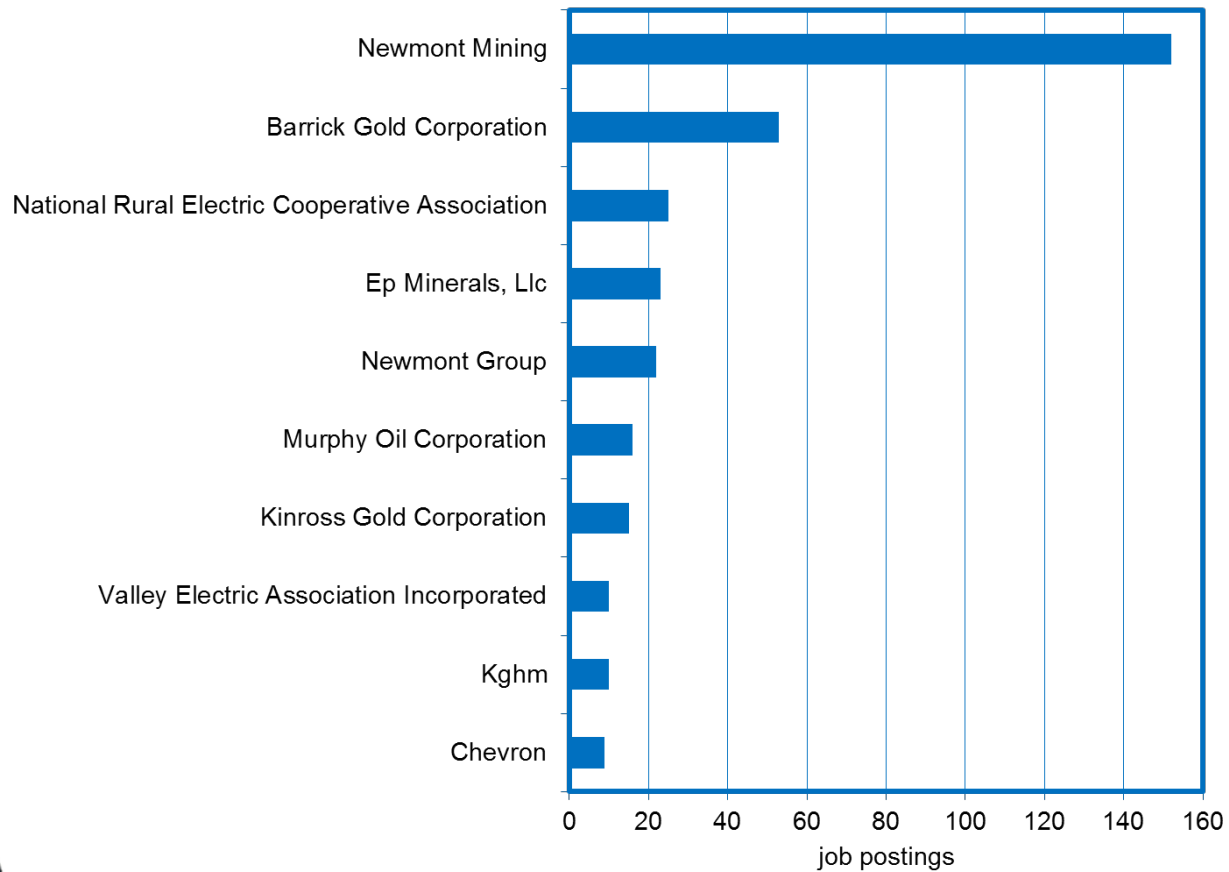


80.3% of job postings specified baseline skills information



Newmont Mining posted 500 Ads

Top Employers; Silver State Solutions Data



65.1% of job postings specified an employer



Limitations

- ❑ Jobs requiring low skills/low wages tend to use alternative methods of attracting job seekers and are under represented in online ads.
- ❑ Internal company hiring and union hiring are often not captured by online ads.
- ❑ Online job posting volume does not necessarily correlate with the level of job openings or hiring.
- ❑ The percentage of job postings that specify a certification is small limiting how representative the data is.
- ❑ Algorithmic ad parsing can lead to miscoding occupations and skills due to similarities between abbreviations and other letter combinations, etc.
- ❑ In online job postings Burning Glass reports licenses and certifications together.
- ❑ The mean salary data in job postings reflects the salary listed by employers in job postings, adjusted to be equivalent to a full-time, annual wage. If a salary range is specified, the median of the range used.
- ❑ High ad volume often occurs for occupations/industries that are having difficulty finding qualified candidates, high turnover positions/recurring openings, or when companies are building large candidate pools.
- ❑ Online job postings should only be used with caution when developing/analyzing time series trends due to the constant changes in the rate of online advertising usage and in the methods used for collecting the data.



For Additional Information, Please Contact

Nevada Department of Employment, Training and Rehabilitation Research and Analysis Bureau

Bill Anderson
Chief Economist
wdanderson@nvdetr.org

Christopher Robison
Supervising Economist
c-robison@nvdetr.org

Tim Wilcox
Economist
trwilcox@nvdetr.org

(775) 684-0450
<http://www.nevadaworkforce.com>
follow us on Twitter @nvlabormarket

Silver State Solutions is Nevada's employment, career, and education resource. Powered by Burning Glass Technologies, it provides career guidance, a real-time job bank and personalized employment matching for jobseekers and offers a searchable workforce database for businesses looking for qualified candidates. Within Solutions' suite of tools is the Labor Insight application, which generates real-time labor market information via current assessments of online job posting activity.

