

Nevada Labor Market Briefing: August 2016

Department of Employment, Training & Rehabilitation

Don Soderberg, Director

Bill Anderson, Chief Economist

Christopher Robison, Economist

Prepared by the Research and Analysis Bureau for
Presentation to EMPLEO: September 2016





State Unemployment Rate

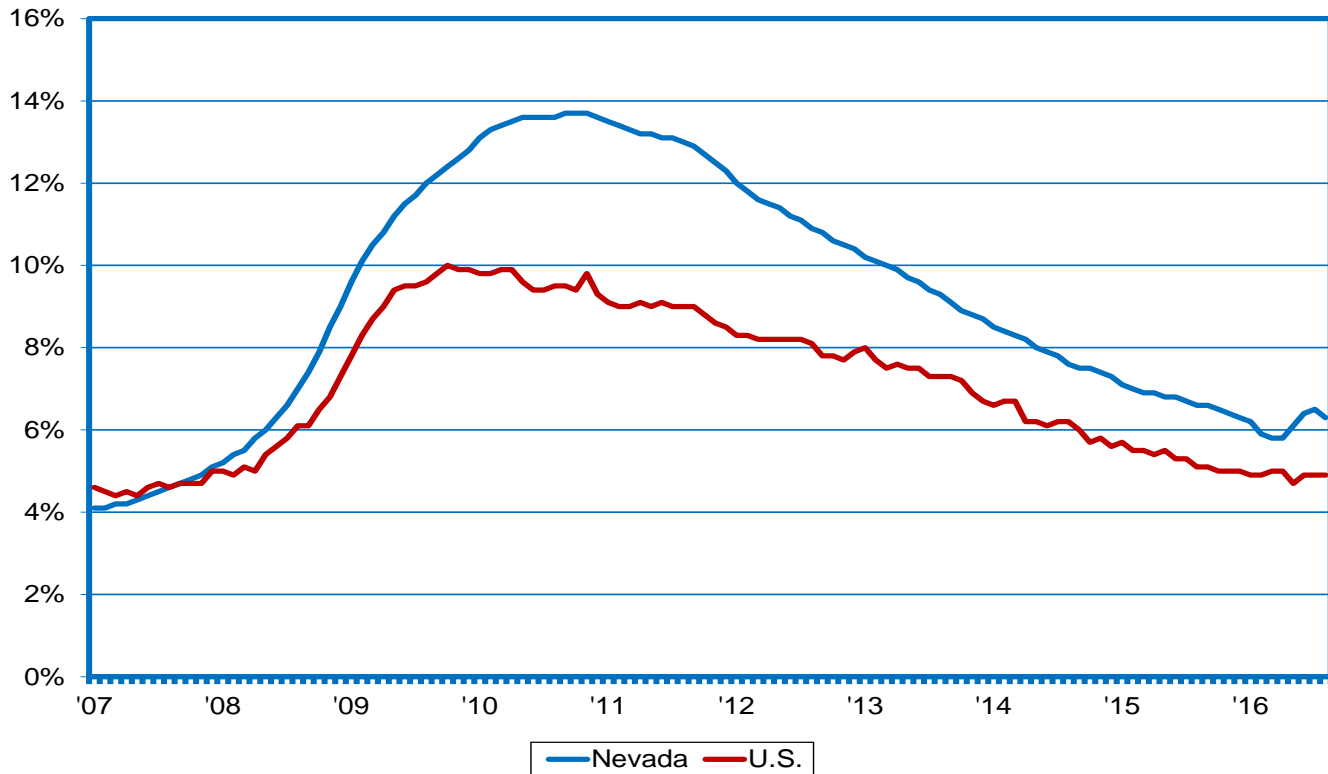
- ❑ 6.3% Unemployment Rate (SA¹)
 - ❑ down 0.2 point from July; down from 6.6% a year ago
 - ❑ decline is much more consistent with underlying trends, unlike previous months' when rate increased, despite solid job growth
 - ❑ off from a recession peak of 13.7%
 - ❑ compares to a 4.9% rate for the U.S.— 1.4 percentage point higher
 - ❑ was more than four points higher at height of recession

¹seasonally adjusted



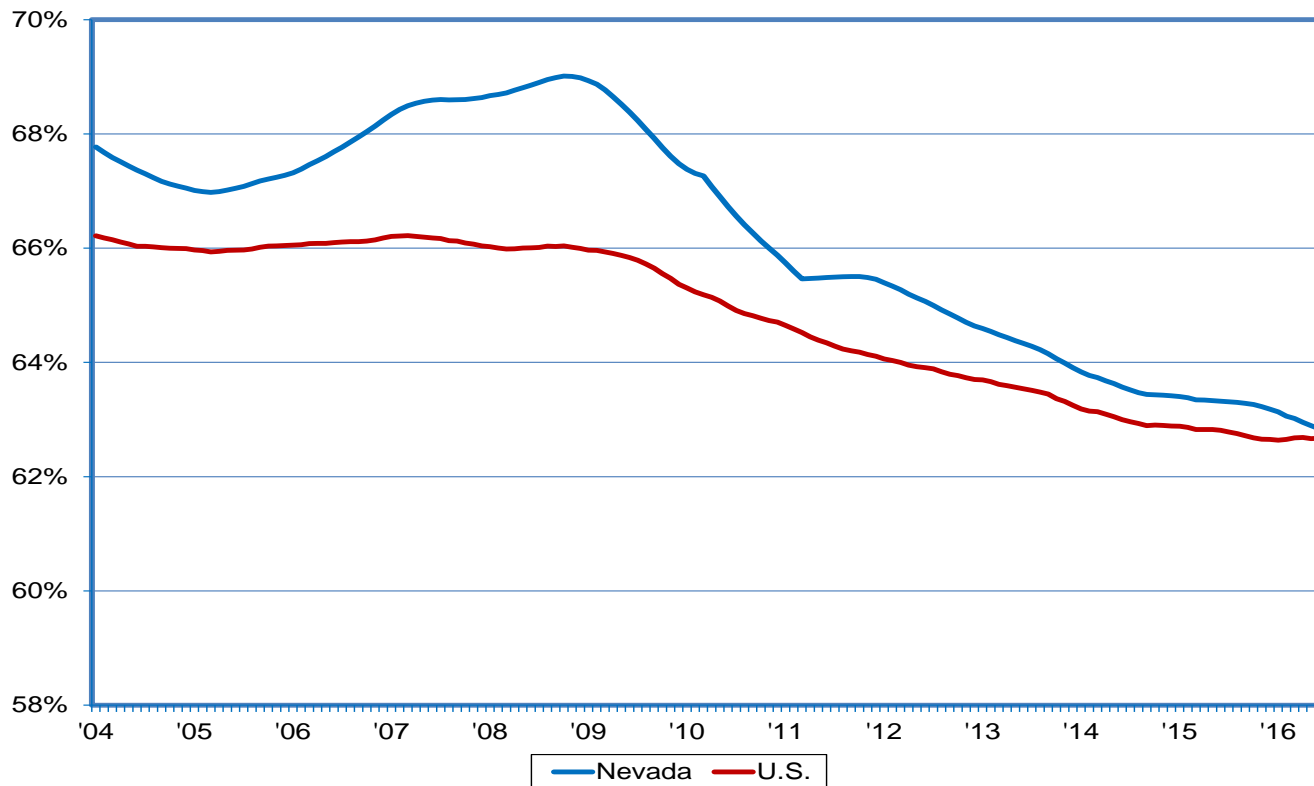
Following 3 Months of Increases, Jobless Rate Heads Down in August

NV vs. the U.S. unemployment rate (SA)



LFPR Trending Higher than U.S.; Declining Over Time Due to Structural/Cyclical Forces

labor force participation rate (12-month moving average)



Including Discouraged Workers Adds 0.4 Point to the “Official” Rate

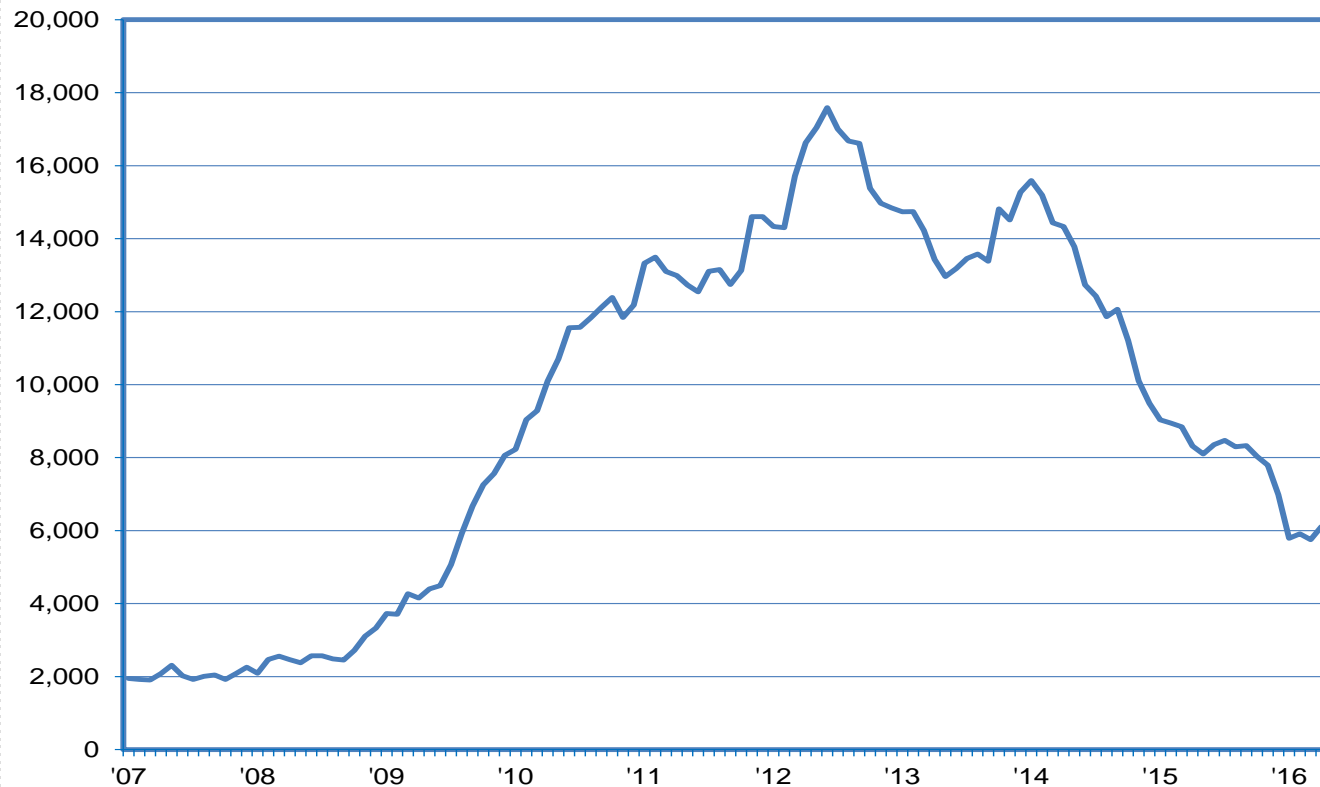
Alternative Measures Of Labor Underutilization

Alternative Measures of Labor Underutilization (Annual Average - 2015:IIIQ through 2016:IIQ)		
Measure	Underutilization Concept	Level
Official Rate	jobless persons available to take a job who have actively sought work in the past four weeks	6.3%
U-1	jobless 15 weeks or longer	2.7%
U-2	job losers and persons losing a temporary job	3.5%
U-3	similar to official rate	6.7%
U-4	U-3 plus discouraged workers	7.1%
U-5	U-4 plus others marginally attached to the labor force	7.9%
U-6	U-5 plus those employed part-time for economic reasons	13.1%
Official Rate: annual average of 2015:IIIQ through 2016:IIQ		



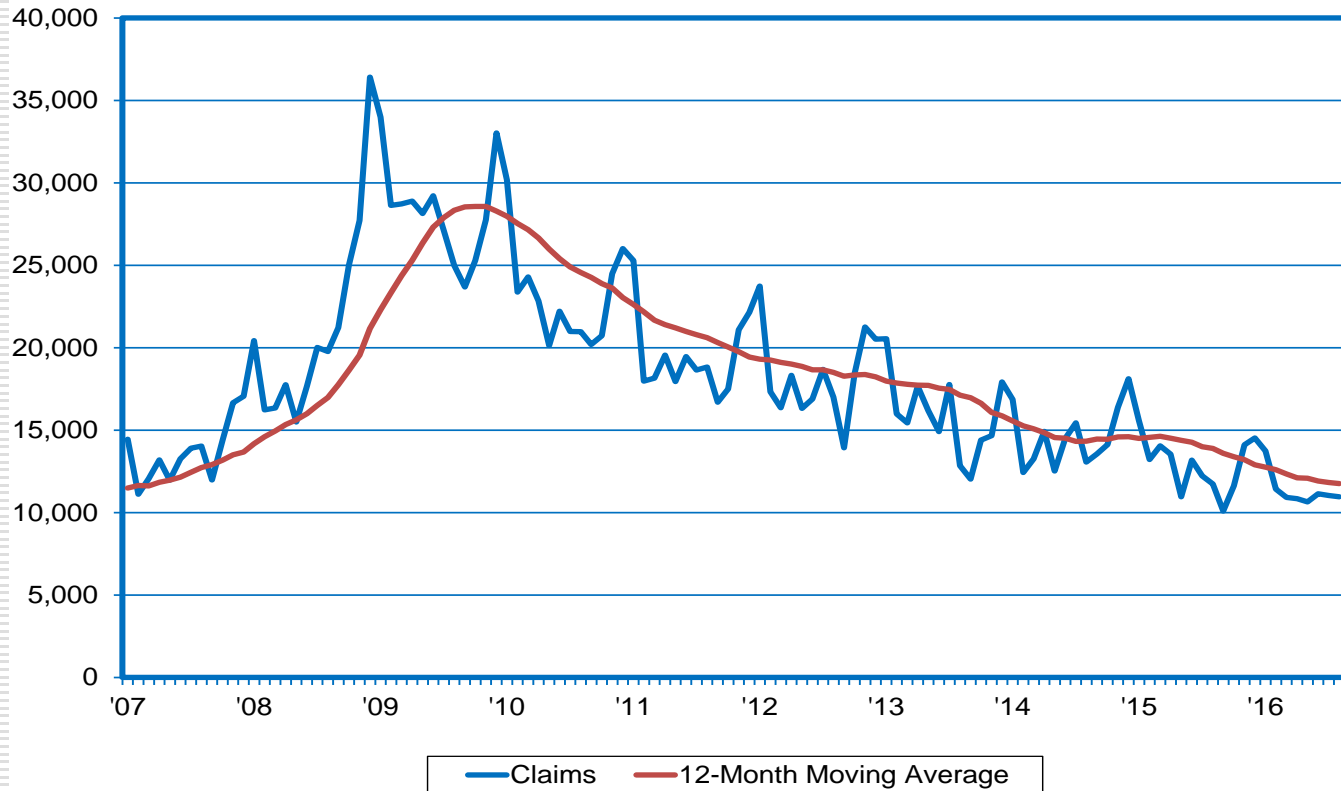
Discouraged Workers Peaked at 18K in Early-2012; Now at 6K

Discouraged Workers Who've Given Up Work Search; 12-Month Moving Avg.



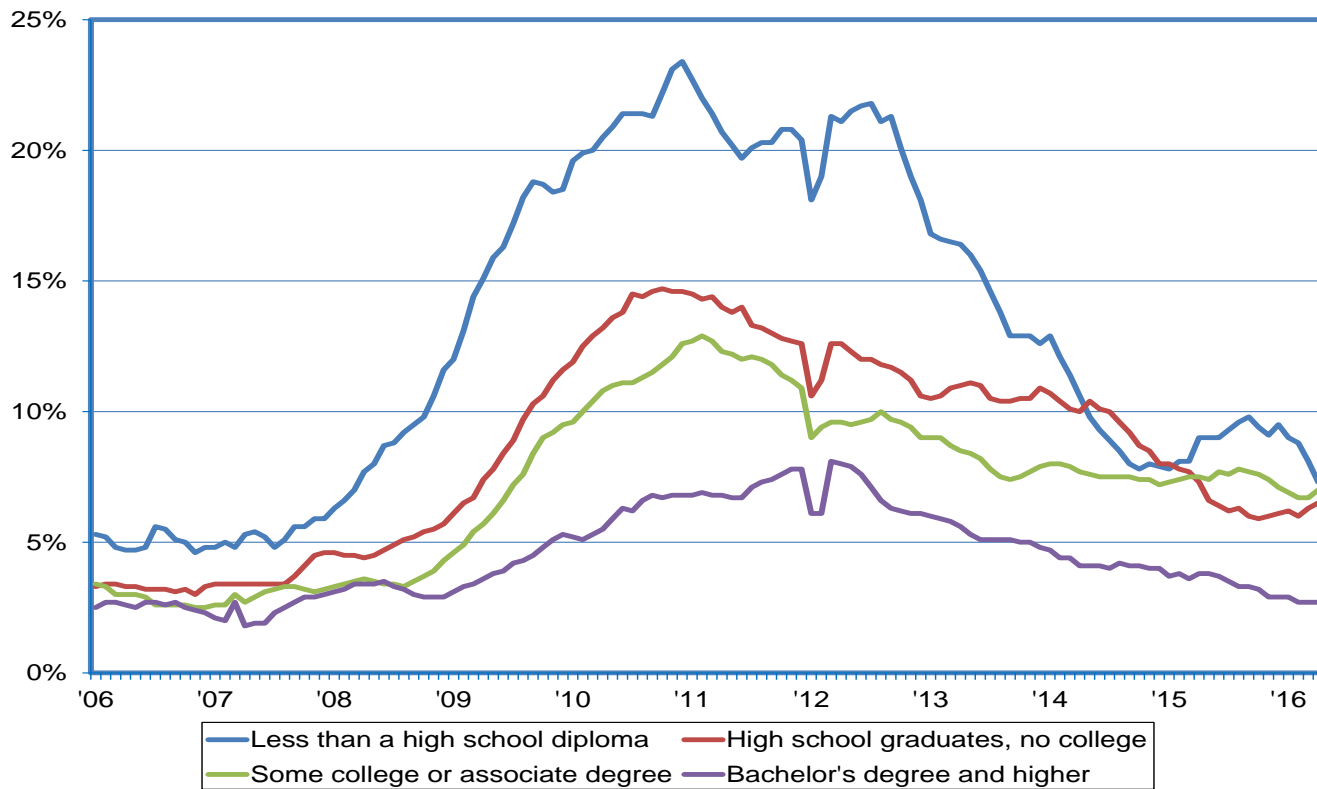
Initial Claims Remain at Lowest Levels in a Decade

initial claims for unemployment insurance



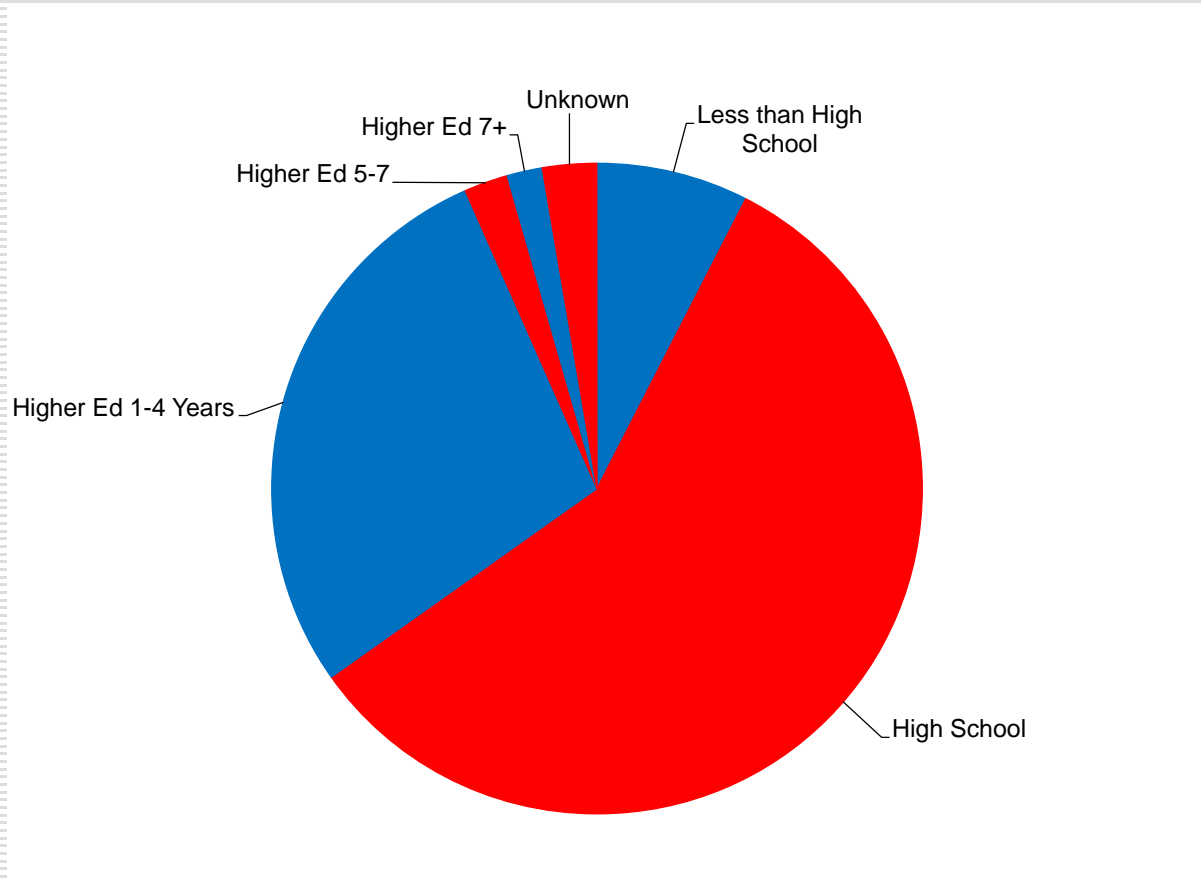
Non-HS Grads Have Highest Unemployment Rate; College Grads+ Have Lowest

Unemployment Rates by Educational Attainment; 12-Month moving Average



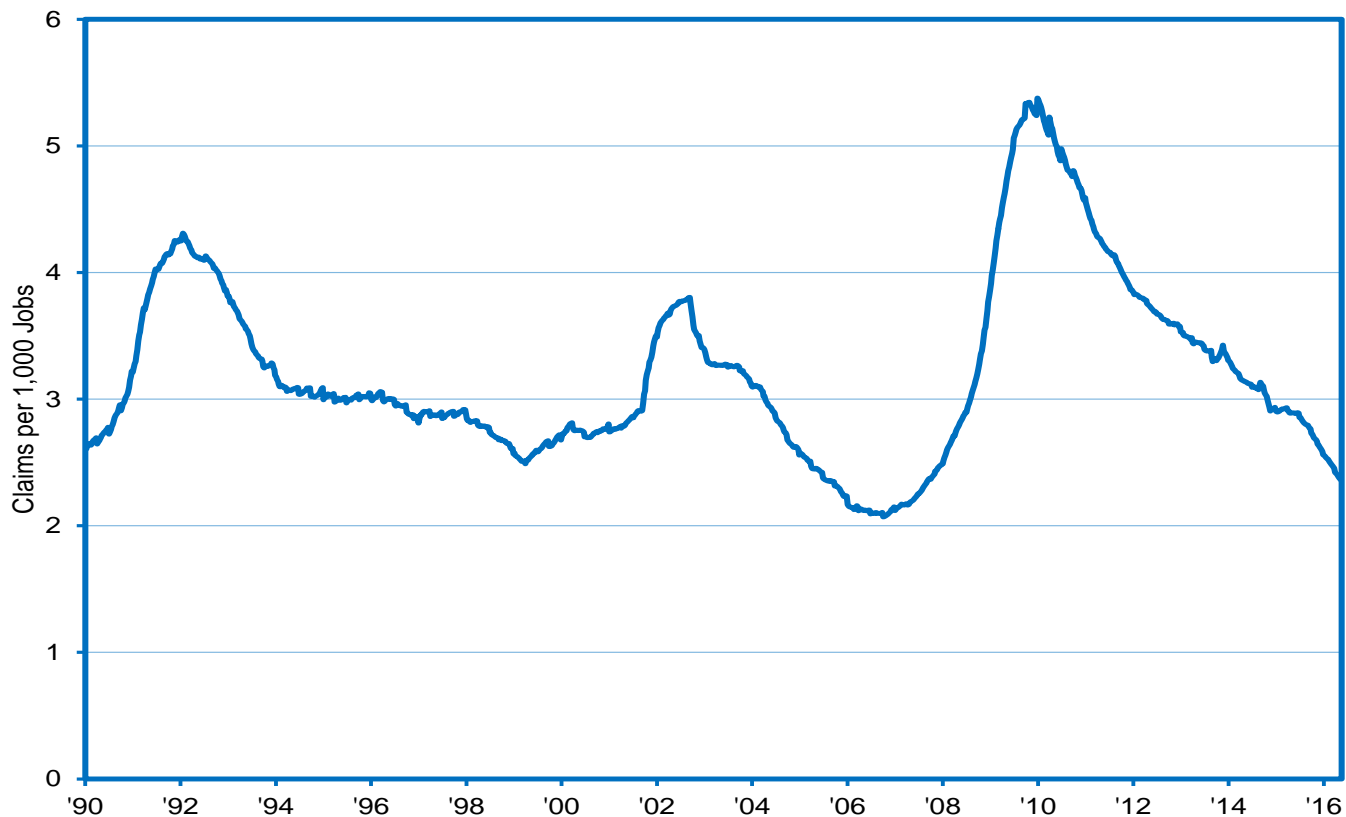
High School Grads (or Less) Account for Nearly Two-Thirds of UI Claimants

Initial Claims for Unemployment Insurance Claimants by Education



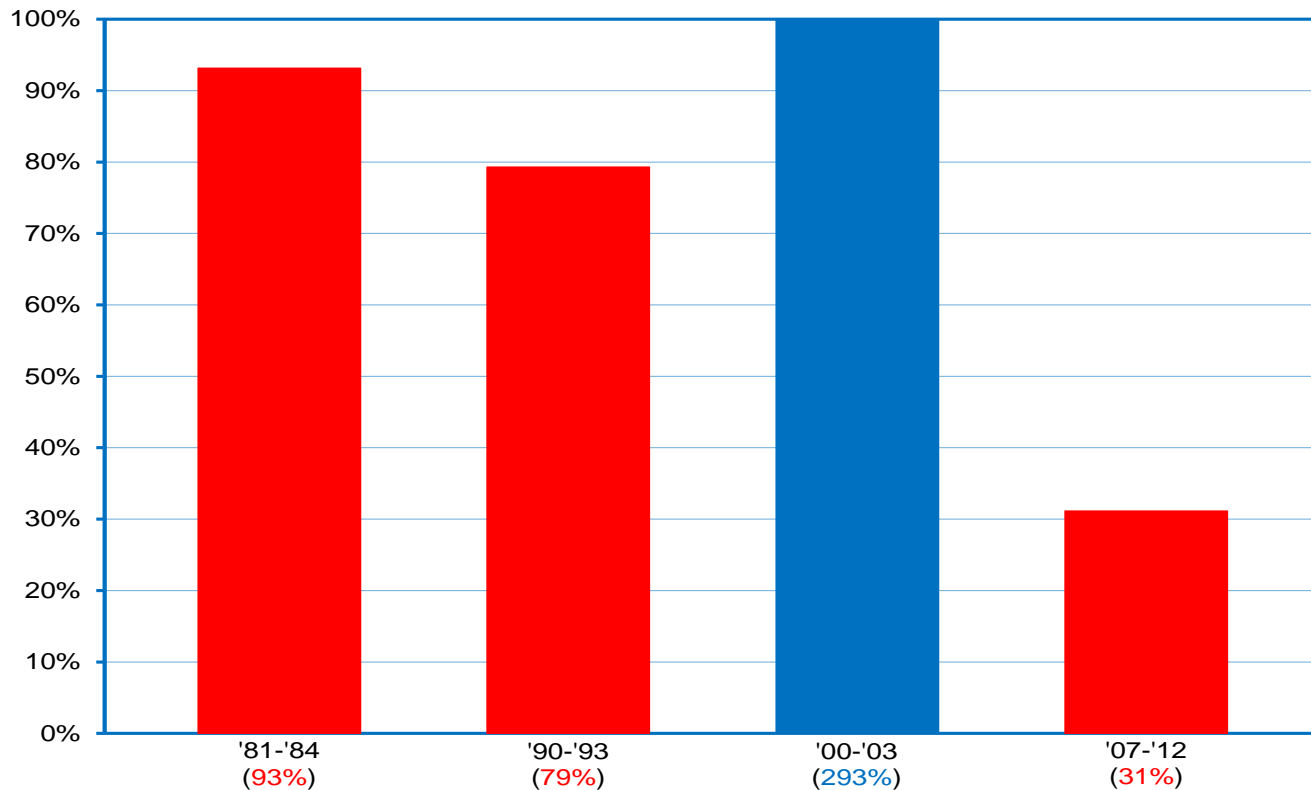
Claims Activity Relative to the Employment Base Approaching Historical Lows

initial claims for unemployment insurance per 1,000 jobs



UI Trust Fund Rebounds; More Improvement Required to Withstand Any Future Downturn

portion of outlays in past 4 recessions potentially covered by current balance





State Employment (SA)

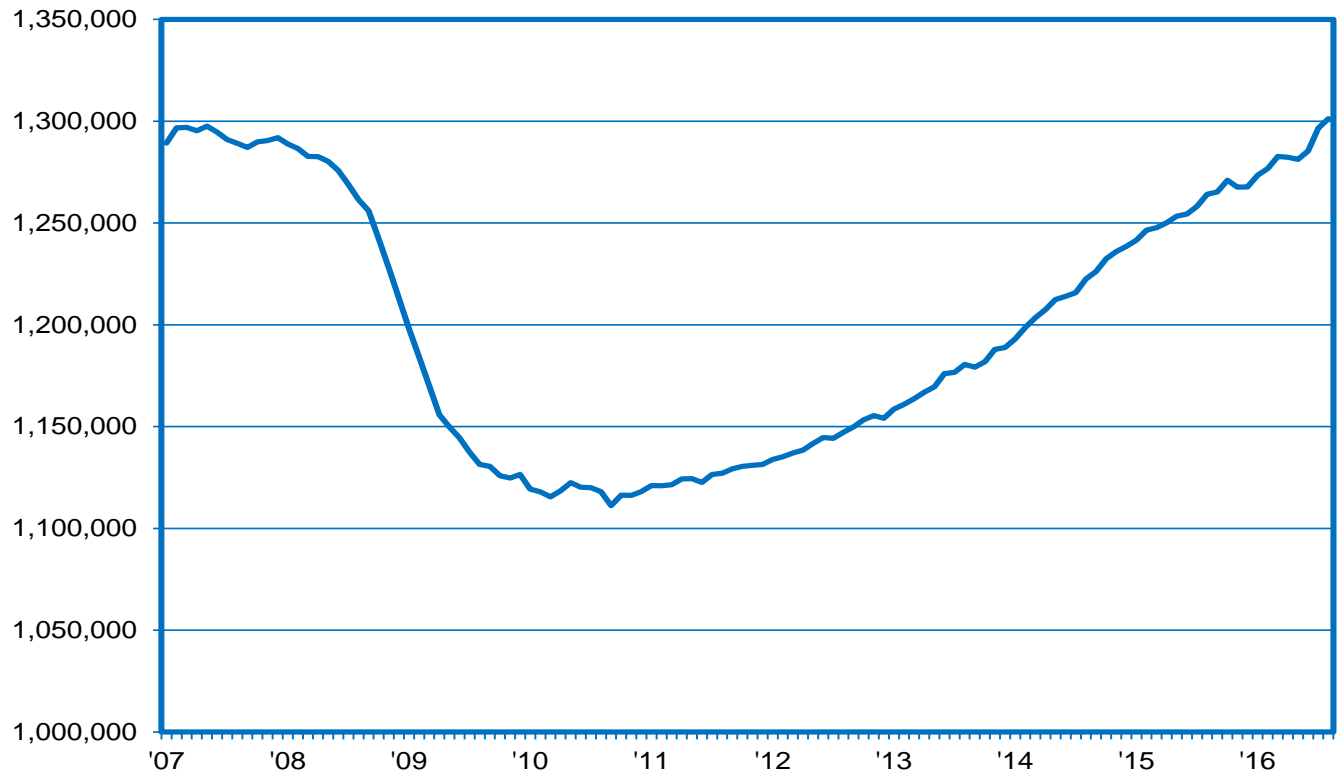
- ❑ Non-Farm Job Levels Up 37,200 Relative to a Year Ago in August
 - ❑ 68 consecutive months of year-over-year gains
 - ❑ 2.9% gain compares to 1.7% in the nation
 - ❑ growth looks to be strengthening of late...strongest in nearly a year
- ❑ Up 4,800 Over the Month
 - ❑ 1,600 (NSA²) jobs were expected to be added based upon historical trends, but 6,400 new jobs were actually realized, resulting in the seasonally adjusted gain

²not seasonally adjusted



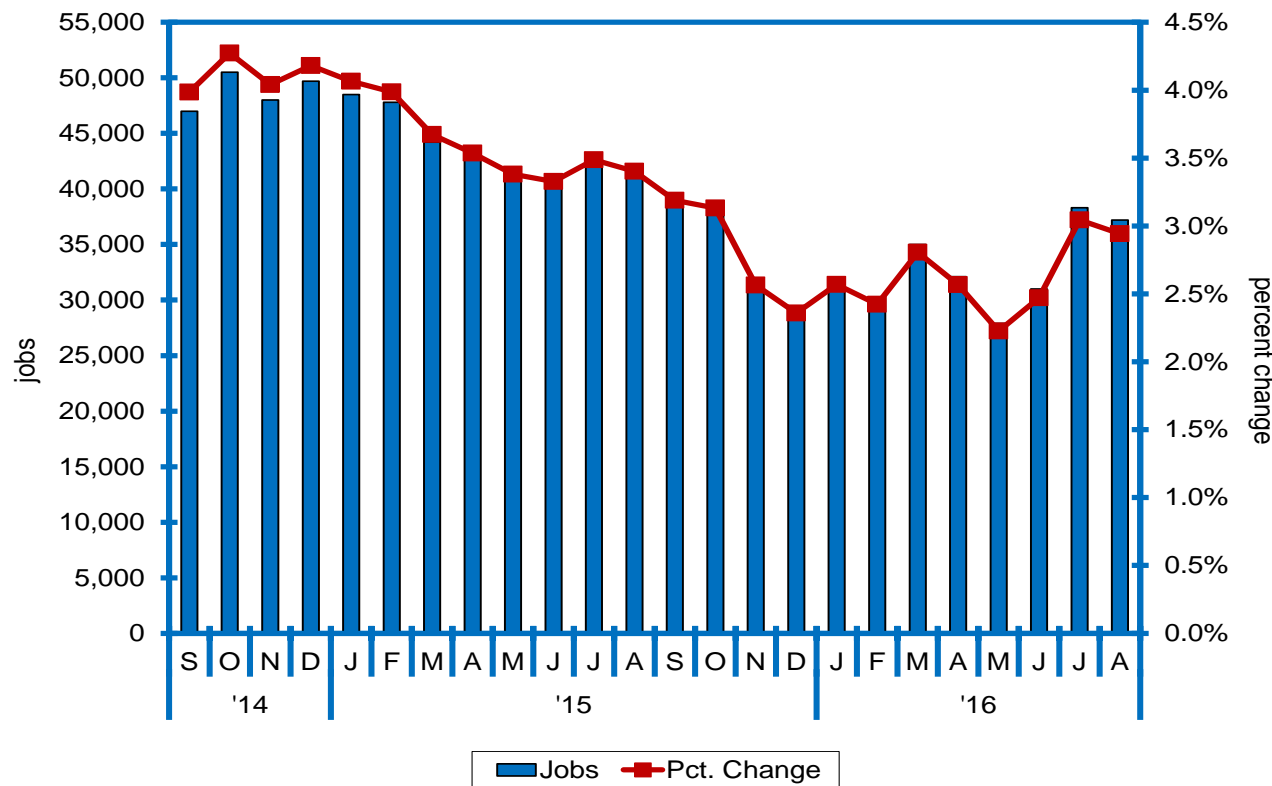
Jobs Surge in Past Few Months; Stand 37K+ Above Year Ago

nonfarm jobs in Nevada (SA)



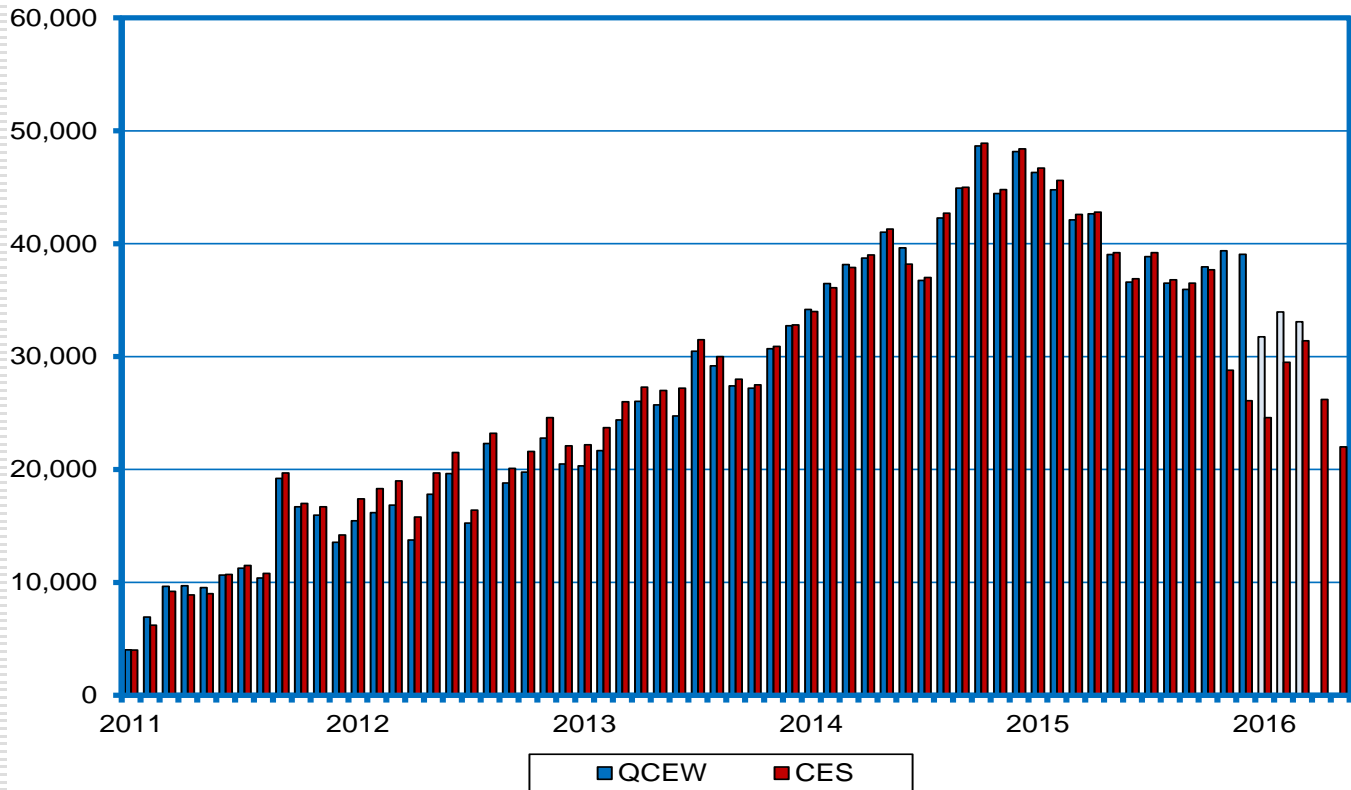
Job Growth at Strongest Pace in Nearly a Year

job growth (SA; year-over-year)



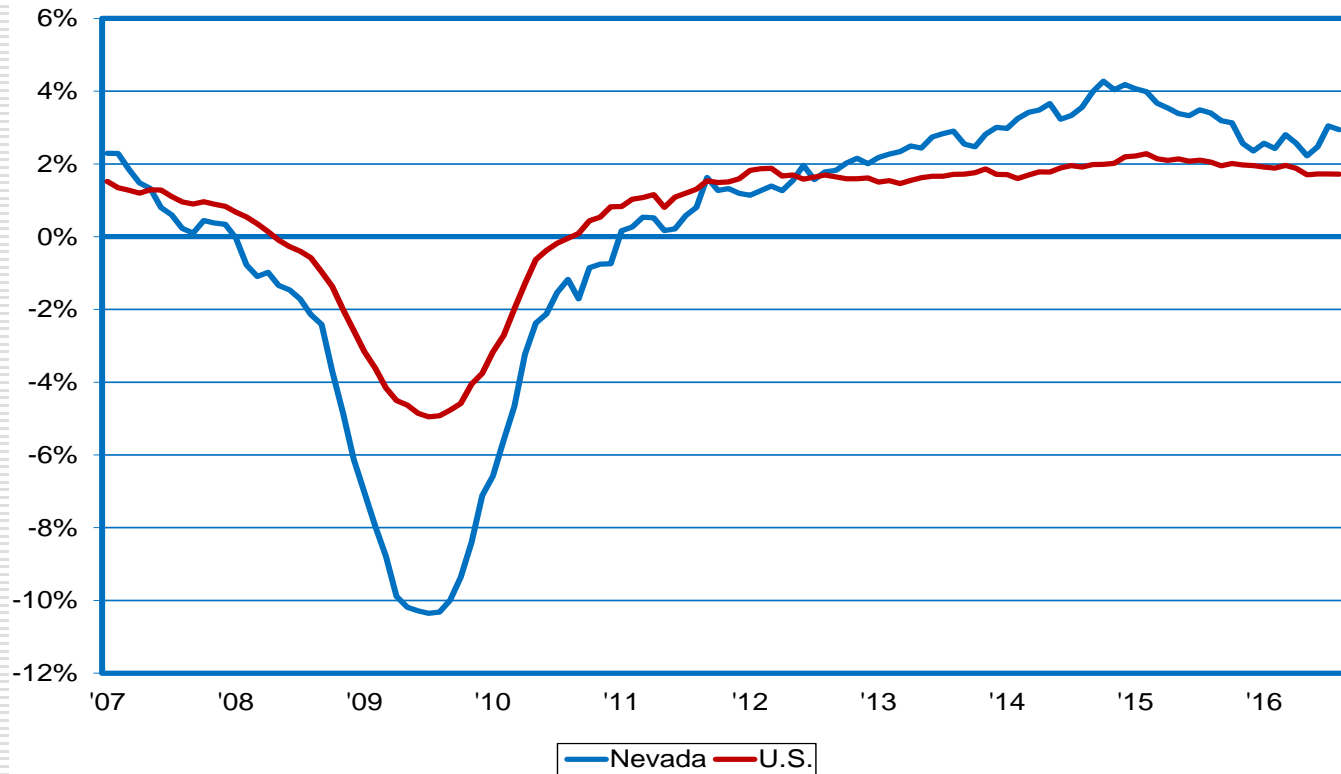
Likely Upward Revision in Monthly Job Estimates at Year-End

year-over-year growth in QCEW (complete count) vs. CES (monthly estimate)



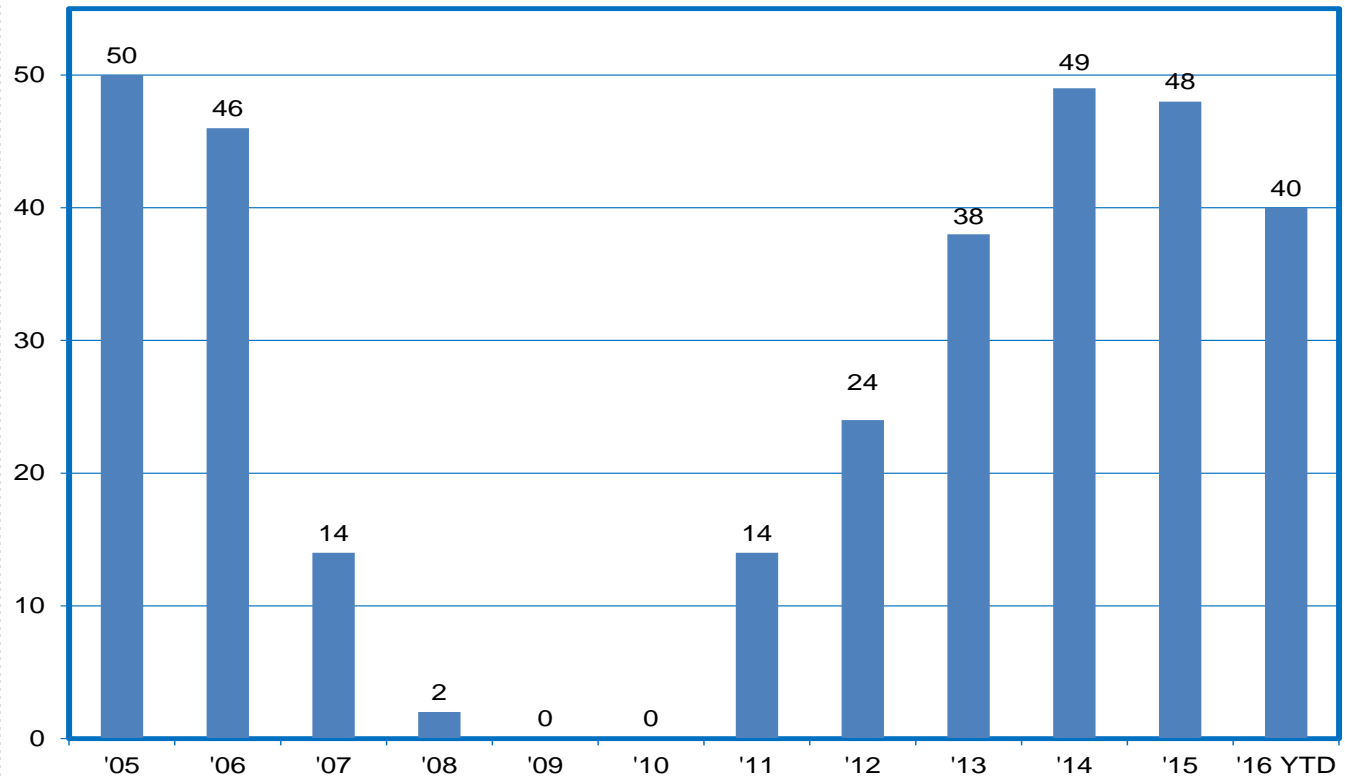
Nevada Job Growth Exceeds Nation in 49 Straight Months; 2.9% vs. 1.7% in August

job growth (year-over-year)



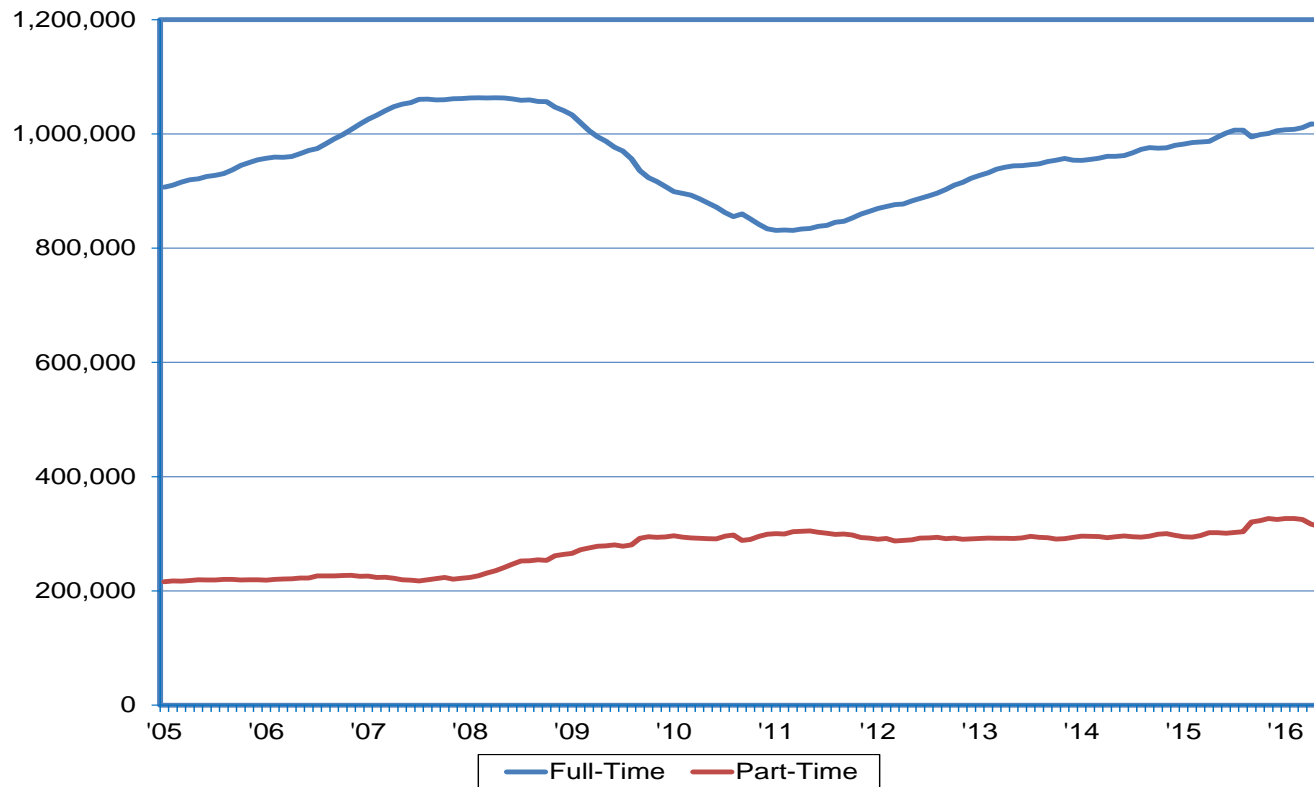
Silver State Job Growth Stronger than in 40 Other States in IQ

job growth rankings (# of states with slower private sector job growth than NV)



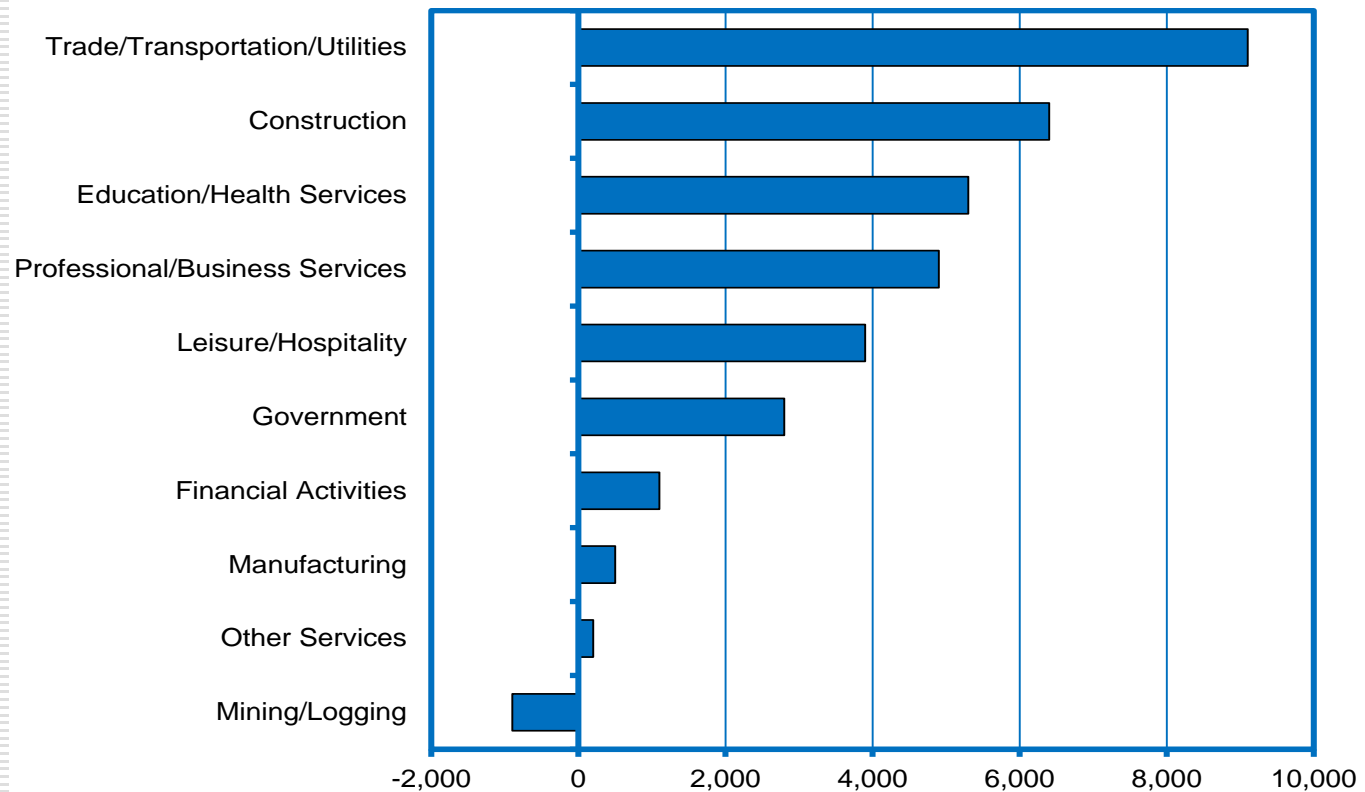
Full-Time Employment Trending Up; Part-Time Holding Steady

FT vs. PT employment; (12-month moving average)



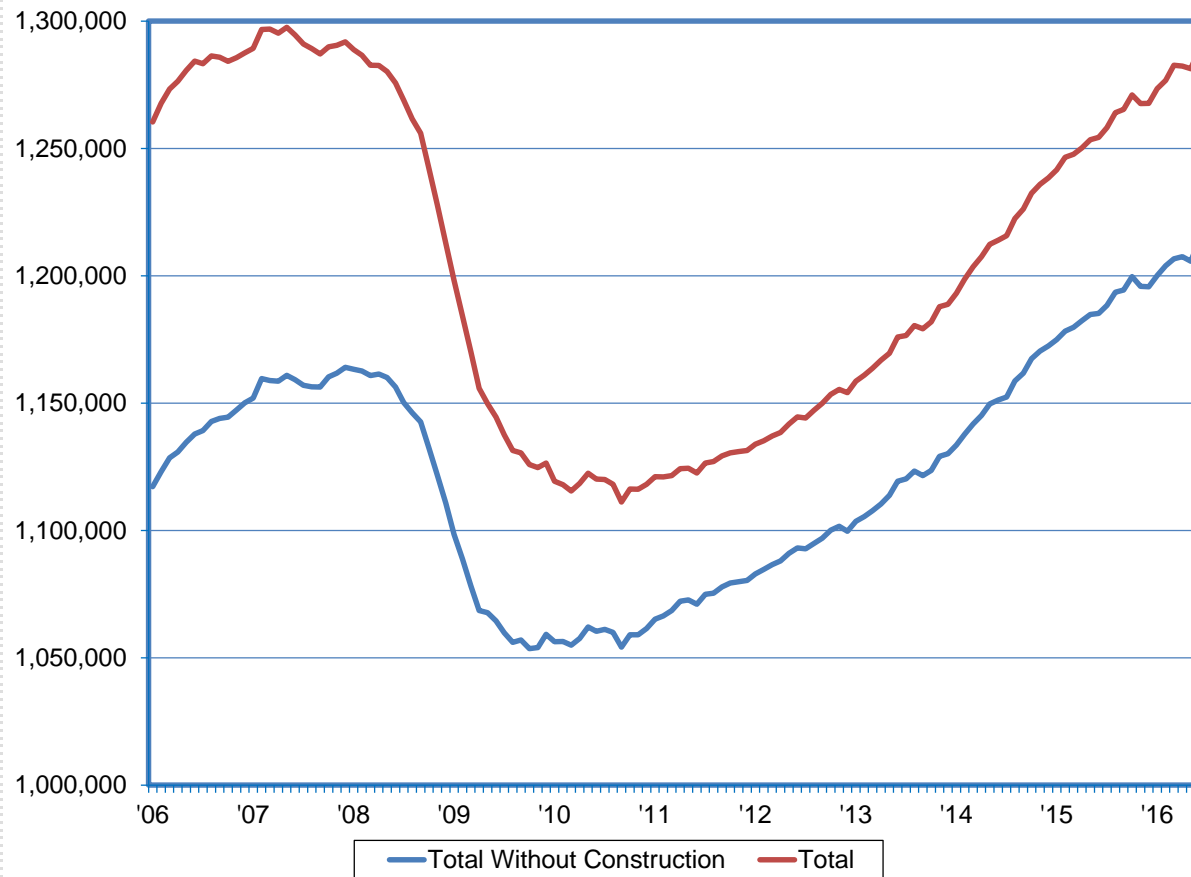
Trade/Transportation, Construction, Healthcare, and PBS Lead the Way

YTD job growth by supersector (year-over-year)



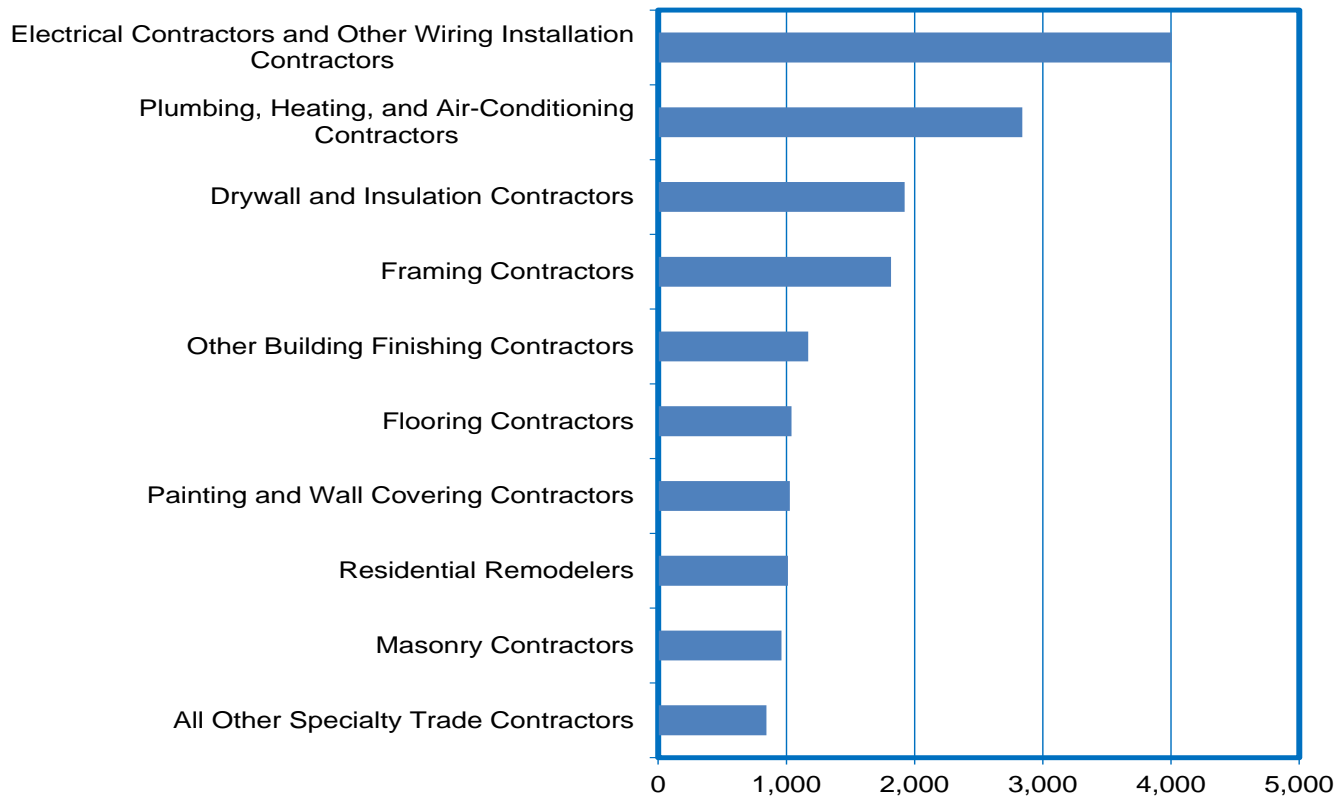
Total Employment Levels Approach Peak; At Record High When Construction is Excluded

Nevada jobs with and without construction



Construction Industries Have Increased Payrolls by About 25,000 Since 2012

2012-2016 construction employment gains



Construction Establishment Closings on the Decline; At Historical Low

construction establishment closings (SA)



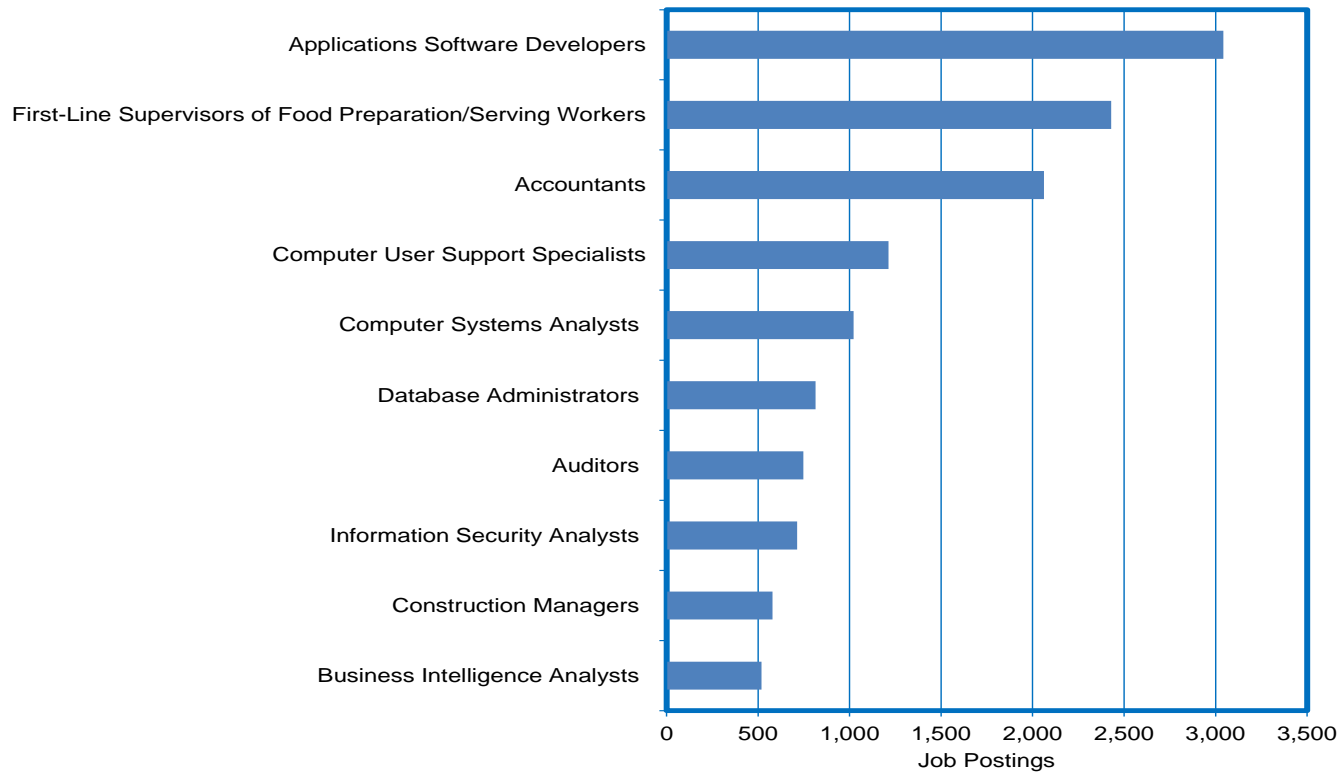
Job Losses from Construction Closings off Significantly from Recession Highs

job losses from construction establishment closings (SA)



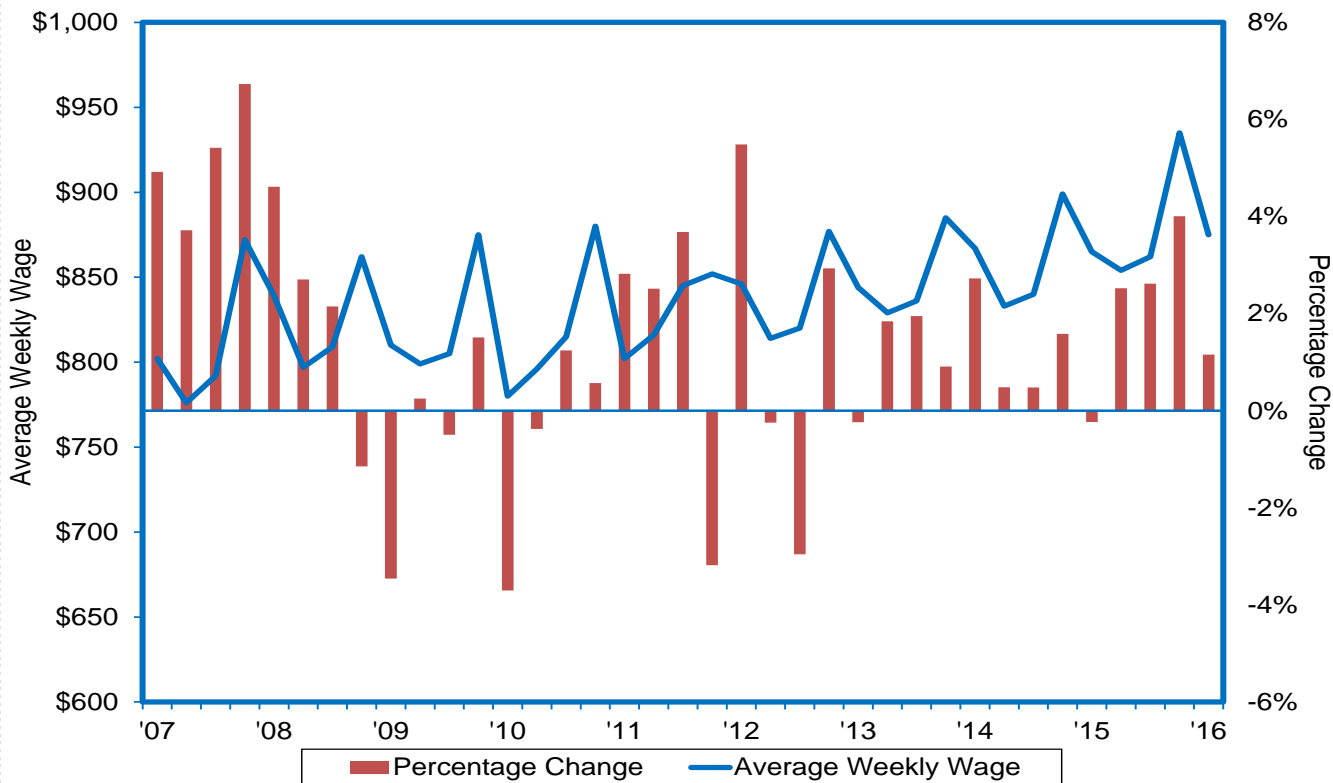
High Demand for STEM Workers; Software Developers Lead the Way in Job Postings

Nevada STEM job postings



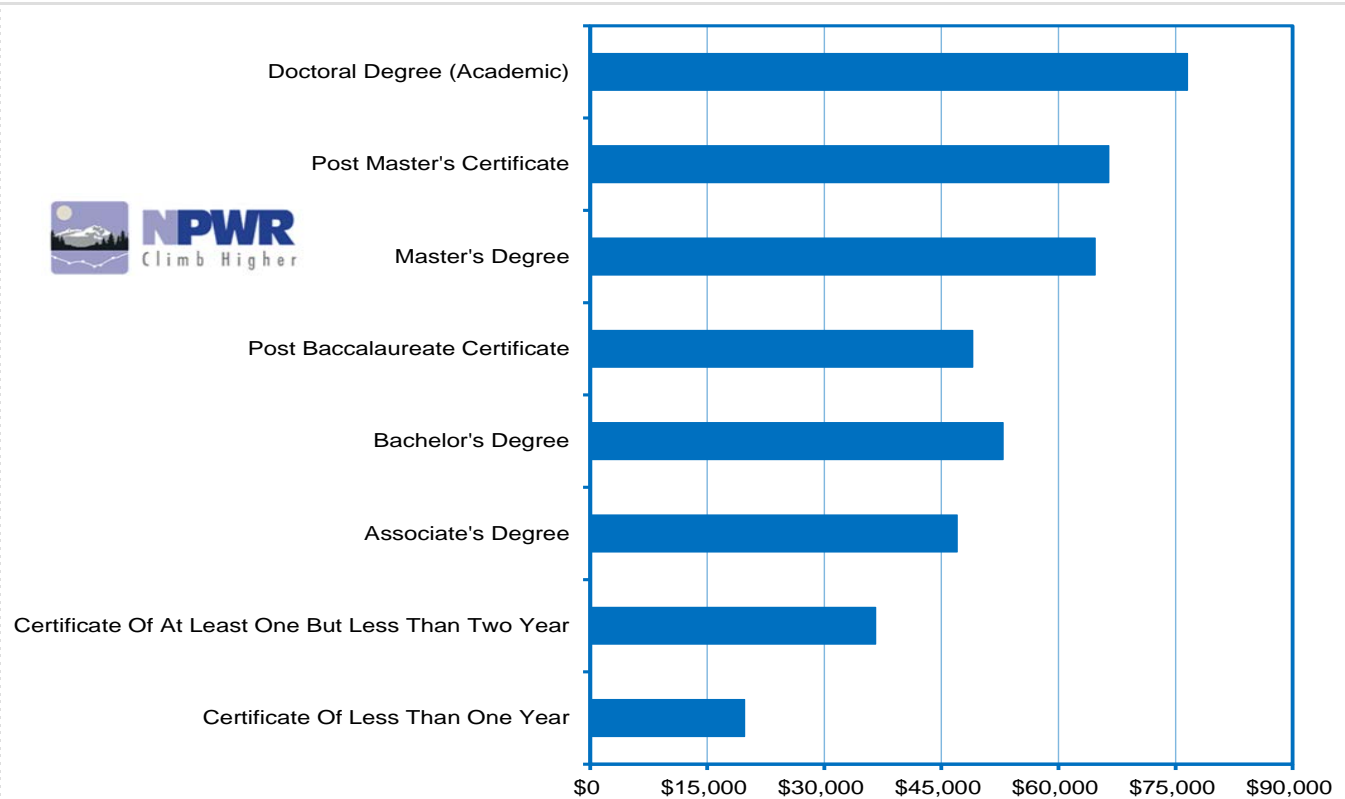
Nevada Wages at \$875/Week in 2016:IQ; A Record-High for the Qtr.; Up 1.2% Over 2015

Nevada average weekly wages



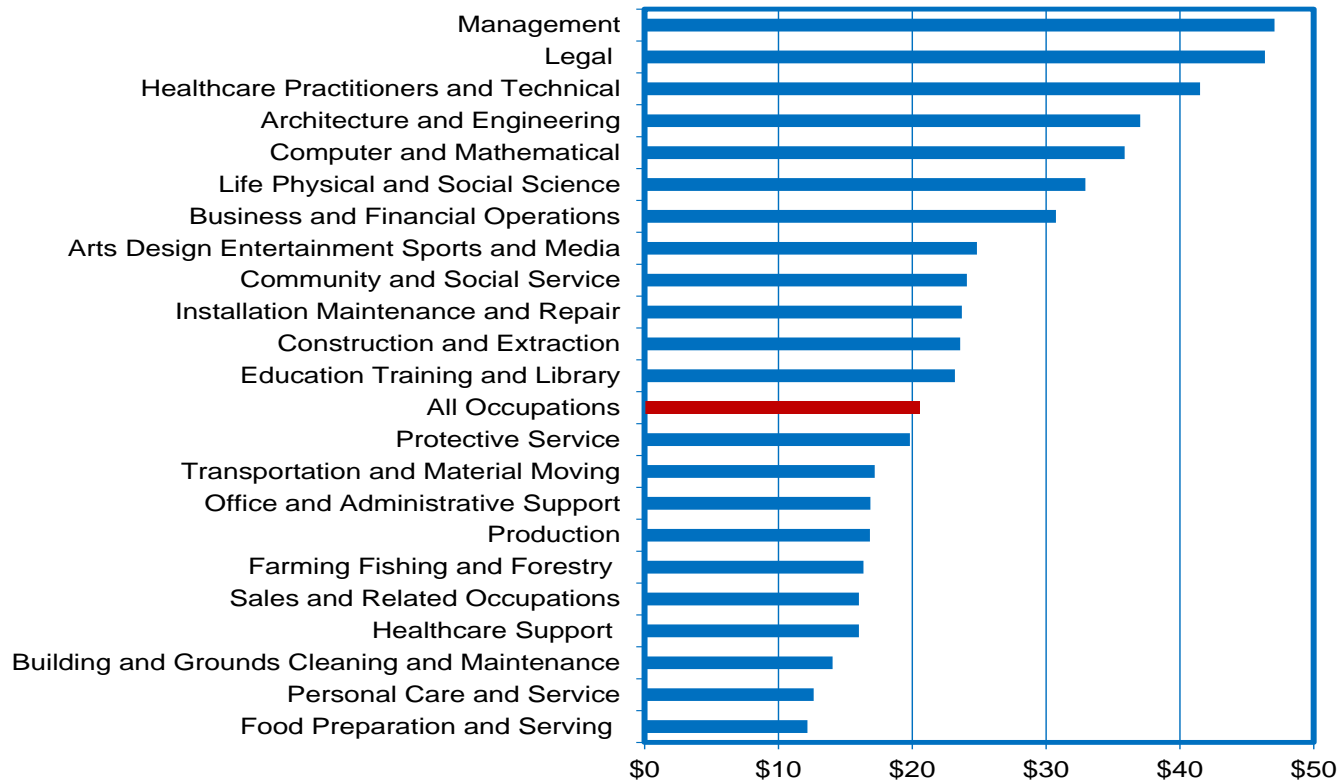
Wages for NSHE Grads/Completers Working in Nevada Rise with Educational Attainment

Average Annual Wages; NPWR Data System



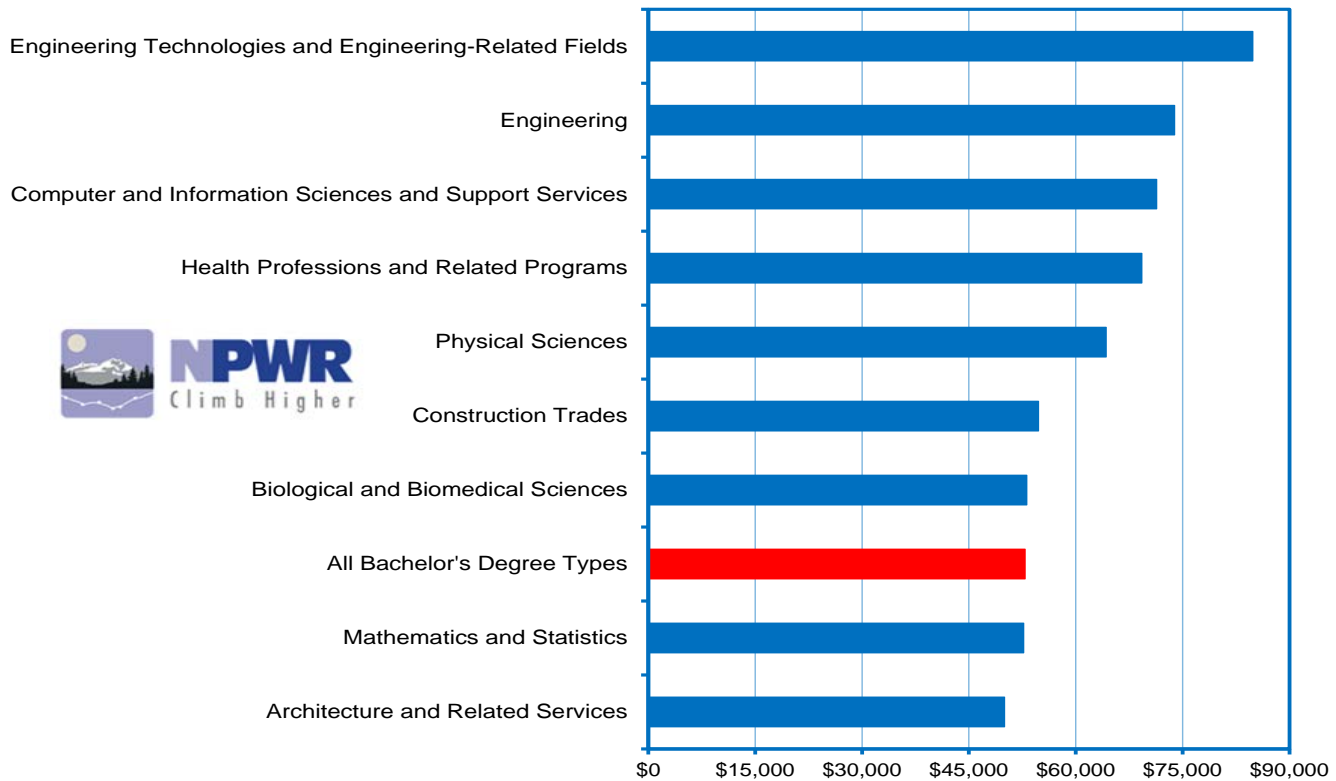
Three Occupations Pay Higher than \$40/Hr; Three Pay Lower than \$15; Avg.=\$20.58

2015 Average Hourly Wages by Occupational Group



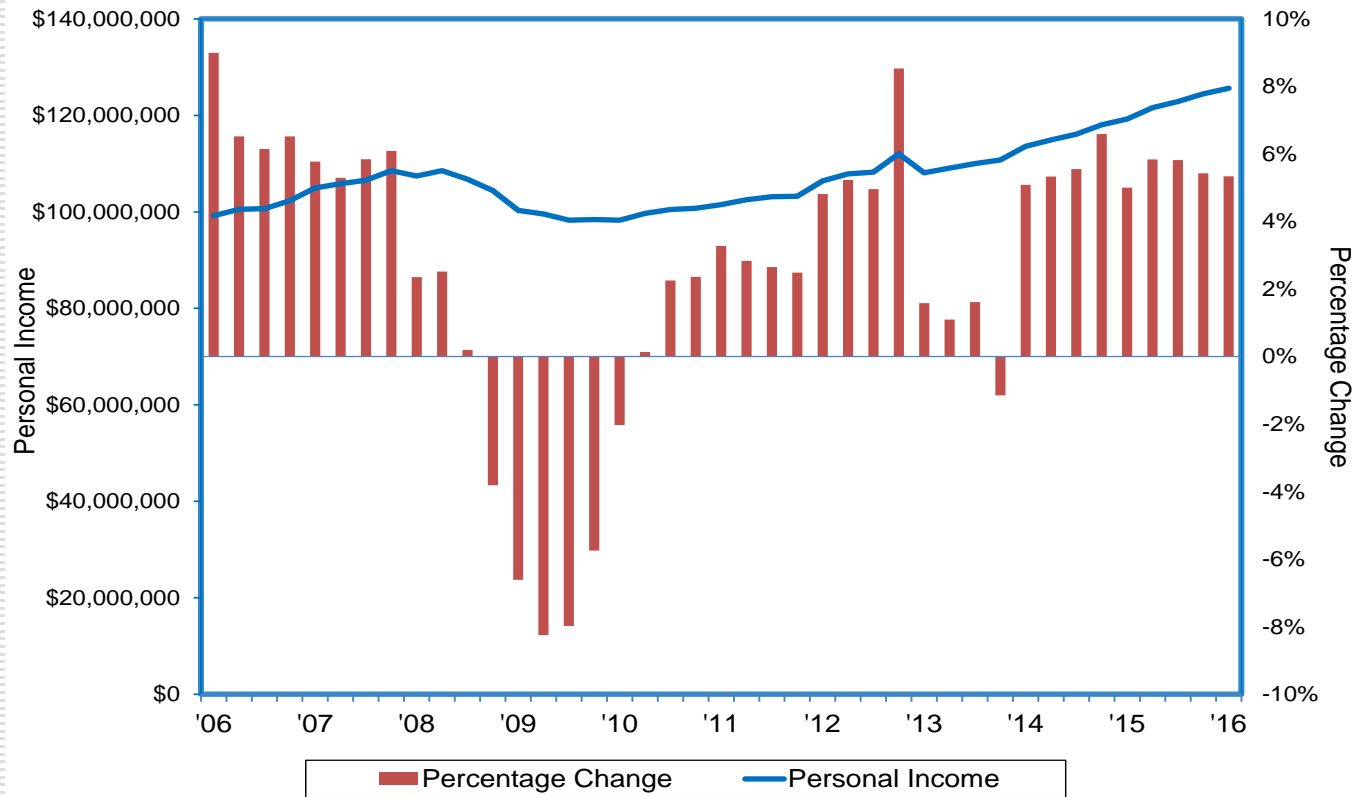
Earnings for NSHE STEM-Related Bachelors Degree Holders > Non-STEM Grads

average annual wages; NPWR Data System



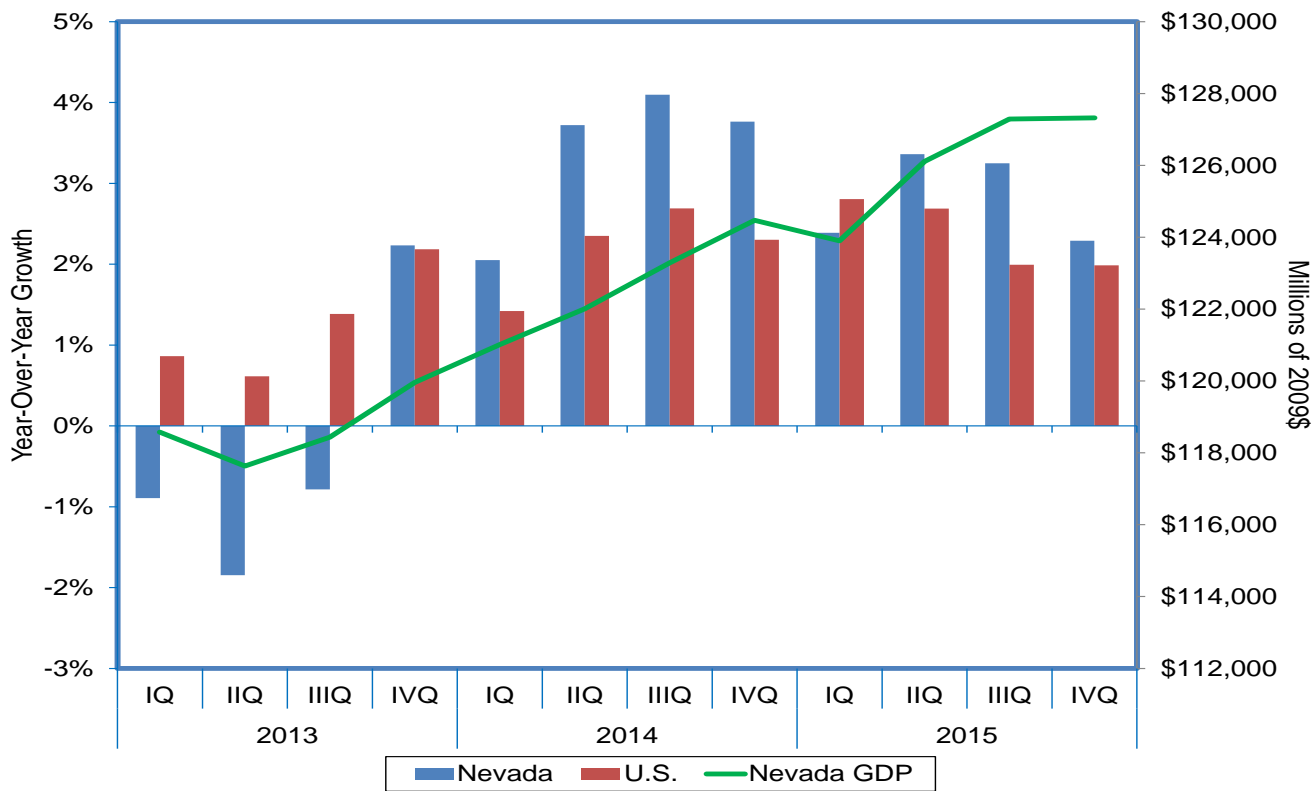
Personal Income Growth Hovering in the Mid-Single Digits in the Silver State

Nevada personal income



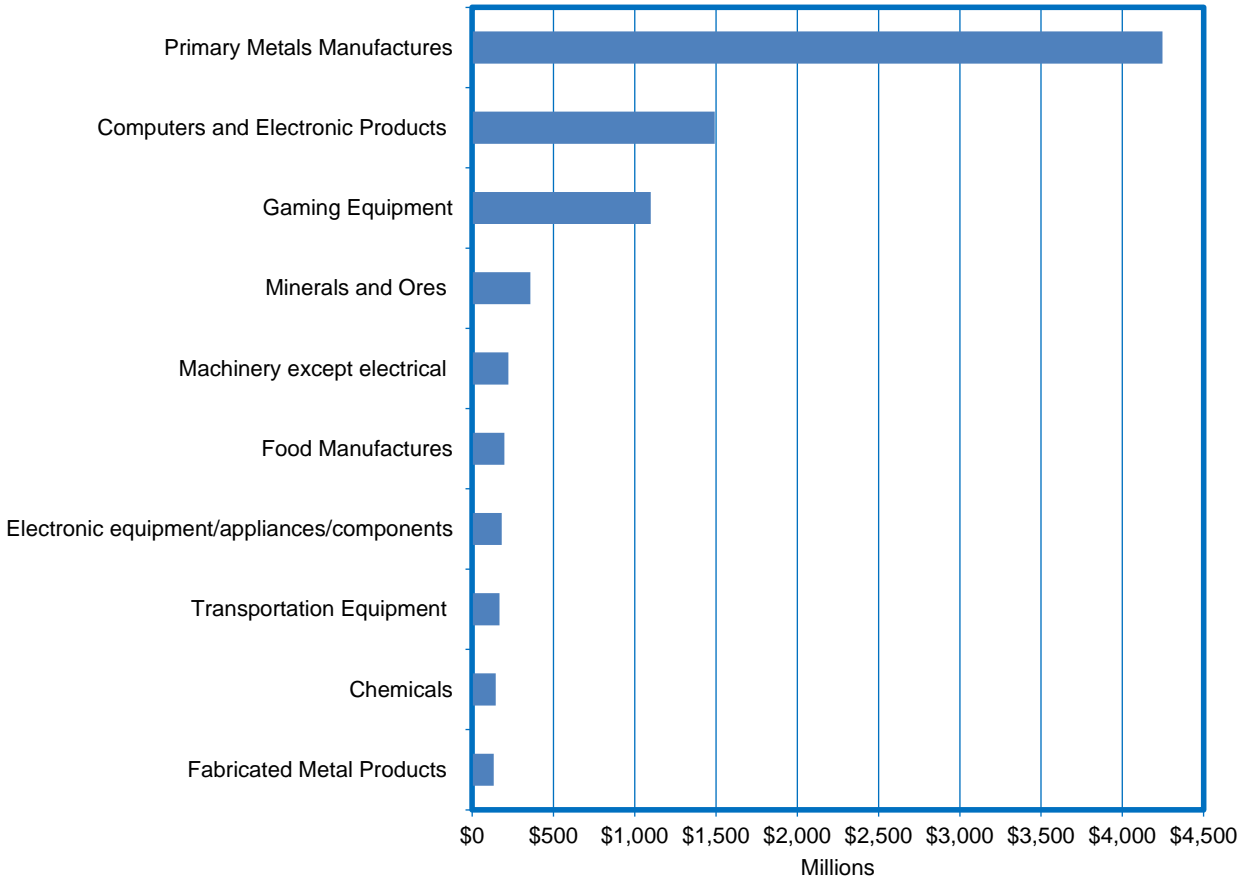
The Silver State's GDP Growth Exceeded the Nation's in Eight of the Past Nine Quarters

gross domestic product



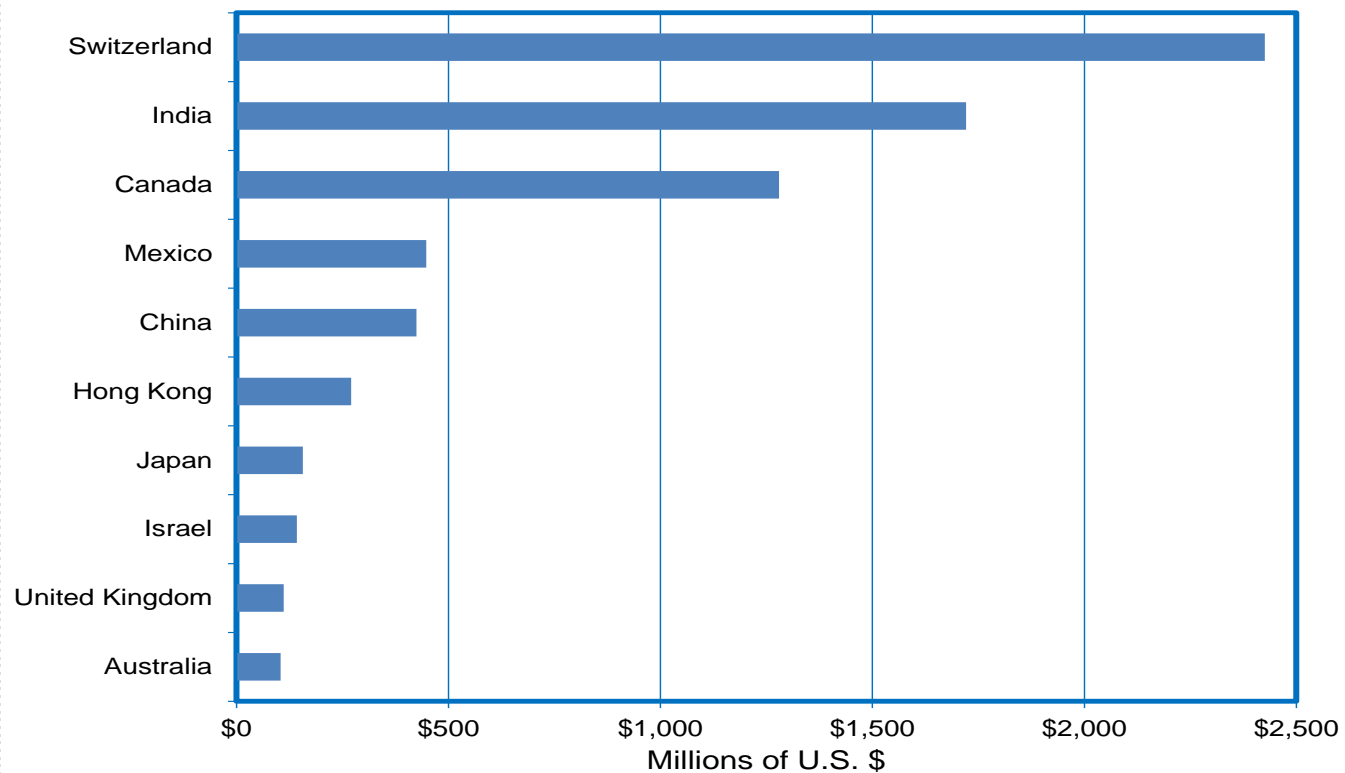
Primary Metal Accounts for Half of Total State Exports (Total=\$8.6B)

2015 Top Nevada Export Products



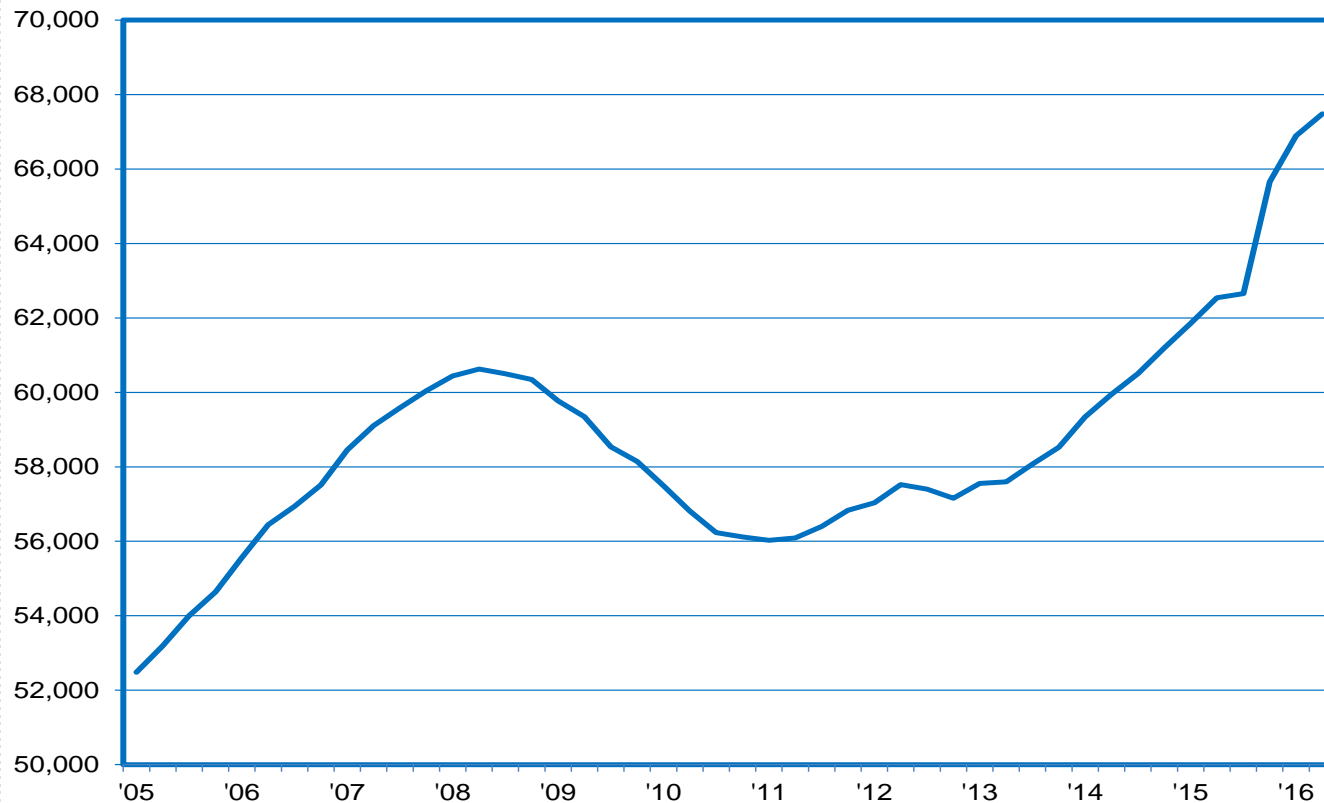
Switzerland is Nevada's Top Trading Partner; \$2.4B in Exports

Nevada's Top Ten Trading Partners; 2015



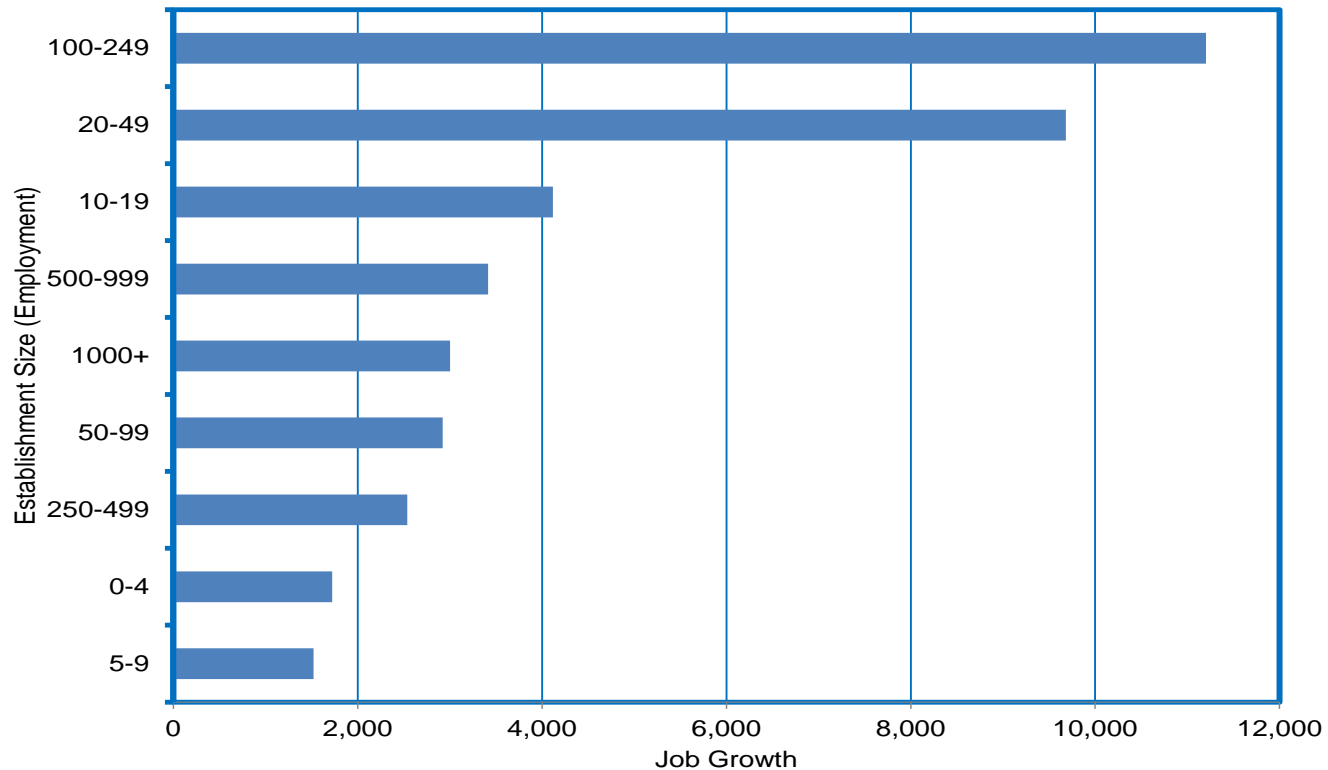
At Nearly 68K, # of Employers at Record High; Up vs. Yr.-Ago in 20 Straight Qtrs.

number of Nevada employers



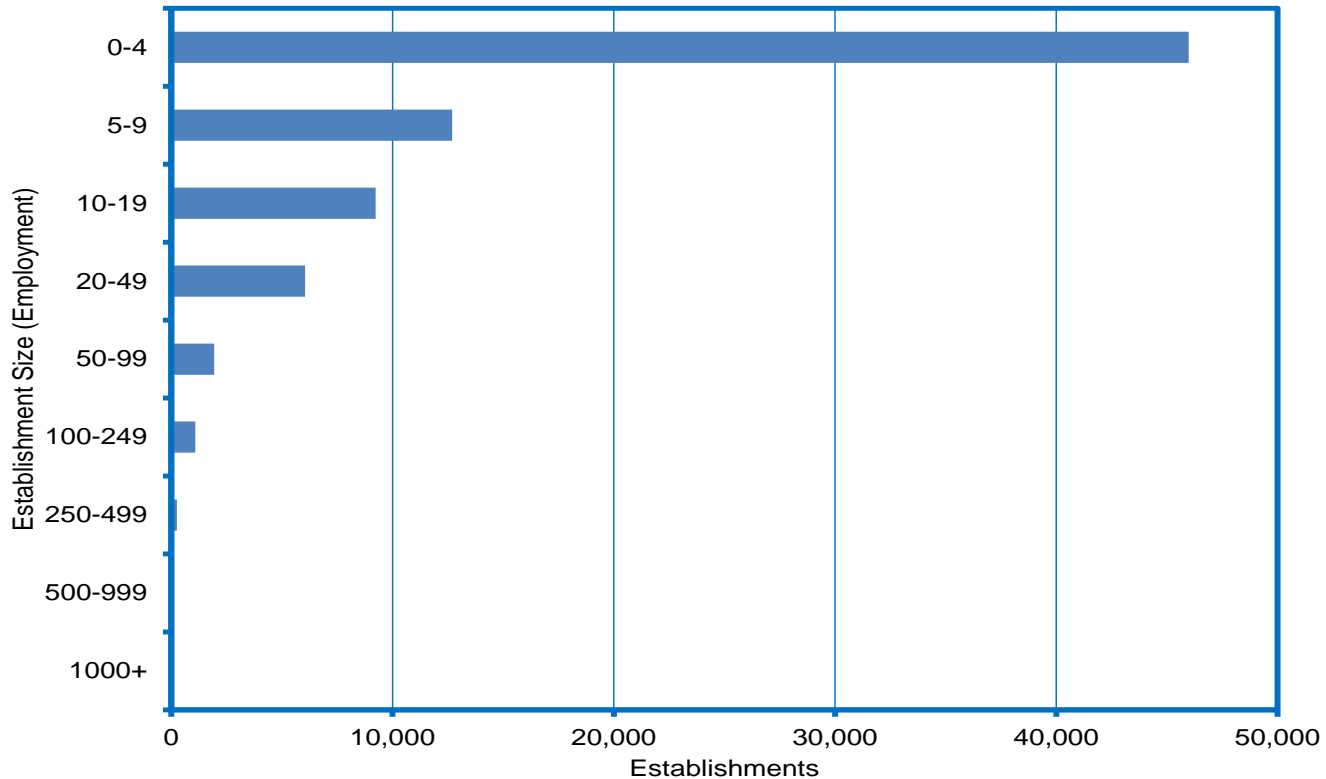
Job Gains Across all Size Groups; Est. With < 100 Workers add 20,000 Jobs in 2015

2014-2015 job growth by establishment size



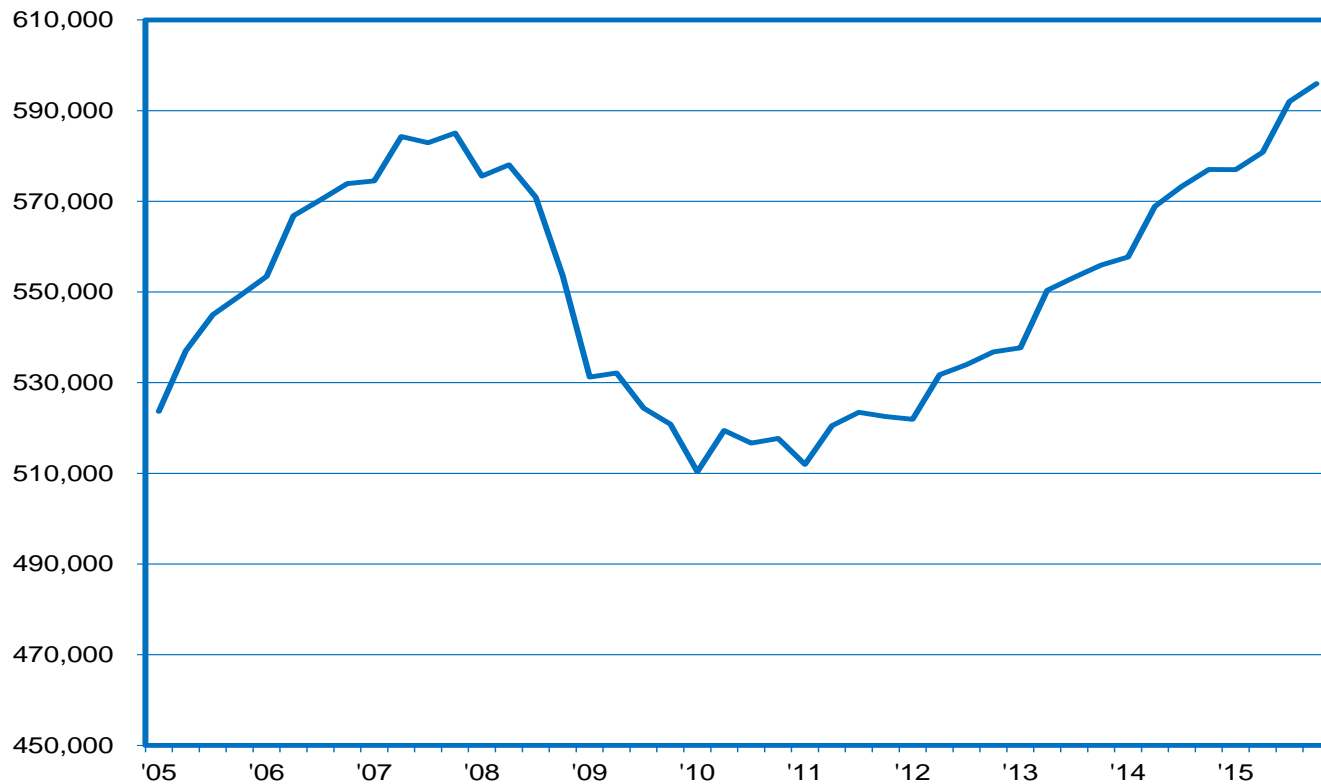
Small Business Accounts for 98% of Nevada's 77K Private Sector Worksites

number of establishments by employment size



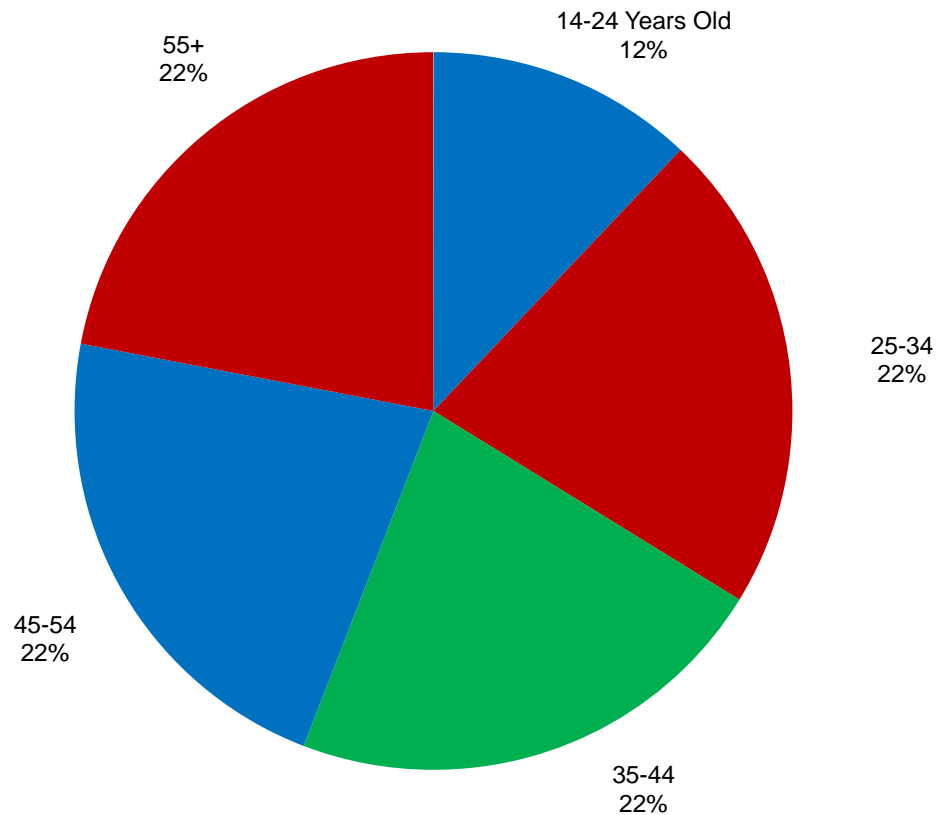
Small Biz Jobs at All-Time High; Gains Recorded in Each of Past 20 Quarters

Employment in Establishments With Less Than 100 Workers



44% of Nevada's Workforce is at Least 45 Years Old; 39% a Decade Ago

2015:IIIQ Nevada workforce by age



For Additional Information, Please Contact:

Nevada Department of Employment, Training and Rehabilitation
Research and Analysis Bureau

Bill Anderson
Chief Economist
wdanderson@nvdetr.org

Christopher Robison
Supervising Economist
c-robison@nvdetr.org

(775) 684-0450

<http://www.nevadaworkforce.com>

follow us on Twitter @nvlabormarket

