

RESEARCH NOTES



Research & Analysis
Bureau

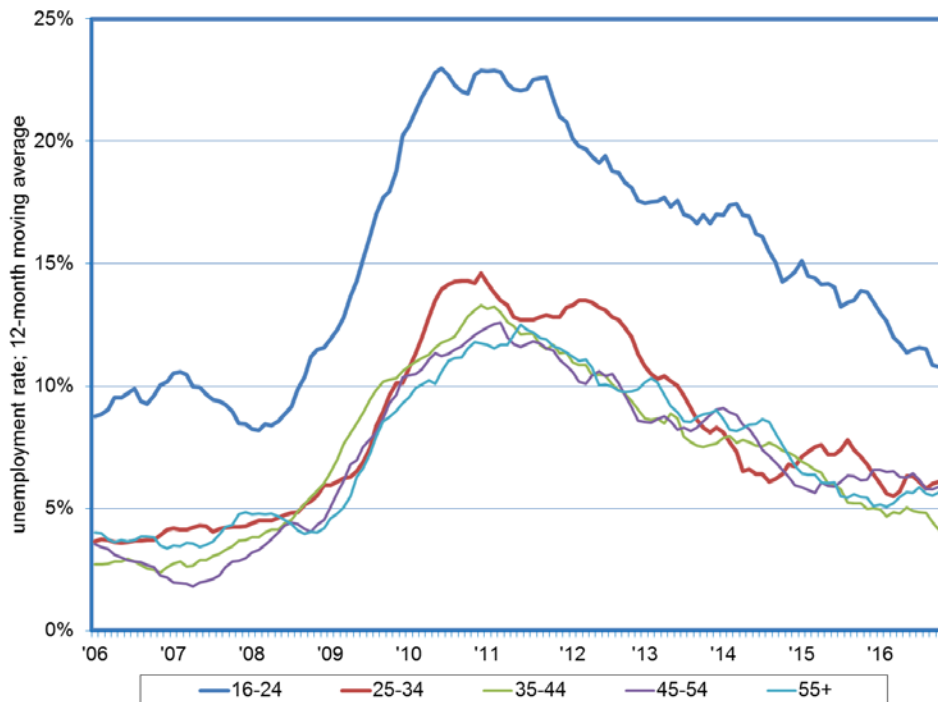
Nevada's Premier Source of Workforce & Economic Information and Analysis



Unemployment Rate by Age
Dionny McDonnell, Economist

Note: 2016:81
December 5, 2016

Unemployment Rate for Teens and Young Adults Tends to be Higher than Other Age Groups



- Information from the monthly Current Population Survey (CPS), sponsored by the Census Bureau and the Bureau of Labor Statistics, allows for the analysis of the unemployment rate across various age groups in the Silver State.
- The unemployment rate tends to be higher for the 16-24 year old group, which includes teens and young adults. Before the recession, the unemployment rate for this age group averaged 9.5 percent (expressed as a 12-month moving average), this was about six percentage points higher compared to other age cohorts.
- Teens and young adults were the most affected by the downturn. The unemployment rate for this group peaked at 23 percent during the recession, roughly ten points higher than that for other age cohorts.
- As the recovery unfolded, the unemployment rate for all groups started to decrease. In November, teens and young adults have an unemployment rate of 10.5 percent, which is around five percentage points higher than the other age groups.