

RESEARCH NOTES



Research & Analysis
Bureau

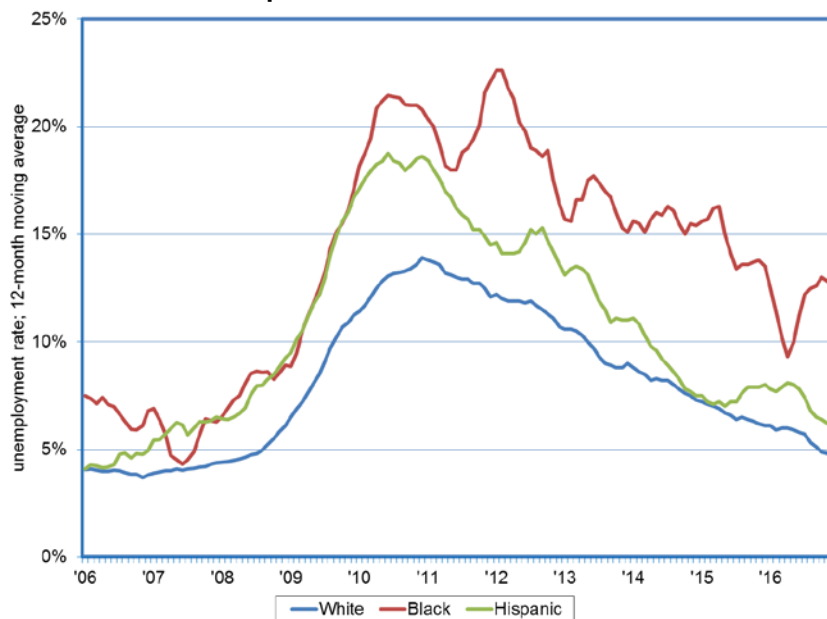
Nevada's Premier Source of Workforce & Economic Information and Analysis



Unemployment Rate by Race
Dionny McDonnell, Economist

Note: 2017:09
January 17, 2017

Unemployment Rate in Nevada Varies Across Race; Rate for Blacks and Hispanics Exceeds That for Whites



- Information from the monthly Current Population Survey (CPS), sponsored by the Census Bureau and the Bureau of Labor Statistics, allows for the analysis of the unemployment rate in the Silver State by race.
- The unemployment rate in Nevada varies across race. Prior to the recession, the unemployment rate for Blacks was higher at 7.4 percent, compared to that for Whites at four percent. The rate for people of Hispanic origin was 4.2 percent.
- During the recession the unemployment rate for Blacks peaked at 22.6 percent, while the rate for Whites reached its peak at 13.9 percent. The rate for Hispanics peaked at 18.7 percent.
- As the recovery unfolded the unemployment rates decreased for all racial groups. In December 2016, Blacks have an unemployment rate of 13.3 percent, while the rate for Whites is 4.7 percent. The rate for Hispanics stands at 6.1 percent.
- According to the Bureau of Labor Statistics, labor market differences across racial groups are associated with many factors, not all of which are measurable. These factors include variations across the groups in educational attainment, the occupations and industries in which they work, and the geographic areas in which the groups are concentrated (including urban or rural settings).