

RESEARCH NOTES



Research & Analysis
Bureau

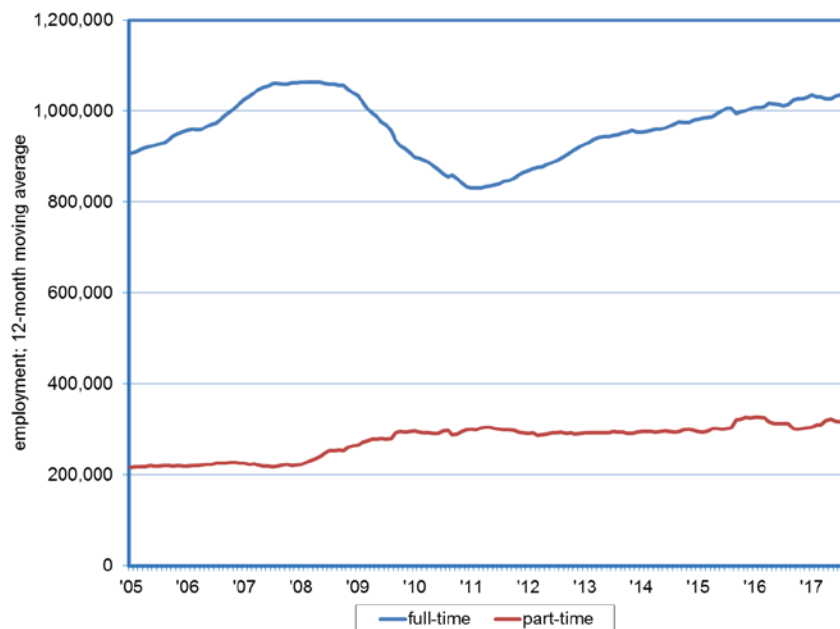
Nevada's Premier Source of Workforce & Economic Information and Analysis



Full-Time and Part-Time Employment
Dionny McDonnell, Economist

Note: 2017:113
September 1, 2017

Full-Time Employment Strong Since the Recovery Began; Part-Time Holding Relatively Steady



- Prior to the economic downturn, the number of Nevadans employed full-time topped out at nearly 1.1 million, measured on a 12-month moving average, based upon results from the Current Population Survey (CPS). At this peak level, full-time employment represented about 83% of the total. Silver State residents employed part-time numbered approximately 225,000.
- During the recession, full-time employment fell to about 831,000, for a cyclical decline of more than 230,000. As would be expected in times of economic uncertainty, part-time employment actually rose, resulting in a gain of nearly 90,000 positions between mid-2006 and mid-2011, totaling over 300,000 jobs.
- Since the economic trough, full-time employment has risen – in August 2017, employees with full-time status totaled 1,036,000, a gain of 205,000 from recessionary lows. The number of Nevadans employed on a part-time basis, on the other hand, is holding relatively steady, coming in at approximately 320,000 in August.
- While there is still room from improvement, Nevada employment gains have been concentrated in full-time positions during the economy recovery. Currently, 76.4 percent of total employment is full-time, while part-time positions account for 23.6 percent.