

# RESEARCH NOTES



Research & Analysis  
Bureau

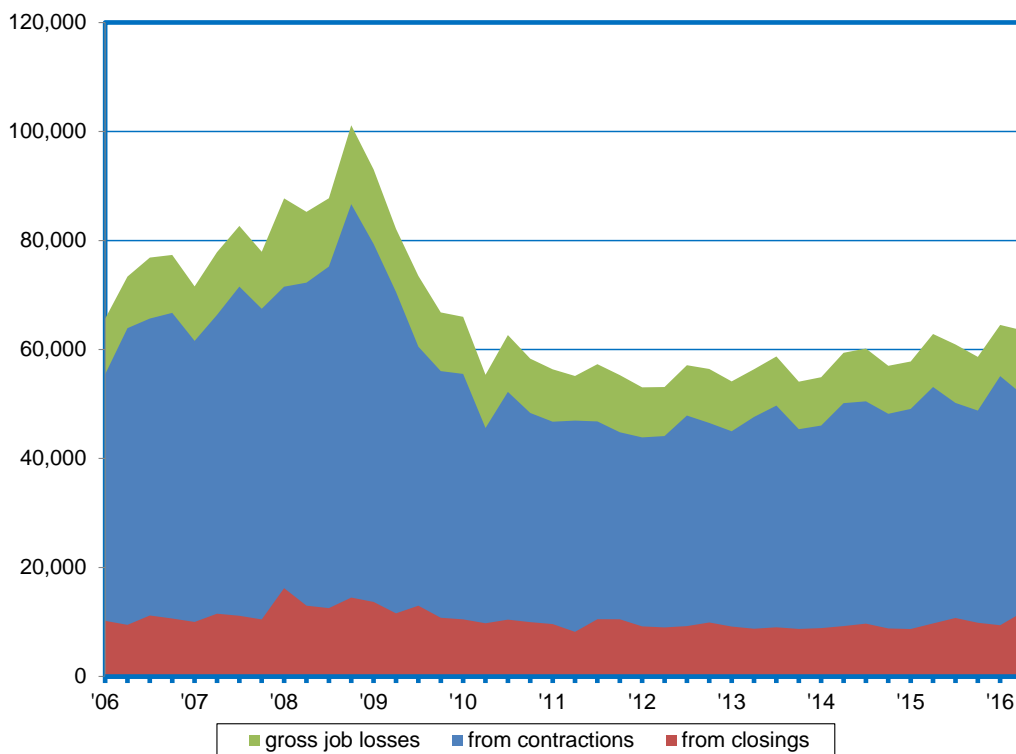
Nevada's Premier Source of Workforce & Economic Information and Analysis



Job Losses From Contractions and Closings  
Marianne Segurson, Economist

Note: 2017:58  
May 4, 2017

## Existing Private Sector Business Establishment Contractions Drive Gross Job Losses; Closings Account for Relatively Small Share



- Among other things, the Bureau of Labor Statistics' Business Employment Dynamics Program allows us to look at the components of gross job losses—from contractions at existing establishments and from business closings.
- In the third quarter of 2016, gross job losses at contracting private sector establishments totaled 50,700. This is down markedly from recessionary highs.
- At the same time, gross job losses at closing establishments totaled 11,100 in 2016:IIIQ.
- In fact, over time, the vast majority of gross job losses can be attributable to contractions, as opposed to closings. For instance, in the years leading up to the recession and through the downturn, job losses attributable to existing business contractions rose from less than 50,000 to well above 70,000. Since then, they have decreased to the 50,000-mark, as the recovery has unfolded.
- Gross job losses from closings fluctuate in a much narrower range, around 10,000 per quarter.