

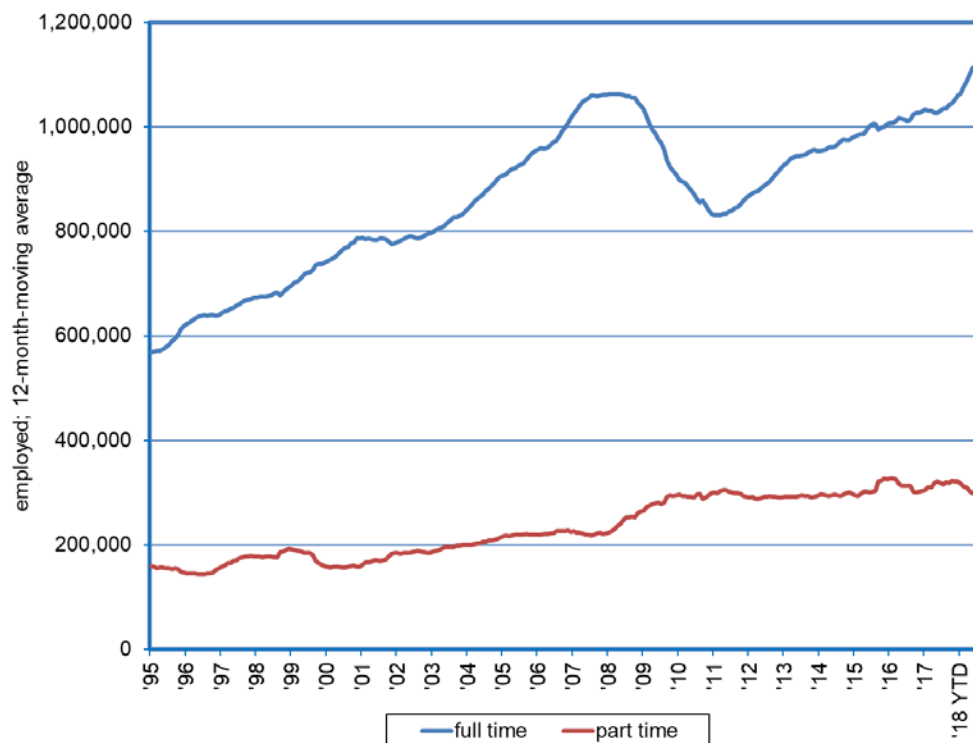
# Research Notes



Full Time and Part Time Employment  
Dionny McDonnell, Economist

Note: 2018:112  
September 20, 2018

## Full Time Employment in Nevada Reaches a New All Time High



- Information from the monthly Current Population Survey (CPS), sponsored by the Census Bureau and the Bureau of Labor Statistics, allows for the analysis of full time and part time employment in Nevada. Full time workers include those persons who usually work 35 hours or more during the week. Part time workers include those who typically work less than 35 hours during the week.
- Based upon results from the Current Population Survey (CPS) available since 1994, the number of Nevadans employed full-time topped out at 1,063,280 in April 2008; measured on a 12-month moving average. At this peak level, full-time employment represented 81.9% of the total. Silver State residents employed part-time numbered 235,500.
- By January 2011, full time employment fell to 831,150, for a cyclical decline of more than 232,130 from the peak. Part-time employment rose to 300,420 jobs. This resulted in an increase of 64,920 part time positions over the same period.
- As of August 2018, Nevadans employed full-time totaled 1,128,760 representing a new all time high. This is up from 1,036,030 a year ago. The number of Nevadans employed on a part-time basis, remains relatively steady, coming in at 308,170 in August. Part-time is down from 320,100 last year.
- Nevada employment gains have been concentrated in full-time positions. Currently, 78.6 percent of total employment is full-time, while part-time positions account for 21.4 percent.