

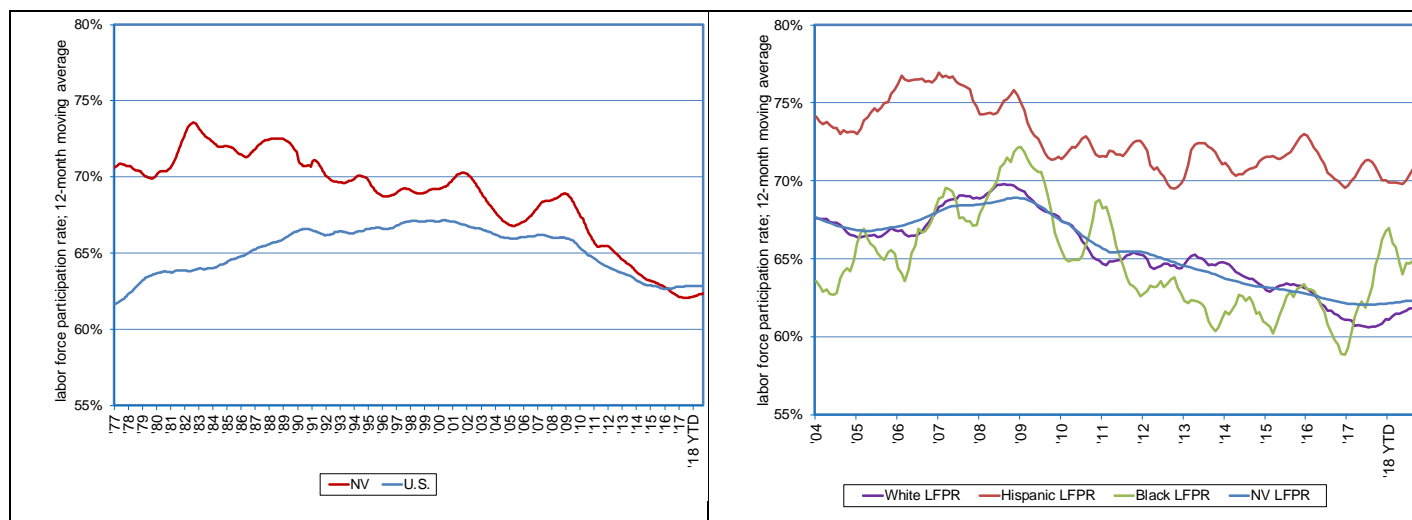
Research Notes



Labor Force Participation Rate by Race
Dionny McDonnell, Economist

Note: 2018:118
October 17, 2018

Labor Force Participation Rate Varies Across Race Groups



- The Labor Force Participation Rate (LFPR) is a simple measure: the ratio of the labor force relative to the population (16 years and older). It measures the extent to which Nevadans are participating in the workforce, either as workers or job seekers.
- The monthly Current Population Survey (CPS), sponsored by the Census Bureau and the Bureau of Labor Statistics, provides LFPR estimates dating back to 1976. In the Silver State, the LFPR topped out at 73.6% in mid-1982; measured on a 12-month moving average. During the same period, the U.S. rate stood at 63.8%. In fact, from 1977 to early 2016 the Silver State's LFPR was higher than the nation's, which amounts to nearly four decades. Although Nevada's LFPR dropped below the nation's in early-2016, it has remained within one percentage point of difference.
- As of September 2018, the LFPR in Nevada stands at 62.4% compare to 62.8% nationwide. This September is up from 62.1% a year ago.
- Information about the LFPR by race in the Silver State is available in the CPS estimates dating back to 2003. In 2004, Whites LFPR averaged 66.5% compared to 65% for Blacks. The LFPR for people of Hispanic origin was 73.1%. The LFPR for the State as a whole during this period was 66.9%.
- As of September 2018, the LFPR for Whites stands at 61.8%, the LFPR for Blacks is 65.5%, and the LFPR for Hispanics is 71%.
- CPS estimates show that Hispanics LFPR tends to be higher compare to the that of Whites and Blacks. Despite differences in level, the LFPR for all race groups tend to follow similar trends over time.