

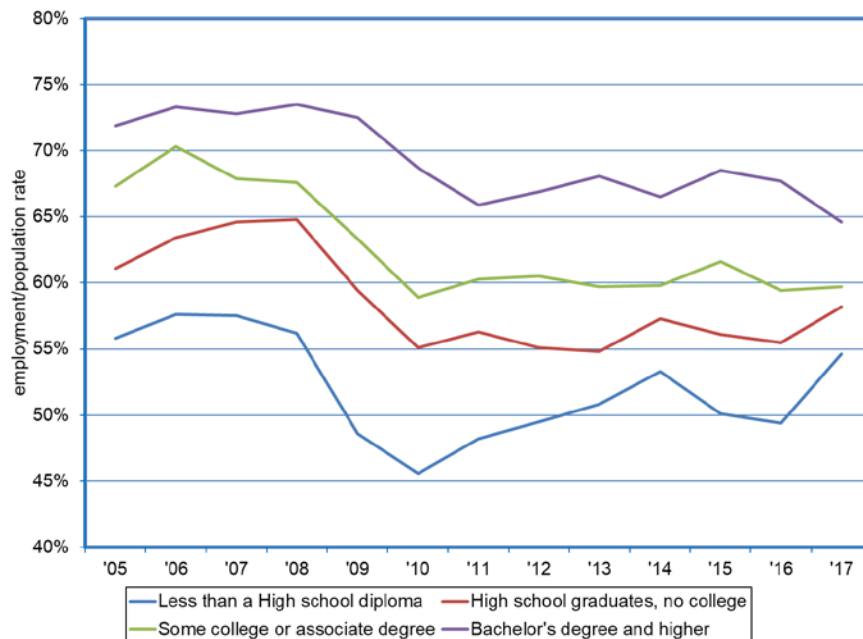
# Research Notes



Employment Population Rate by Educational Attainment  
Dionny McDonnell, Economist

Note: 2018:24  
March 7, 2018

## Nevadans with Higher Education More Likely to Participate in Labor Force Employment Rate for all Educational Levels Still Below Pre-Recession Levels



- Information from the monthly Current Population Survey (CPS), sponsored by the Census Bureau and the Bureau of Labor Statistics, allows us to analyze the employment/population ratio by educational attainment for the population ages 25 and older.
- Nevadans with some college or associate degree and with a bachelor's degree or higher education tend to have a higher employment rate. Before the recession, the employment rate peak averaged 70.3% and 73.5% respectively.
- Nevadans with lower levels of educational attainment have a lower employment rate. In 2006 the employment rate peaked at 57.6% for those with less than a High school diploma. In 2008 High school graduates with no college education rate peaked at 64.8%.
- During the recession, the employment rate for Nevadans with some college or associate degree bottomed at 58.9% in 2010 while those with a bachelor degree or higher education bottomed at 65.9% in 2011.
- In 2010 Nevadans with less than a High school diploma had an employment rate of 45.6%, while the rate for High school graduates with no college bottomed at 55.1%.
- In 2017 the employment rate for people with less than a High school stood at 54.6%, compared to 58.2% for High school graduates, and 59.7% for people some college or associate degree. The employment rate for Nevadans with a Bachelor's degree or higher education stood at 64.6% which is 8.9 percentage points lower from the peak.