

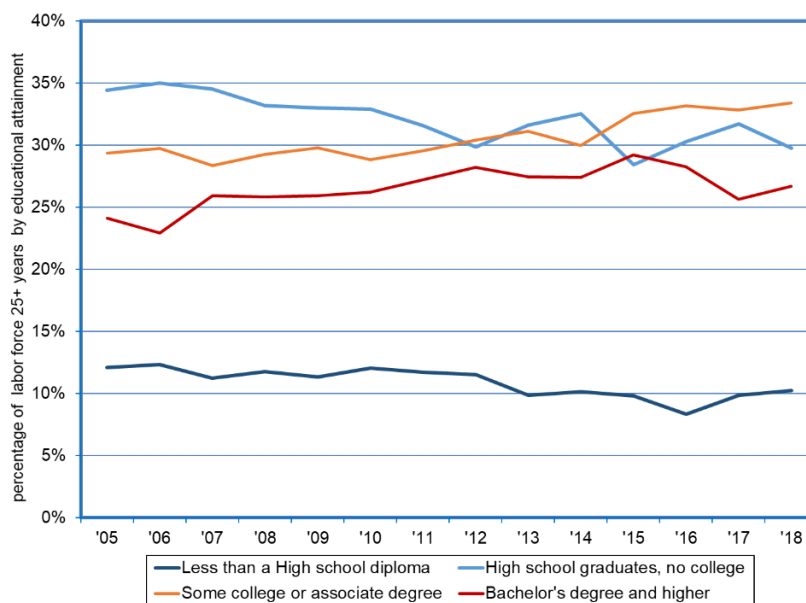
Research Notes



Labor Force by Educational Attainment
Dionny McDonnell, Economist

Note: 2018:97
August 13, 2018

Over Half of Nevada's Labor Force Has at Least Some College Education



- Information from the monthly Current Population Survey (CPS), sponsored by the Census Bureau and the Bureau of Labor Statistics, allows for the analysis of the labor force 25 years and over by educational attainment. Four major categories of educational attainment are considered in this research note: less than High School diploma, High School graduates no college (includes persons with a high school diploma or equivalent), some college or associate degree, and Bachelor's degree and higher (includes persons with bachelor's, master's, professional and doctoral degrees).
- Since 2005 Nevadans in the labor force with less than a High School diploma have remained relatively steady at 11% of total labor force. Those with a High School diploma and no college are trending down, reaching around 32% of total labor force. Nevadans with some college or associate degree are trending up, with 31% of total labor force. People with a Bachelor's degree are also trending up reaching 26% of total labor force.
- On average in 2005, one-third of the labor force in Nevada had a High School diploma and no college education; 29% of the labor force had some college or an associate's degree; 24% had a Bachelor's degree or higher, and 12% had less than a High School diploma.
- From 2005 to 2011, the largest share of the Silver State labor force were High School graduates with no college compared to the other three categories of educational attainment. Since 2015, Nevadans with some college or an associate's degree represent the largest share of the civilian labor force.
- For the year ending in July 2018, two thirds of Nevada's labor force have at least some college or associate degree.
- According to the Bureau of Labor Statistics¹, associate's degrees in an academic program are primarily in the arts and sciences and are transferable to a bachelor's degree program, while associate's degrees in occupational programs prepare graduates for a specific occupation.

¹ Profile of the labor force by educational attainment: Spotlight on Statistics: U.S. Bureau of Labor Statistics.