

Nevada Labor Market Briefing: January 2016

Department of Employment, Training & Rehabilitation

Don Soderberg, Director

Dennis Perea, Deputy Director

Bill Anderson, Chief Economist

Christopher Robison, Supervising Economist

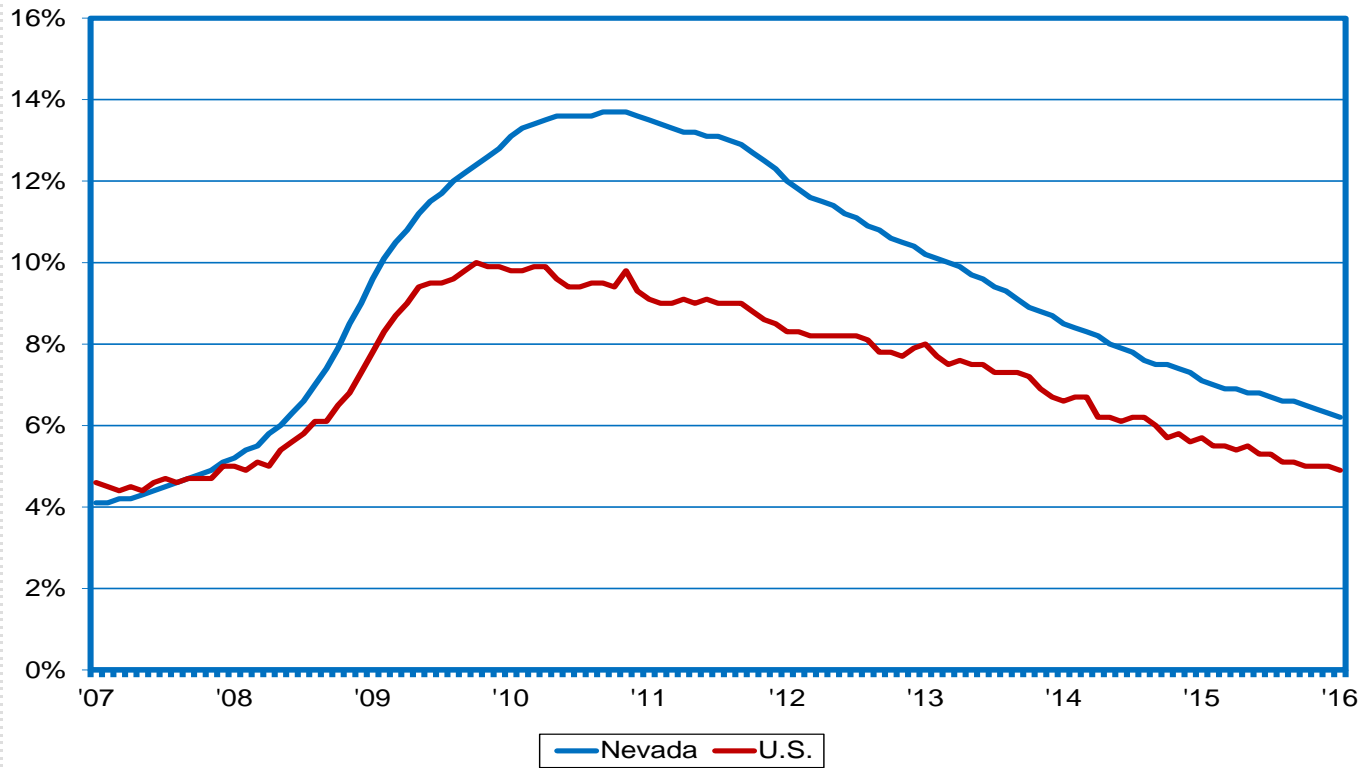
Dionny McDonnell, Economist

Prepared by the Research and Analysis Bureau for Presentation to the
Manufacturing and Logistics Sector Council



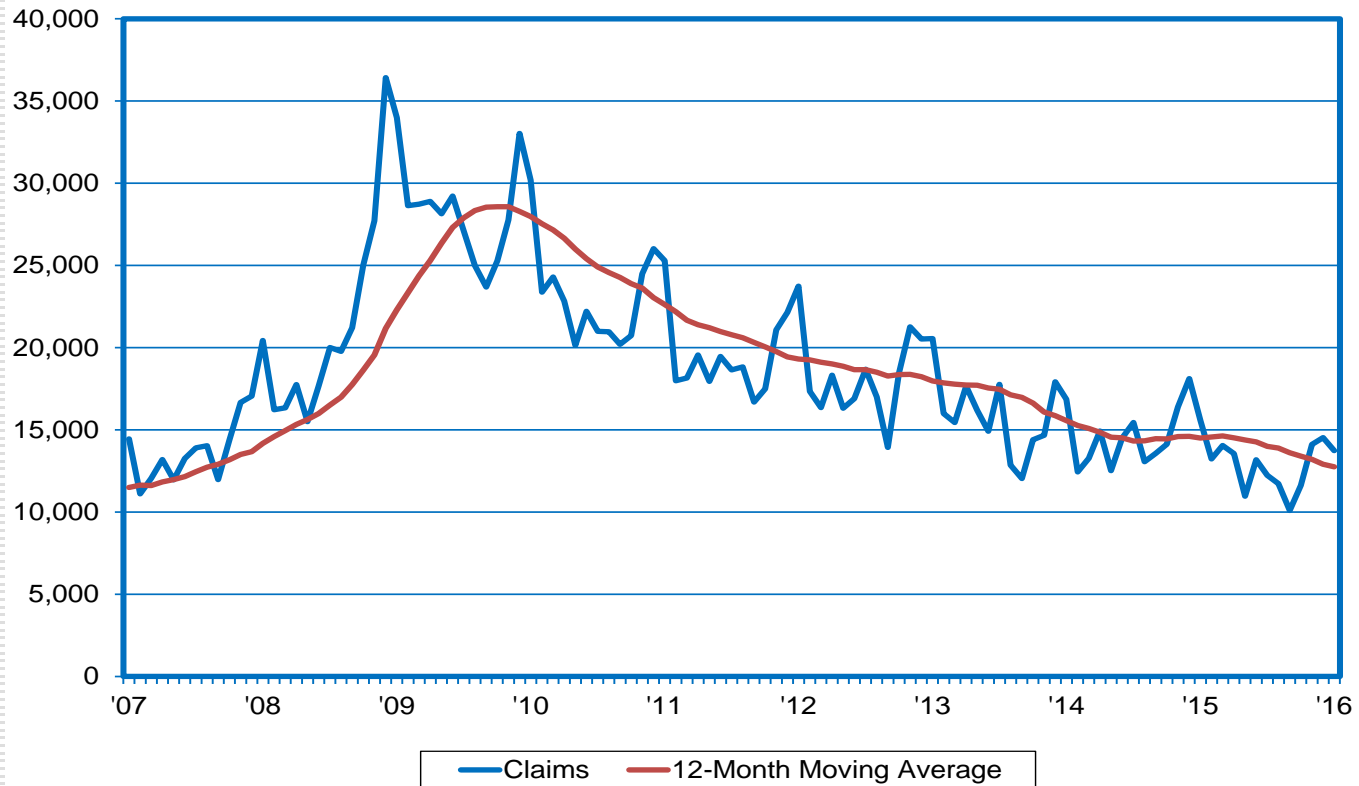
Declined or Held Steady vs. Previous Month Every Month Since Oct. 2010

NV vs. the U.S. Unemployment Rate (SA)



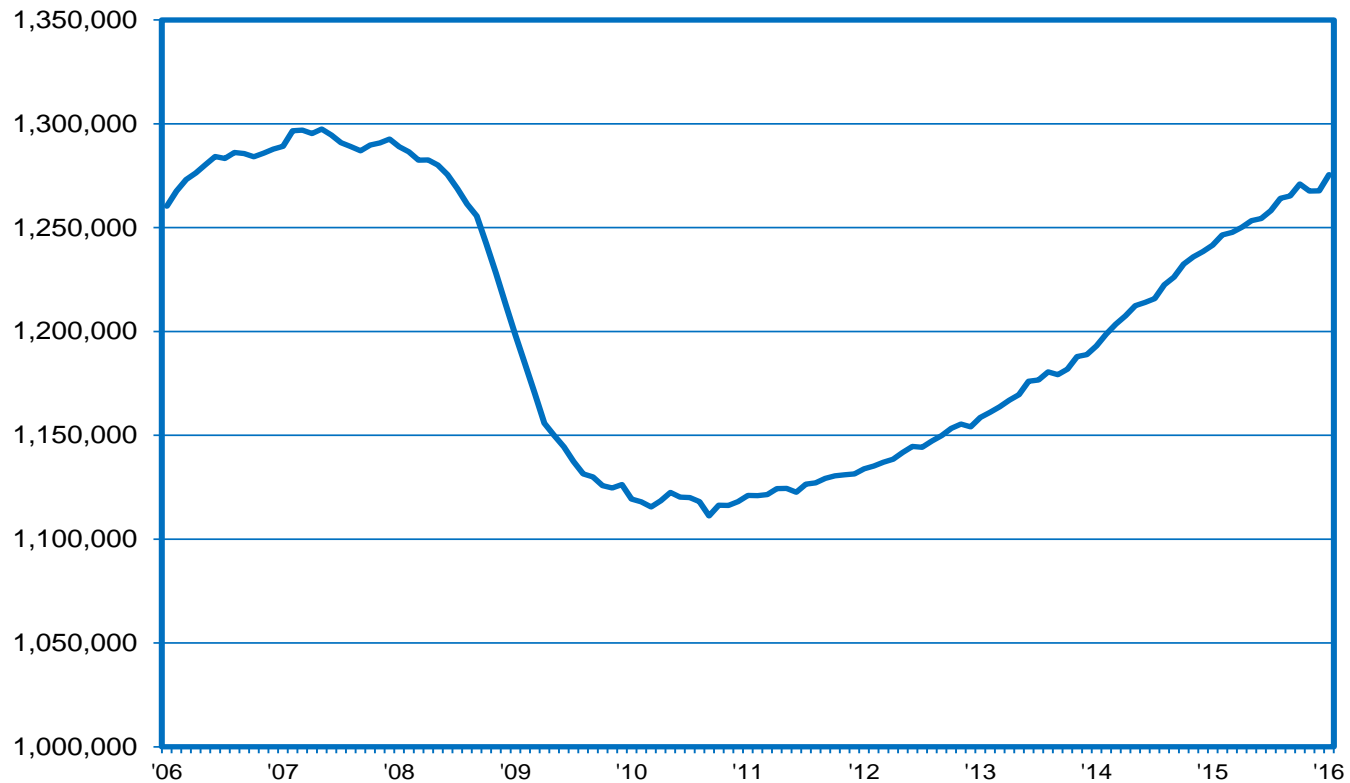
Initial Claims Down by 10%+ in Eight of Past Nine Months

Initial Claims for Unemployment Insurance



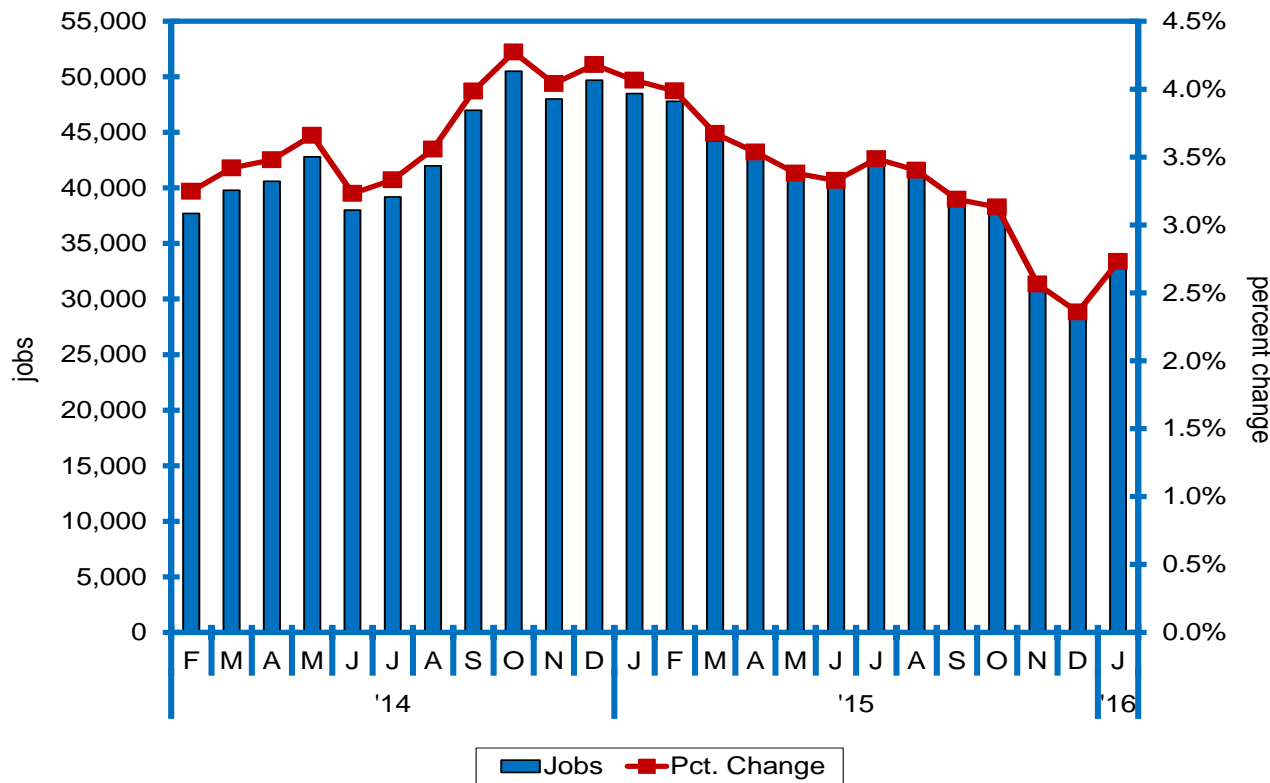
Increased vs. Previous Month Every Month but Six Since January 2011

Nonfarm Jobs in Nevada (SA)



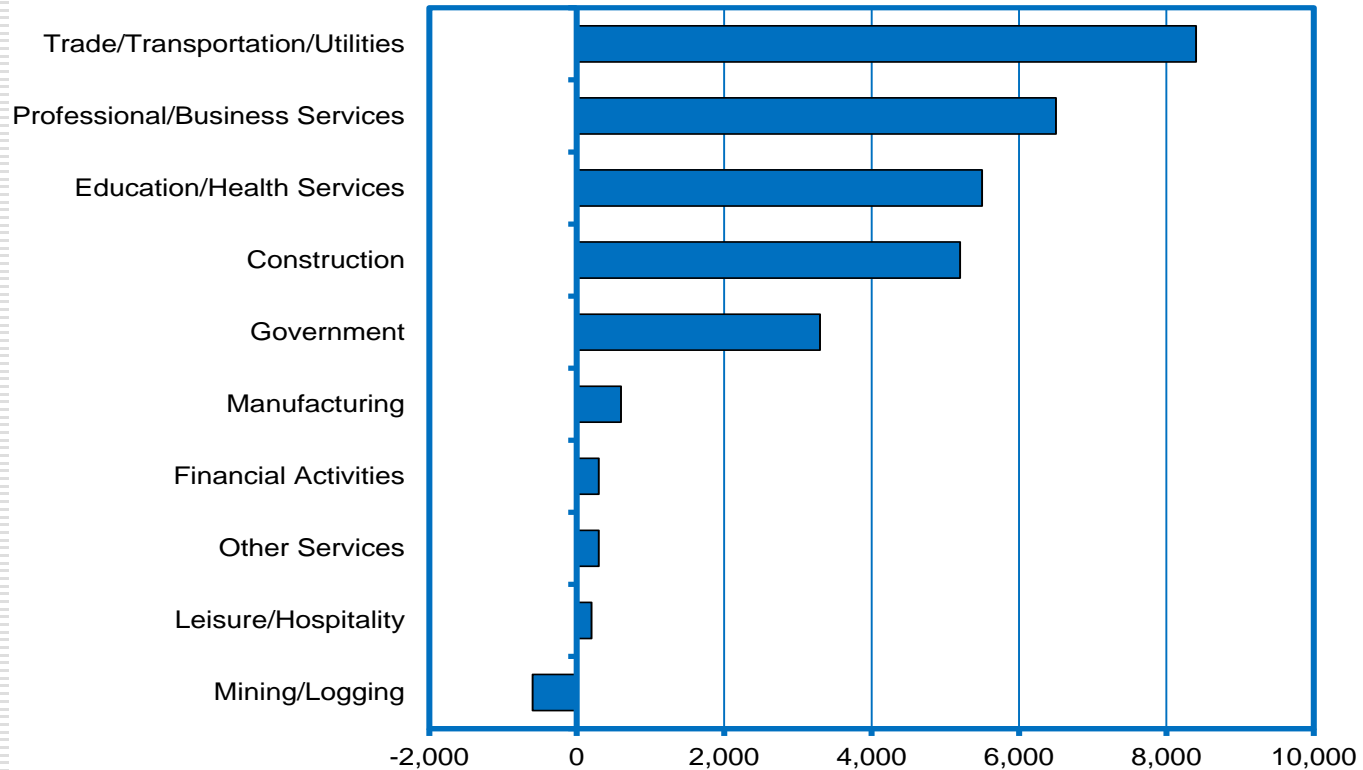
Job Growth has Eased a Bit; Still Adding 30K+ Jobs to Payrolls on Annualized Basis

Job Growth (SA; year-over-year)



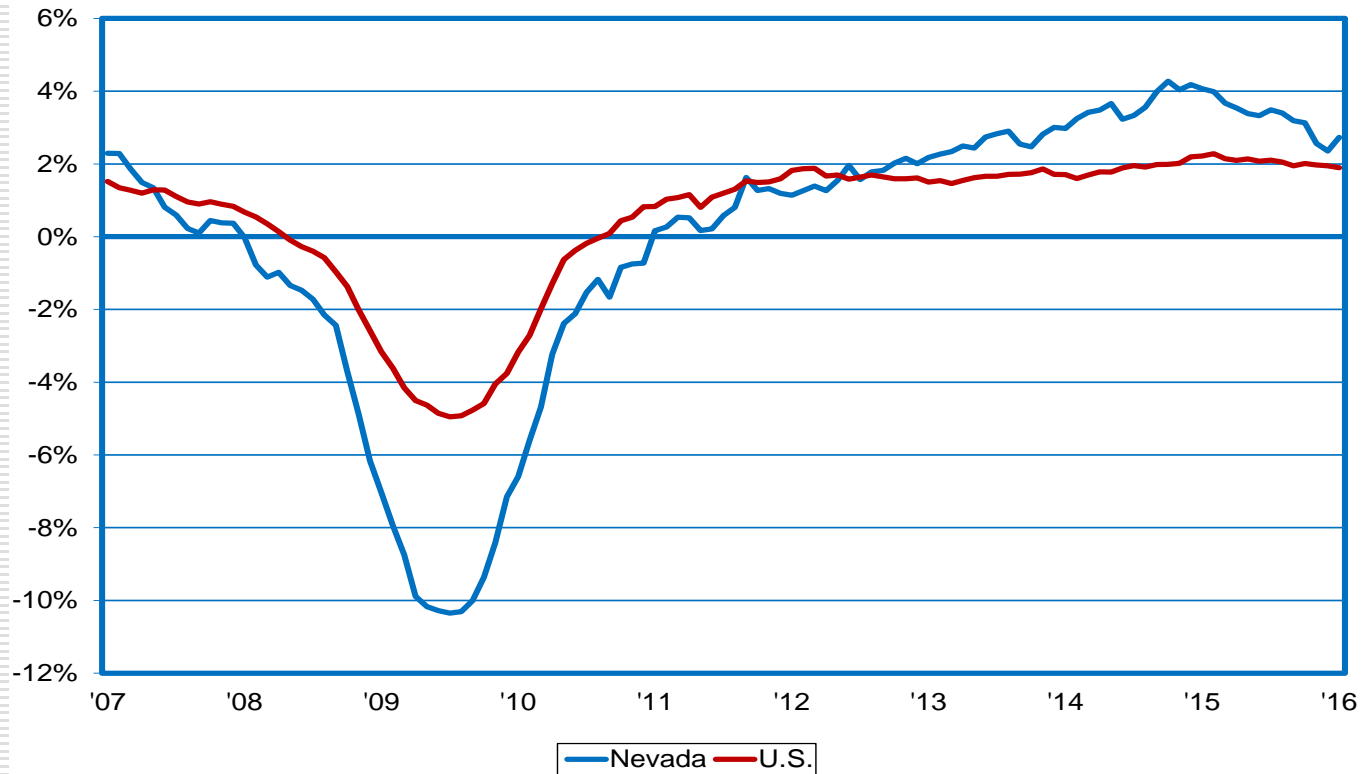
Trade, PBS, Healthcare, and Construction Lead the Way in Job Gains

YTD Job Growth by Sector (year-over-year)



NV Job Growth Exceeds Nation in 42 Straight Months; 2.7% vs. 1.9% in January

Job Growth (year-over-year)



Nearly 140K New Private Sector Jobs Over 2010-2015; Trending 26K Higher in 2016

Nevada Job Growth Since 2010

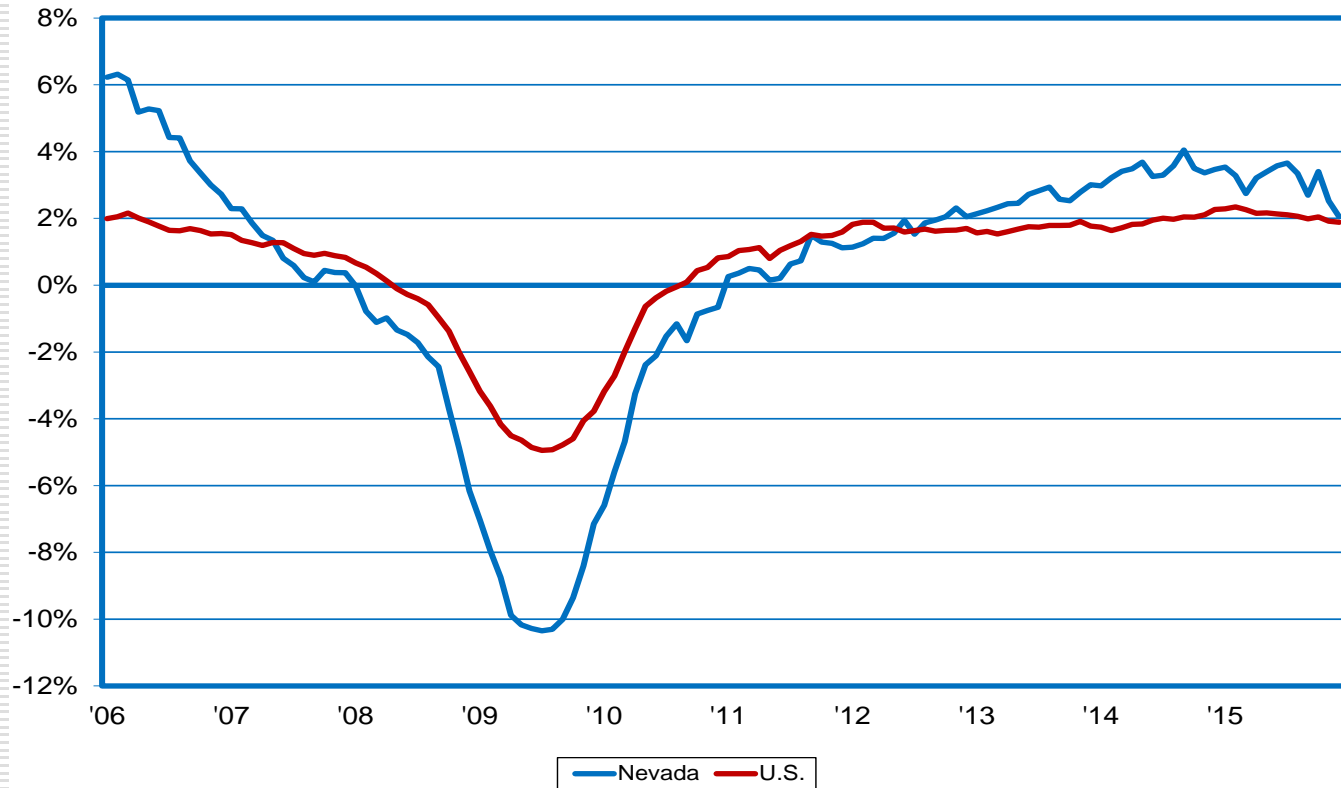
	Total (Private+Public)	Private Sector
2010 Baseline	1,117,800	964,000
Calculation of 2011 Growth		
2011	1,125,700	975,500
Growth from 2010	7,900	11,500
Calculation of 2012 Growth		
2012	1,144,800	995,400
Growth from 2011	19,100	19,900
Calculation of 2013 Growth		
2013	1,174,300	1,023,300
Growth from 2012	29,500	27,900
Calculation of 2014 Growth		
2014	1,216,900	1,064,400
Growth from 2013	42,600	41,100
Calculation of 2015 Growth		
2015	1,257,600	1,102,600
Growth from 2014	40,700	38,200
Calculation of 2016 Year-to-Date Growth		
2015 Year-to-Date (through January)	1,228,800	1,076,200
2016 Year-to-Date (through January)	1,258,200	1,102,300
Growth from 2015	29,400	26,100
Total Growth Since 2010 (2011 Growth + 2012 Growth + 2013 Growth + 2014 Growth +2015 Growth+2016 YTD Growth)	169,200	164,700



The Nevada Department of Employment, Training and Rehabilitation is a proactive workforce & rehabilitation agency

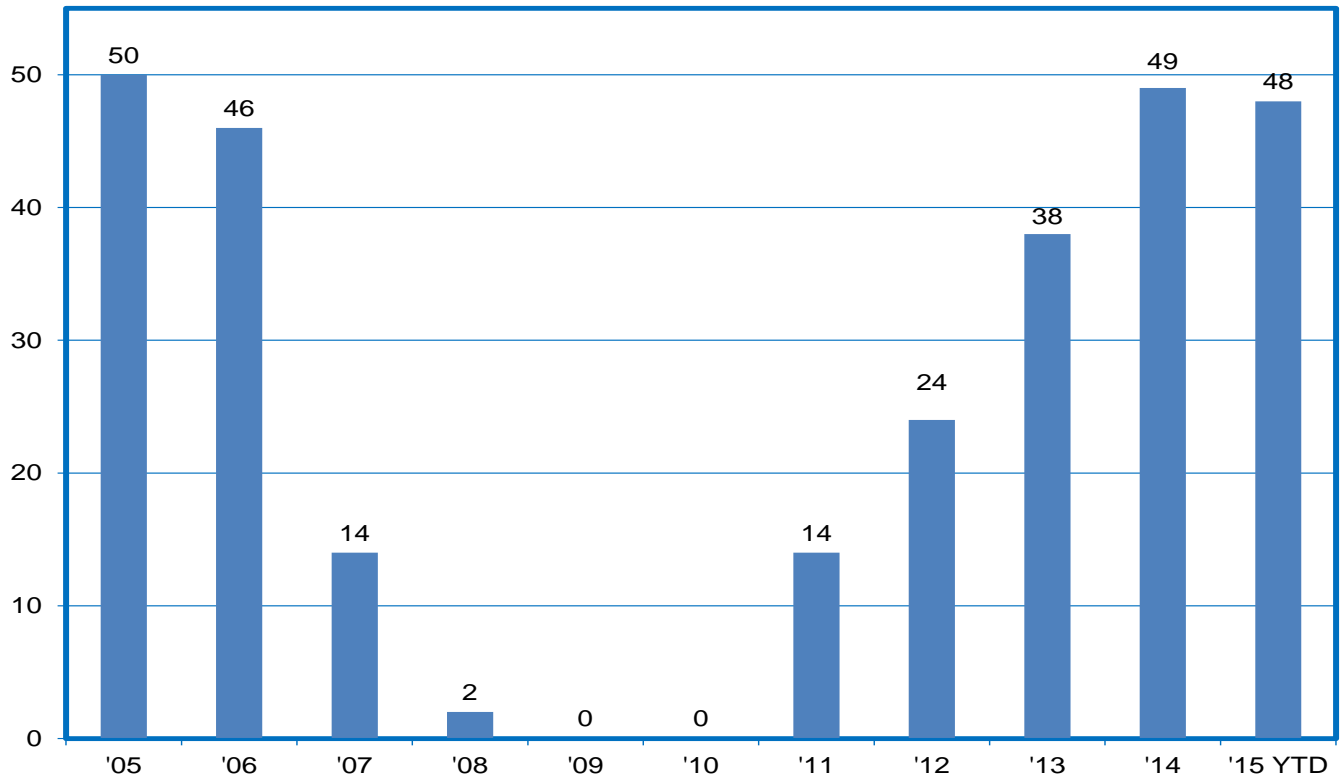
NV Job Growth Exceeds Nation in 41 Straight Months; 2% vs. 1.9% in December

Job Growth (year-over-year)



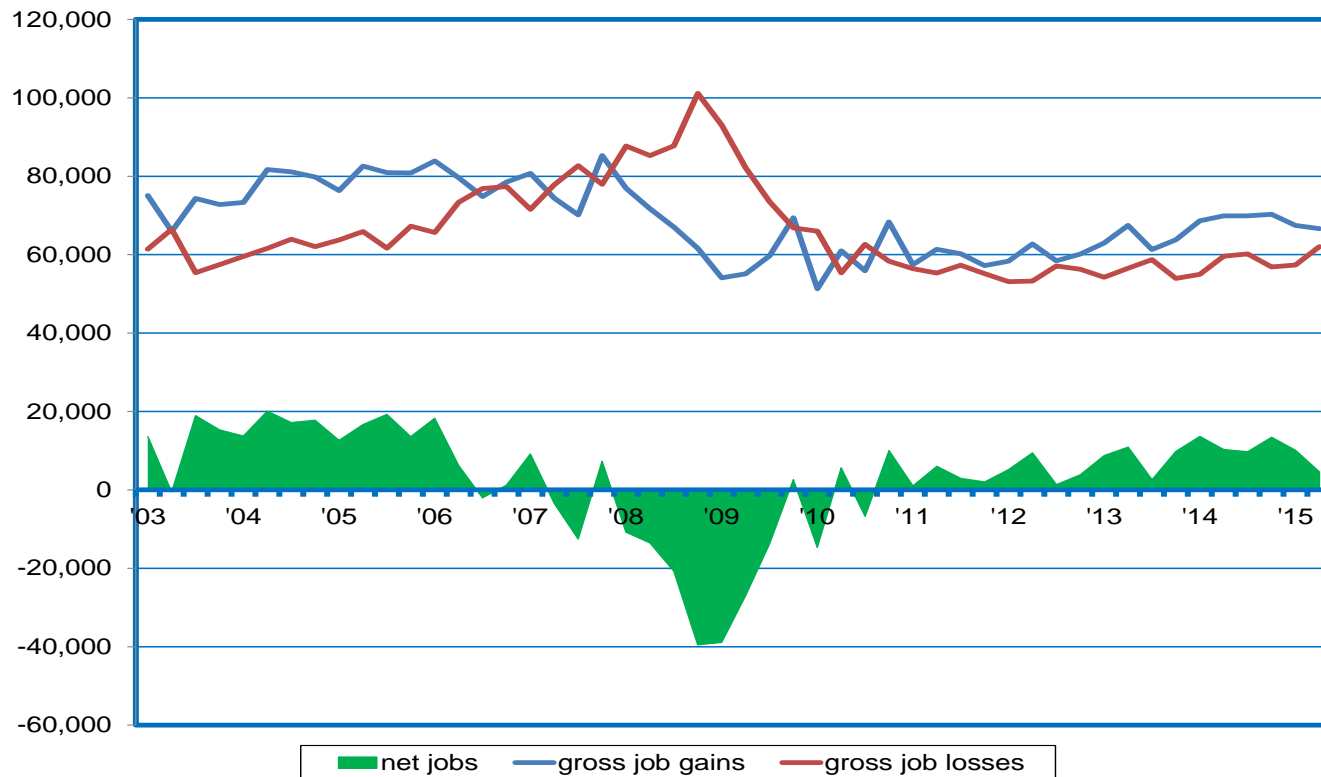
Silver State Job Growth #3 in the Nation

Job Growth Rankings (# of states with slower private sector job growth than NV; 2015 YTD through IIQ)



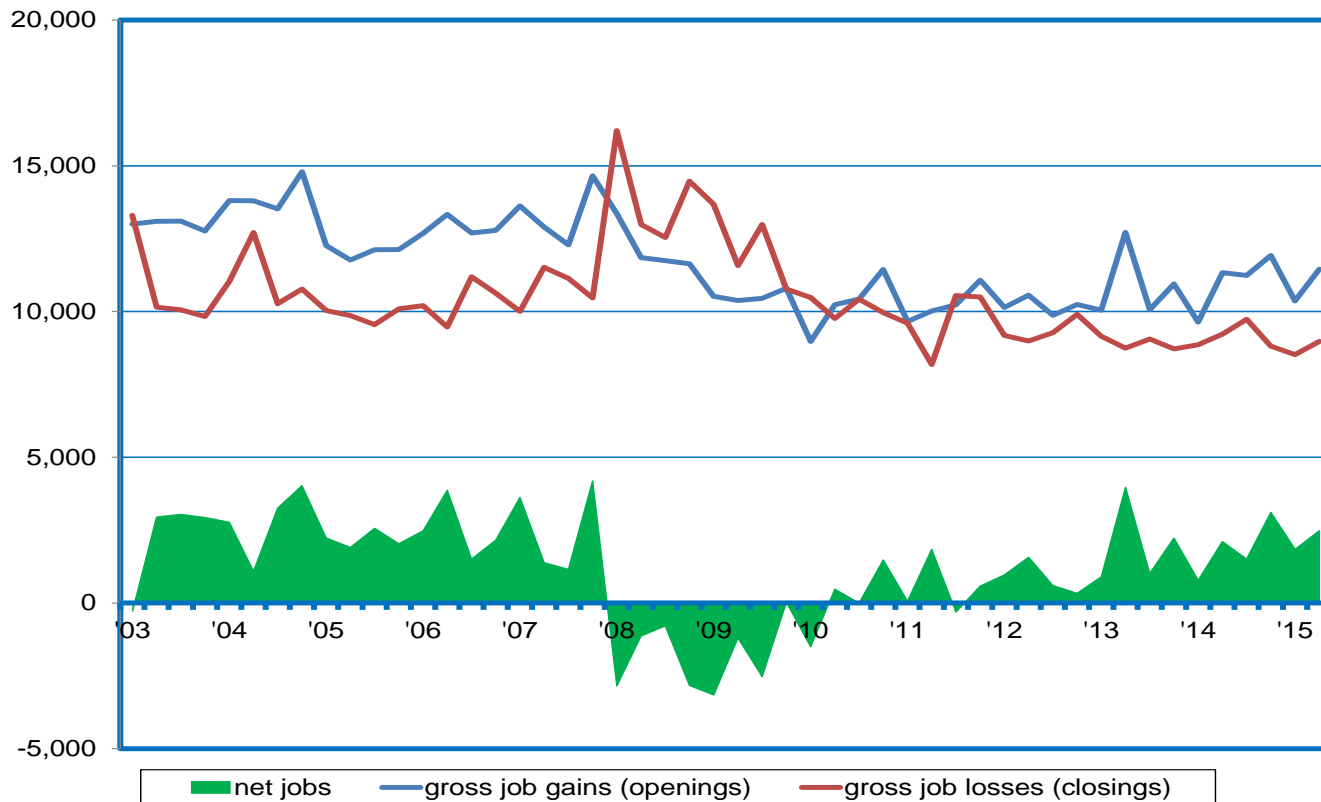
Job Gains > Losses in 19 Straight Qtrs.

Private Sector Gross Job Gains vs. Gross Job Losses; Business Employment Dynamics (Seasonally Adjusted)



Opening Gains > Closing Losses Last 15 Qtrs.

Gross Job Gains vs. Gross Job Losses in Opening & Closing Establishments;
Business Employment Dynamics (Seasonally Adjusted)





For Additional Information, Please Contact:

Nevada Department of Employment, Training and Rehabilitation Research and Analysis Bureau

Bill Anderson
Chief Economist
wdanderson@nvdetr.org

Christopher Robison
Supervising Economist
c-robison@nvdetr.org

(775) 684-0450
<http://www.nevadaworkforce.com>
follow us on Twitter @nvlabormarket

