

**MEDIA CONTACT**  
VALENTINA  
BONAPARTE  
[detrmedia@detr.nv.gov](mailto:detrmedia@detr.nv.gov)



**JOE LOMBARDO**  
GOVERNOR

**CHRISTOPHER SEWELL**  
DIRECTOR

**David Schmidt**  
Chief Economist

## **COUNTIES AND CITIES PRESS RELEASE**

**For Immediate Release**  
**March 26, 2024**

### **Unemployment rate decreases in March**

According to the Nevada Department of Employment, Training and Rehabilitation's ([DETR](#)) March 2024 economic report, the state's seasonally adjusted unemployment rate was 5.1 percent in March 2024 which decreased by 0.1 percent from February 2024. Seasonally adjusted estimates account for regularly seen economic patterns, with the following estimates not seasonally adjusted.

In the three Metropolitan Statistical Areas (MSA), the unemployment rates were 5.1 percent in the Las Vegas area, 4.2 percent in Reno, and 4.8 percent in the Carson area in March 2024.

In Nevada's counties, the lowest unemployment rate was in Lander County and White Pine County at 3.6 percent each, and Nye County had the highest rate at 6.4 percent. For a look at the unemployment rate in your county, visit our [Area Profiles Page](#).

For the latest information on the Nevada economy including employment, unemployment, and unemployment insurance check out our monthly [Labor Market Overview](#), or to see the data on your area, take a look at our monthly [Local Area Labor Market Overview](#).

Additional information on unemployment estimates along with a complete breakout of unemployment in counties, cities, and other areas in Nevada can be found by visiting our [Local Area Unemployment Statistics](#) page. Additionally, employment estimates by industry can be found at our [Current Employment Statistics](#) page.

—###—

#### **ABOUT THE RESEARCH AND ANALYSIS BUREAU:**

The [Research and Analysis Bureau](#) is Nevada's premier source for labor market information. A part of DETR, the Bureau is responsible for creating, analyzing, and reporting Nevada's labor market information, in cooperation with the United States Bureau of Labor Statistics (BLS).

**500 E. Third Street, Room 200 | Carson City, Nevada 89713 | 2800 E. St. Louis Ave. | Las Vegas, NV 89104**  
**Phone: (775) 684-3911 | (702) 486-7923 | <https://detr.nv.gov> | Fax: (775) 684-6426 | Fax: (702) 486-7924**

**MEDIA CONTACT**  
VALENTINA BONAPARTE  
[detrmedia@detr.nv.gov](mailto:detrmedia@detr.nv.gov)



**JOE LOMBARDO**  
GOVERNOR

**CHRISTOPHER SEWELL**  
DIRECTOR

**DAVID SCHMIDT**  
CHIEF ECONOMIST

## Counties and Cities Employment & Unemployment

**March 2024**

Published on April 23, 2024

In March 2024, the seasonally adjusted unemployment rate in Nevada decreased by 0.1 percentage points and now sits at 5.1 percent. The unadjusted rate went down by 0.1 percentage points from 5 percent to 4.9 percent. The number of employed individuals in the state went up by 911.

At the MSA (Metropolitan Statistical Area) level, the state saw a decrease in unemployment in one of its MSAs (Las Vegas-Paradise) and no change in the Reno-Sparks MSA and the Carson City MSA. In the Carson City MSA, the rate stayed at 4.8 percent. In the Las Vegas Paradise MSA, the rate decreased by 0.1 percentage points from 5.2 percent to 5.1 percent. Finally, in the Reno-Sparks MSA the rate stayed at 4.2 percent. These figures are not adjusted for seasonality.

At the county level, the state saw decreases or no change in unemployment in most of its counties. The counties with the largest decreases were Mineral, Lyon, and Nye with decreases of 0.7 percentage points, 0.3 percentage points, and 0.3 percentage points, respectively. The counties with the largest increases were Esmeralda and Lincoln with increases of 0.7 percentage points and 0.3 percentage points, respectively.

Figures for state unemployment estimates come from the Local Area Unemployment Statistics (LAUS) program, a state/federal partnership sponsored by the Bureau of Labor Statistics (BLS-LAUS). This program produces monthly and annual employment, unemployment, and labor force data for census regions, states, counties, metropolitan areas, and many large cities, based on place of residence. For more on LAUS data or for a look at estimates in your area visit our [LAUS Page](#), and for a look that the economic profile of Nevada, the metropolitan areas, or your county visit our [Area Profiles](#) Page.

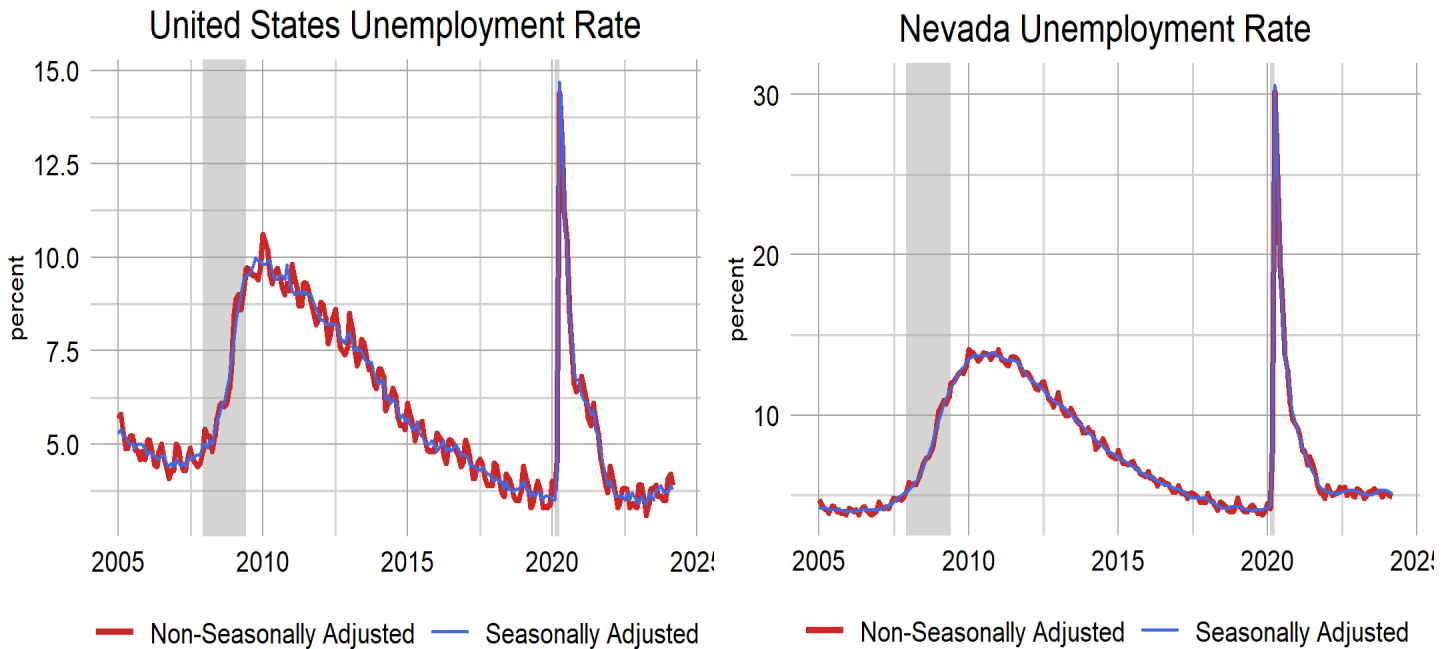
## U.S. & Nevada Local Area Unemployment Statistics

Area	Labor Force	Employed	Unemployed	Unemployment Rate	Labor Force Participation Rate	Employment Population Ratio
<b>US</b>						
U.S.	167,960,000	161,356,000	6,604,000	3.9	62.7	60.2
U.S. SA	167,895,000	161,466,000	6,429,000	3.8	62.7	60.3
<b>State</b>						
Nevada	1,615,353	1,535,572	79,781	4.9	62.7	59.6
Nevada SA	1,614,300	1,531,524	82,776	5.1	62.7	59.5

SA denotes seasonally adjusted data

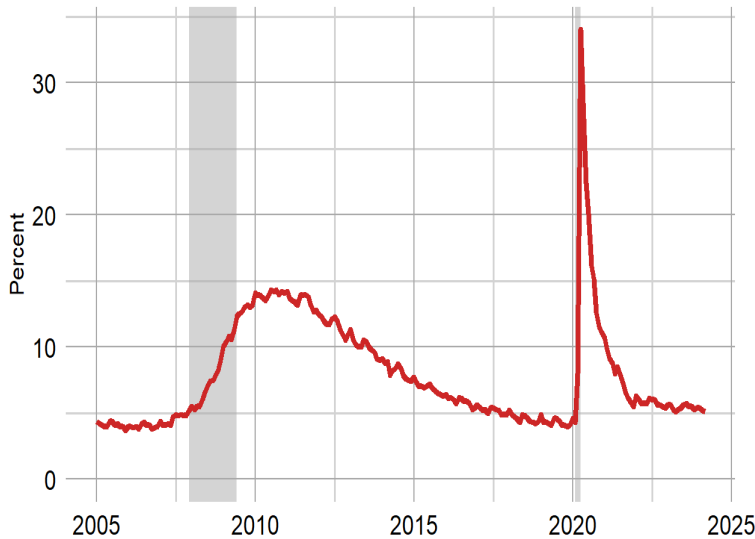
Seasonally adjusted estimates account for regularly seen seasonal employment patterns such as jobs associated with holiday hiring, holiday and weather seasons, or other jobs with seasonal components. The result of a seasonally adjusted estimate is usually a smoother estimate from which underlying economic trends can be seen. Adjusted estimates are in the summary table above, and in many of the other tables and figures throughout this document.

Nevada’s seasonally adjusted unemployment rate was 5.1 percent in March, which decreased by 0.1 percentage points from 5.2 percent in February and was unchanged from 5.1 percent in 2023. The number of unemployed individuals decreased by 1,025 from February to a current level of 82,776 people, which increased by 2,101 unemployed people since 2023. The labor force in Nevada is currently 1,614,300 people, which has decreased by 114 people from February, and increased by 21,340 people since 2023.



The Las Vegas Metropolitan Statistical Area's (MSA)s unemployment rate was 5.1 percent in March 2024, decreasing from 5.2 percent in February 2024, and down from 5.3 percent in March 2023, non-seasonally adjusted. The number of unemployed individuals decreased by 1,461 since February 2024 to a current level of 61,180 people, which is 1,528 less unemployed people than March 2023. The labor force in Las Vegas is currently 1,198,439 people, which is 3,190 less people than February 2024, and is up 16,977 people since March 2023.

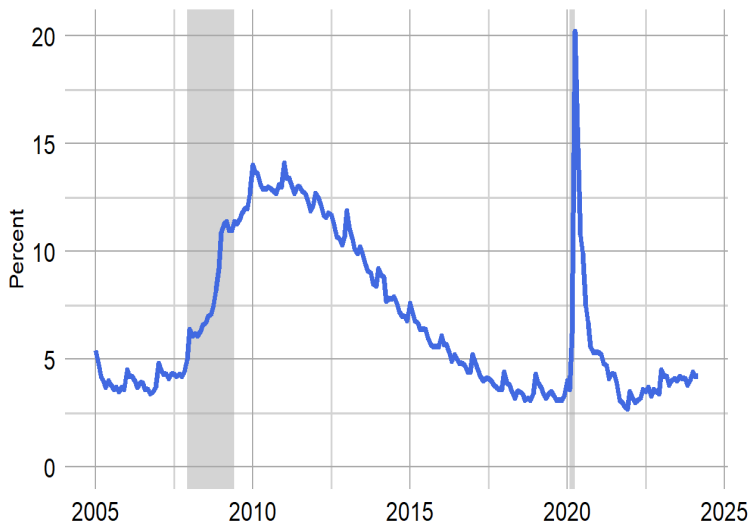
Las Vegas Unemployment Rate



Las Vegas LAUS Summary	
<b>Unemployment Rate</b>	
Unemployment Rate	5.1
Previous Month	5.2
Previous Year	5.3
Maximum Rate	34
<b>Unemployed Individuals</b>	
Unemployment Level	61,180
Monthly Change	1,461
Annual Change	1,528
Maximum Level	369,106

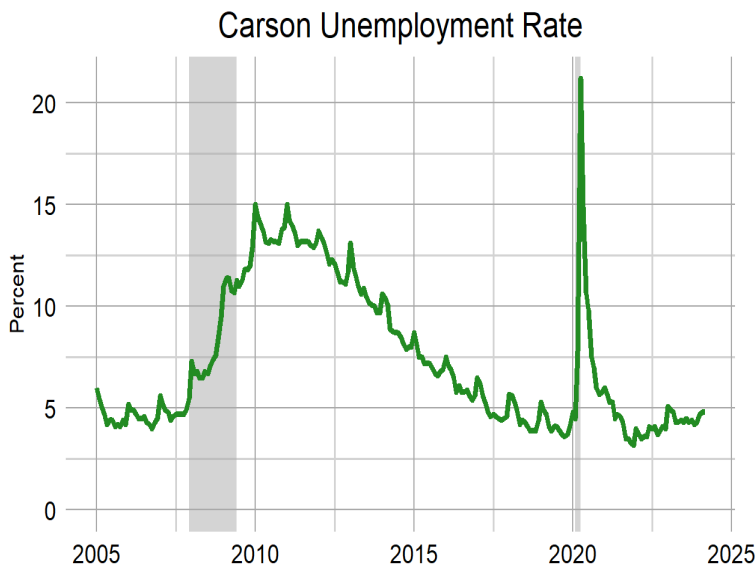
The Reno MSA's unemployment rate was 4.2 percent in March 2024, unchanged from 4.2 percent in February 2024, and from 4.2 percent in March 2023, non-seasonally adjusted. The number of unemployed individuals decreased by 1 since February 2024 to a current level of 11,320 people, which is 278 more unemployed people than March 2023. The labor force in Reno is currently 267,424 people, which is 618 more people than February 2024, and is up 3,200 people since March 2023.

Reno Unemployment Rate



Reno LAUS Summary	
<b>Unemployment Rate</b>	
Unemployment Rate	4.2
Previous Month	4.2
Previous Year	4.2
Maximum Rate	20.2
<b>Unemployed Individuals</b>	
Unemployment Level	11,320
Monthly Change	1
Annual Change	278
Maximum Level	47,792

The Carson City MSA’s unemployment rate was 4.8 percent in March 2024, unchanged from 4.8 percent in February 2024, and from 4.8 percent in March 2023, non-seasonally adjusted. The number of unemployed individuals decreased by 13 since February 2024 to a current level of 1,243 people, which is 3 less unemployed people than March 2023. The labor force in Carson City is currently 26,022 people, which is 15 less people than February 2024, and is up 39 people since March 2023.



<b>Carson City LAUS Summary</b>	
<b>Unemployment Rate</b>	
Unemployment Rate	4.8
Previous Month	4.8
Previous Year	4.8
Maximum Rate	21.2
<b>Unemployed Individuals</b>	
Unemployment Level	1,243
Monthly Change	13
Annual Change	3
Maximum Level	5,191

For more on the economy of your county including unemployment, employment, unemployment insurance, wages, and more visit our [Area Profiles Page](#).

## Local Area Unemployment Statistics

Area		Labor Force	Employed	Unemployed	Unemployment Rate
<b>US</b>					
U.S.	SA	167,895,000	161,466,000	6,429,000	3.8
U.S.		167,960,000	161,356,000	6,604,000	3.9
<b>State</b>					
Nevada		1,615,353	1,535,572	79,781	4.9
Nevada	SA	1,614,300	1,531,524	82,776	5.1
<b>Metropolitan Statistical Area</b>					
Reno - Sparks MSA		267,424	256,104	11,320	4.2
Carson City MSA		26,022	24,779	1,243	4.8
Las Vegas - Paradise MSA		1,198,439	1,137,259	61,180	5.1
<b>Combined Statistical Area</b>					
Reno-Carson City-Fernley, Nv Combined Statistical Area		339,189	324,160	15,029	4.4
<b>County</b>					
Lander County		3,152	3,038	114	3.6
White Pine County		4,563	4,400	163	3.6
Elko County		25,452	24,473	979	3.8
Humboldt County		7,642	7,336	306	4.0
Churchill County		11,045	10,595	450	4.1
Washoe County		265,267	254,042	11,225	4.2
Eureka County		957	915	42	4.4
Storey County		2,157	2,062	95	4.4
Douglas County		22,486	21,449	1,037	4.6
Lincoln County		1,979	1,886	93	4.7
Carson City		26,022	24,779	1,243	4.8
Clark County		1,198,439	1,137,259	61,180	5.1
Pershing County		2,310	2,191	119	5.2
Esmeralda County		477	449	28	5.9
Mineral County		1,531	1,439	92	6.0
Lyon County		23,257	21,828	1,429	6.1
Nye County		18,618	17,434	1,184	6.4
<b>Labor Market Area</b>					
Elko Micropolitan Area		26,409	25,388	1,021	3.9
Winnemucca Micropolitan Area		7,642	7,336	306	4.0
Fallon Micropolitan Area		11,045	10,595	450	4.1
Gardnerville Micropolitan Area		22,486	21,449	1,037	4.6
Fernley Micropolitan Area		23,257	21,828	1,429	6.1
Pahrump Micropolitan Area		18,618	17,434	1,184	6.4
<b>City</b>					
Elko City*		9,931	9,545	386	3.9
Sparks		59,553	57,077	2,476	4.2
Mesquite*		8,667	8,291	376	4.3
Reno		144,354	138,175	6,179	4.3
Boulder City*		7,910	7,535	375	4.7
Henderson		176,673	168,246	8,427	4.8
Las Vegas		330,463	313,173	17,290	5.2
North Las Vegas		125,029	117,427	7,602	6.1
Fernley City*		8,765	8,222	543	6.2

\*State Specific Areas, not endorsed or published by the BLS

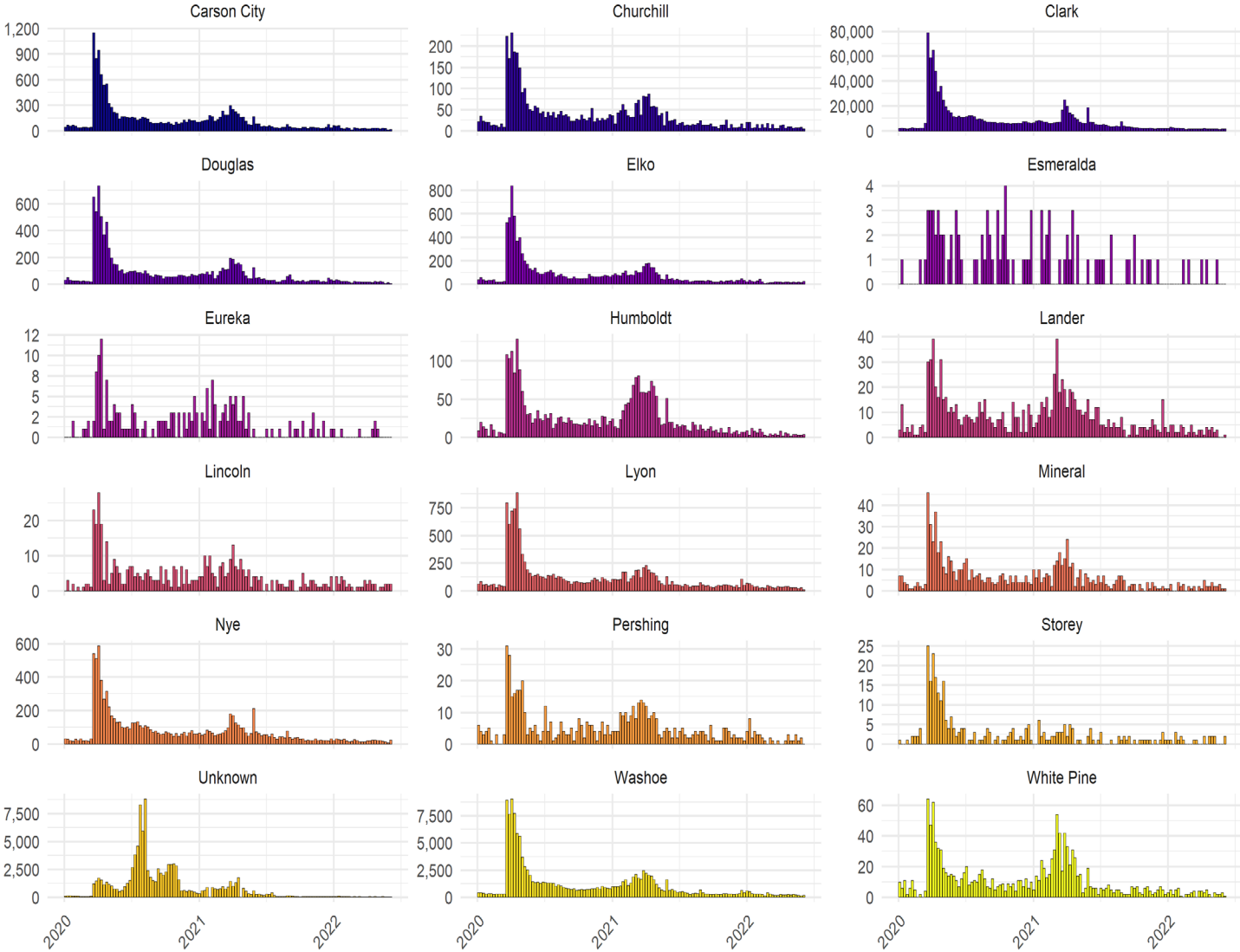
SA denotes seasonally adjusted data

The cities of Boulder City, Elko, Fernley, and Mesquite are state specific areas. These estimates are not endorsed or published by the BLS.

# Unemployment Insurance Benefits

Looking at our monthly UI data, in March 2024, 10,296 initial claims for unemployment insurance were filed in Nevada, a decrease of 632 claims, or 5.8 percent, from February 2024 when there were 10,928 claims. This figure is an increase from the 9,639 figure that was observed in March of 2023.

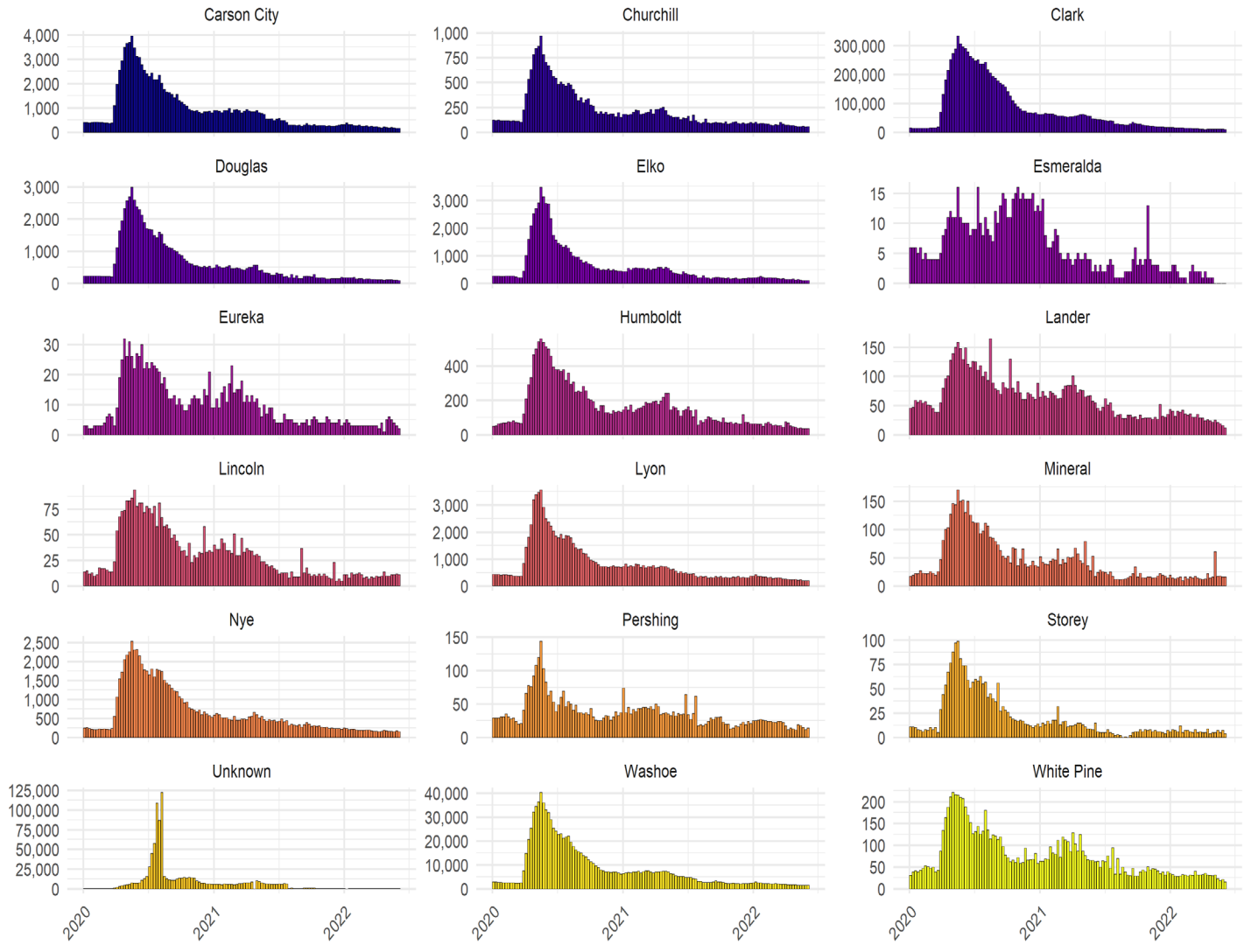
Initial Claims by County  
weekly claim totals since January 2020



Source: DETR Internal Reporting

# Continued Claims by County

weekly claim totals since January 2020



Source: DETR Internal Reporting  
Figure 11



Looking to our measures of unemployment insurance activity, final payments were down across the state. First payments also saw a decrease over the month. In Clark County, for example, first payments decreased by 361 down to 3,707 or a percentage decrease of nearly 8.9%. Final payments decreased by 55 down to 1595 or a percentage decrease of nearly 3.3%. Washoe County also saw a decrease in first payments, with first payments going down by 86 from 878 to 792. Final payments in Washoe County were up by 6 from 201 to 207. Carson City experienced a decrease in first payments moving from 105 to 72 or a decrease of 33. Final payments in Carson City were up 15, moving from 17 to 32. Statewide, the Weeks Compensated decreased by 1,638 or 1.8% over the month. Benefit Payments made decreased by approximately \$848,067 or 2%.

Table 1: UI Claims Activity by County

March 2024

	County	First Payments	Final Payments	Weeks Compensated	Benefit Payments	Average Weekly Benefit
	Carson City	72	32	1,335	\$635,237	\$475.83
	Churchill	21	3	307	\$146,897	\$478.49
	Clark	3,707	1,595	65,949	\$30,720,824	\$465.83
	Douglas	45	11	763	\$379,431	\$497.29
	Elko	44	13	618	\$298,136	\$482.42
	Esmeralda	1	2	32	\$16,769	\$524.03
	Eureka	0	1	19	\$10,558	\$555.68
	Humboldt	12	2	150	\$69,924	\$466.16
	Lander	3	3	106	\$54,842	\$517.38
	Lincoln	3	2	48	\$23,922	\$498.38
	Lyon	102	23	1,635	\$802,887	\$491.06
	Mineral	2	1	60	\$29,079	\$484.65
	Nye	44	27	987	\$431,467	\$437.15
	Pershing	4	4	89	\$41,271	\$463.72
	Storey	1	0	32	\$14,462	\$451.94
	Unknown	171	87	2,767	\$1,539,277	\$556.30
	Washoe	792	207	11,893	\$5,886,696	\$494.97
	White Pine	7	5	116	\$53,284	\$459.34
Statewide	—	5,031	2,018	86,906	\$41,154,963	—

Source: DETR Internal Reporting

## Unemployment Rate Summary LAUS

Area		March 2024	February 2024	Monthly Change	March 2023	Yearly Change
<b>US</b>						
U.S.	SA	3.8	3.9	-0.1	3.5	0.3
U.S.		3.9	4.2	-0.3	3.6	0.3
<b>State</b>						
Nevada		4.9	5.0	-0.1	5.1	-0.2
Nevada	SA	5.1	5.2	-0.1	5.1	0.0
<b>Metropolitan Statistical Area</b>						
Reno - Sparks MSA		4.2	4.2	0.0	4.2	0.0
Carson City MSA		4.8	4.8	0.0	4.8	0.0
Las Vegas - Paradise MSA		5.1	5.2	-0.1	5.3	-0.2
<b>Combined Statistical Area</b>						
Reno-Carson City-Fernley, Nv Combined Statistical Area		4.4	4.5	-0.1	4.4	0.0
<b>County</b>						
Lander County		3.6	3.6	0.0	3.4	0.2
White Pine County		3.6	3.5	0.1	3.5	0.1
Elko County		3.8	3.7	0.1	3.4	0.4
Humboldt County		4.0	3.9	0.1	3.5	0.5
Churchill County		4.1	4.2	-0.1	4.1	0.0
Washoe County		4.2	4.2	0.0	4.2	0.0
Eureka County		4.4	4.4	0.0	3.0	1.4
Storey County		4.4	4.5	-0.1	4.3	0.1
Douglas County		4.6	4.6	0.0	4.5	0.1
Lincoln County		4.7	4.4	0.3	4.2	0.5
Carson City		4.8	4.8	0.0	4.8	0.0
Clark County		5.1	5.2	-0.1	5.3	-0.2
Pershing County		5.2	5.4	-0.2	4.7	0.5
Esmeralda County		5.9	5.2	0.7	3.0	2.9
Mineral County		6.0	6.7	-0.7	6.1	-0.1
Lyon County		6.1	6.4	-0.3	6.1	0.0
Nye County		6.4	6.7	-0.3	5.9	0.5
<b>Labor Market Area</b>						
Elko Micropolitan Area		3.9	3.7	0.2	3.4	0.5
Winnemucca Micropolitan Area		4.0	3.9	0.1	3.5	0.5
Fallon Micropolitan Area		4.1	4.2	-0.1	4.1	0.0
Gardnerville Micropolitan Area		4.6	4.6	0.0	4.5	0.1
Fernley Micropolitan Area		6.1	6.4	-0.3	6.1	0.0
Pahrump Micropolitan Area		6.4	6.7	-0.3	5.9	0.5
<b>City</b>						
Elko City*		3.9	3.7	0.2	3.6	0.3
Sparks		4.2	4.1	0.1	4.0	0.2
Mesquite*		4.3	4.3	0.0	3.7	0.6
Reno		4.3	4.3	0.0	4.2	0.1
Boulder City*		4.7	5.0	-0.3	4.5	0.2
Henderson		4.8	4.8	0.0	4.8	0.0
Las Vegas		5.2	5.3	-0.1	5.5	-0.3
North Las Vegas		6.1	6.2	-0.1	6.3	-0.2
Fernley City*		6.2	6.6	-0.4	6.3	-0.1

\* State Specific Areas, not endorsed or published by the BLS

SA denotes seasonally adjusted data

## Labor Force Levels Summary LAUS

Area	March 2024	February 2024	Monthly Change	March 2023	Yearly Change
<b>US</b>					
U.S.	167,960,000	167,285,000	675,000	166,783,000	1,177,000
U.S. SA	167,895,000	167,426,000	469,000	166,731,000	1,164,000
<b>State</b>					
Nevada	1,615,353	1,617,573	-2,220	1,596,771	18,582
Nevada SA	1,614,300	1,614,414	-114	1,592,960	21,340
<b>Metropolitan Statistical Area</b>					
Carson City MSA	26,022	26,037	-15	25,983	39
Las Vegas - Paradise MSA	1,198,439	1,201,629	-3,190	1,181,462	16,977
Reno - Sparks MSA	267,424	266,806	618	264,224	3,200
<b>Combined Statistical Area</b>					
Reno-Carson City-Fernley, Nv Combined Statistical Area	339,189	338,630	559	336,515	2,674
<b>County</b>					
Churchill County	11,045	10,972	73	11,181	-136
Clark County	1,198,439	1,201,629	-3,190	1,181,462	16,977
Douglas County	22,486	22,526	-40	22,492	-6
Elko County	25,452	25,347	105	26,179	-727
Esmeralda County	477	465	12	496	-19
Eureka County	957	931	26	1,068	-111
Humboldt County	7,642	7,544	98	8,006	-364
Lander County	3,152	3,130	22	3,165	-13
Lincoln County	1,979	1,948	31	2,052	-73
Lyon County	23,257	23,261	-4	23,816	-559
Mineral County	1,531	1,542	-11	1,569	-38
Nye County	18,618	18,597	21	18,066	552
Pershing County	2,310	2,280	30	2,492	-182
Storey County	2,157	2,153	4	2,123	34
Washoe County	265,267	264,653	614	262,101	3,166
White Pine County	4,563	4,560	3	4,517	46
Carson City	26,022	26,037	-15	25,983	39
<b>Labor Market Area</b>					
Elko Micropolitan Area	26,409	26,278	131	27,247	-838
Fallon Micropolitan Area	11,045	10,972	73	11,181	-136
Fernley Micropolitan Area	23,257	23,261	-4	23,816	-559
Gardnerville Micropolitan Area	22,486	22,526	-40	22,492	-6
Pahrump Micropolitan Area	18,618	18,597	21	18,066	552
Winnemucca Micropolitan Area	7,642	7,544	98	8,006	-364
<b>City</b>					
Fernley City*	8,765	8,782	-17	8,990	-225
Boulder City*	7,910	7,942	-32	7,761	149
Elko City*	9,931	9,887	44	10,232	-301
Henderson	176,673	177,037	-364	173,905	2,768
Las Vegas	330,463	331,324	-861	325,928	4,535
Mesquite*	8,667	8,673	-6	8,469	198
North Las Vegas	125,029	125,388	-359	123,275	1,754
Reno	144,354	144,024	330	142,592	1,762
Sparks	59,553	59,389	164	58,798	755

\* State Specific Areas, not endorsed or published by the BLS

SA denotes seasonally adjusted data

## Employed Individuals Levels Summary LAUS

Area	March 2024	February 2024	Monthly Change	March 2023	Yearly Change
<b>US</b>					
U.S.	161,356,000	160,315,000	1,041,000	160,741,000	615,000
U.S. SA	161,466,000	160,968,000	498,000	160,892,000	574,000
<b>State</b>					
Nevada	1,535,572	1,536,243	-671	1,516,016	19,556
Nevada SA	1,531,524	1,530,613	911	1,512,285	19,239
<b>Metropolitan Statistical Area</b>					
Carson City MSA	24,779	24,781	-2	24,737	42
Las Vegas - Paradise MSA	1,137,259	1,138,988	-1,729	1,118,754	18,505
Reno - Sparks MSA	256,104	255,485	619	253,182	2,922
<b>Combined Statistical Area</b>					
Reno-Carson City-Fernley, Nv Combined Statistical Area	324,160	323,519	641	321,781	2,379
<b>County</b>					
Churchill County	10,595	10,516	79	10,725	-130
Clark County	1,137,259	1,138,988	-1,729	1,118,754	18,505
Douglas County	21,449	21,488	-39	21,489	-40
Elko County	24,473	24,408	65	25,278	-805
Esmeralda County	449	441	8	481	-32
Eureka County	915	890	25	1,036	-121
Humboldt County	7,336	7,253	83	7,727	-391
Lander County	3,038	3,018	20	3,057	-19
Lincoln County	1,886	1,862	24	1,965	-79
Lyon County	21,828	21,765	63	22,373	-545
Mineral County	1,439	1,439	0	1,473	-34
Nye County	17,434	17,353	81	17,003	431
Pershing County	2,191	2,157	34	2,375	-184
Storey County	2,062	2,056	6	2,032	30
Washoe County	254,042	253,429	613	251,150	2,892
White Pine County	4,400	4,400	0	4,360	40
Carson City	24,779	24,781	-2	24,737	42
<b>Labor Market Area</b>					
Elko Micropolitan Area	25,388	25,298	90	26,314	-926
Fallon Micropolitan Area	10,595	10,516	79	10,725	-130
Fernley Micropolitan Area	21,828	21,765	63	22,373	-545
Gardnerville Micropolitan Area	21,449	21,488	-39	21,489	-40
Pahrump Micropolitan Area	17,434	17,353	81	17,003	431
Winnemucca Micropolitan Area	7,336	7,253	83	7,727	-391
<b>City</b>					
Fernley City*	8,222	8,198	24	8,427	-205
Boulder City*	7,535	7,547	-12	7,413	122
Elko City*	9,545	9,519	26	9,859	-314
Henderson	168,246	168,502	-256	165,508	2,738
Las Vegas	313,173	313,649	-476	308,077	5,096
Mesquite*	8,291	8,304	-13	8,157	134
North Las Vegas	117,427	117,606	-179	115,517	1,910
Reno	138,175	137,841	334	136,602	1,573
Sparks	57,077	56,939	138	56,427	650

\* State Specific Areas, not endorsed or published by the BLS

SA denotes seasonally adjusted data

## Unemployed Individuals Levels Summary LAUS

Area	March 2024	February 2024	Monthly Change	March 2023	Yearly Change
<b>US</b>					
U.S.	6,604,000	6,970,000	-366,000	6,043,000	561,000
U.S. SA	6,429,000	6,458,000	-29,000	5,839,000	590,000
<b>State</b>					
Nevada	79,781	81,330	-1,549	80,755	-974
Nevada SA	82,776	83,801	-1,025	80,675	2,101
<b>Metropolitan Statistical Area</b>					
Carson City MSA	1,243	1,256	-13	1,246	-3
Las Vegas - Paradise MSA	61,180	62,641	-1,461	62,708	-1,528
Reno - Sparks MSA	11,320	11,321	-1	11,042	278
<b>Combined Statistical Area</b>					
Reno-Carson City-Fernley, Nv Combined Statistical Area	15,029	15,111	-82	14,734	295
<b>County</b>					
Churchill County	450	456	-6	456	-6
Clark County	61,180	62,641	-1,461	62,708	-1,528
Douglas County	1,037	1,038	-1	1,003	34
Elko County	979	939	40	901	78
Esmeralda County	28	24	4	15	13
Eureka County	42	41	1	32	10
Humboldt County	306	291	15	279	27
Lander County	114	112	2	108	6
Lincoln County	93	86	7	87	6
Lyon County	1,429	1,496	-67	1,443	-14
Mineral County	92	103	-11	96	-4
Nye County	1,184	1,244	-60	1,063	121
Pershing County	119	123	-4	117	2
Storey County	95	97	-2	91	4
Washoe County	11,225	11,224	1	10,951	274
White Pine County	163	160	3	157	6
Carson City	1,243	1,256	-13	1,246	-3
<b>Labor Market Area</b>					
Elko Micropolitan Area	1,021	980	41	933	88
Fallon Micropolitan Area	450	456	-6	456	-6
Fernley Micropolitan Area	1,429	1,496	-67	1,443	-14
Gardnerville Micropolitan Area	1,037	1,038	-1	1,003	34
Pahrump Micropolitan Area	1,184	1,244	-60	1,063	121
Winnemucca Micropolitan Area	306	291	15	279	27
<b>City</b>					
Fernley City*	543	584	-41	563	-20
Boulder City*	375	395	-20	348	27
Elko City*	386	368	18	373	13
Henderson	8,427	8,535	-108	8,397	30
Las Vegas	17,290	17,675	-385	17,851	-561
Mesquite*	376	369	7	312	64
North Las Vegas	7,602	7,782	-180	7,758	-156
Reno	6,179	6,183	-4	5,990	189
Sparks	2,476	2,450	26	2,371	105

\* State Specific Areas, not endorsed or published by the BLS

SA denotes seasonally adjusted data

## End Notes

Prepared by the Research and Analysis Bureau with contributions from: Jordan Ambrose, Bharman Gulati, Marianne Kattenhorn, Dionny McDonnell, Dave Schmidt, Antonio Solorio, and Tim Wilcox.

Special thanks to all the R and RStudio developers that built the packages to make this possible. Packages used in this report include tidyverse, DBI, tidyquant, data.table, scales, gt, kableExtra, ggthemes, cowplot, gridExtra, RcppRoll, viridis, fiftystater, ggforce, knitr, flexdashboard, lubridate, plotly, patchwork, reshape2.

This workforce product was funded by the Workforce Information Grant awarded by the U.S. Department of Labor's Employment and Training Administration. The product was created by the recipient and does not necessarily reflect the official position of the U.S. Department of Labor. The U.S. Department of Labor makes no guarantees, warranties, or assurances of any kind, express or implied, with respect to such information, including any information on linked sites and including, but not limited to, accuracy of the information or its completeness, timeliness, usefulness, adequacy, continued availability, or ownership. This product is copyrighted by the institution that created it. Internal use by an organization and/or personal use by an individual for non-commercial purposes is permissible. All other uses require the prior authorization of the copyright owner.