

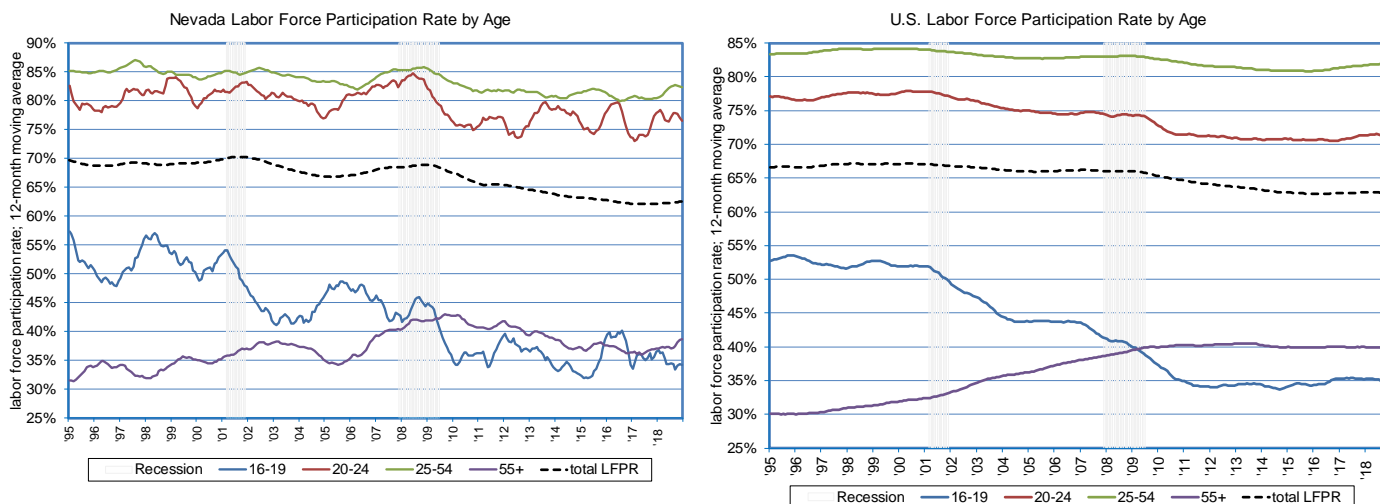
Research Notes



Labor Force Participation Rate by Age
Dionny McDonnell, Economist

Note: 2019:10
January 14, 2019

Nevada's Labor Force Participation Rate by Age Follows National Trends



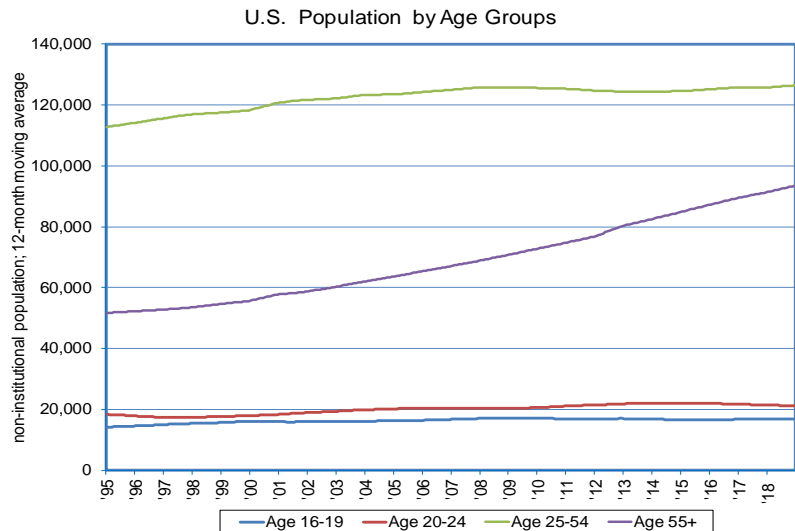
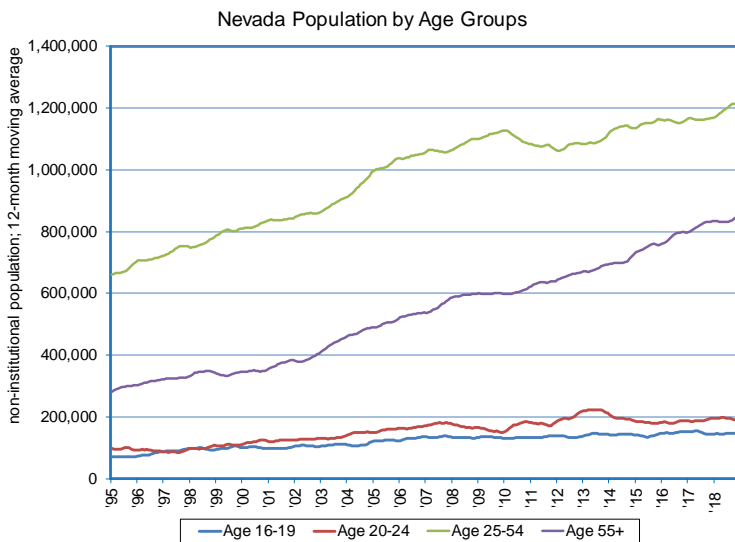
- The Labor Force Participation Rate (LFPR) is a simple measure: the ratio of the labor force relative to the non-institutional population (16 years and older). It measures the extent to which Nevadans are participating in the workforce, either as workers or job seekers. The monthly Current Population Survey (CPS), sponsored by the Census Bureau and the Bureau of Labor Statistics, provides LFPR estimates dating back to 1976.
- In the Silver State, from 1995 to early 2001, the LFPR averaged 69.1%; measured on a 12-month moving average. During the same period, the U.S. rate averaged 67%. In fact, from 1977 to early 2016 the Silver State's LFPR was higher than the nation's, which amounts to nearly four decades. In Nevada, the labor force growth rate was much lower than the population growth rate since 2001, causing the LFPR to decline. In early-2016 Nevada's LFPR dropped to 62.6% which is below the nation's. However, it has remained within one percentage point of difference. The LFPR in Nevada increased over the year from 62.1% in December 2017 to 62.6% in December 2018. This compares to 62.9% nationwide in December 2018.
- CPS estimates dating back to 1994 provide information about the LFPR by age in the Silver State. In Nevada teenagers and people 55 years old and over, have a lower LFPR compare to young adults (20-24 years old) and prime working people (25-54 years old). The same trends are observed nationwide. Teenagers tend to be enrolled in school, this in part could explain their low LFPR. Those 55 years old and over, start entering retirement age.

Continues on next page

Research Notes



- In 1995 the overall LFPR stood at 68.8%. Teenagers made up 6.3% of the population, the teenage LFPR was 51%; those 55 years old and over represented 25.4% of the population and their LFPR stood at 33.8%. Young adults made up 8.8% of the population and the LFPR for this age group was 78.5%. Prime working people represented 59.6% of the population, the LFPR for this group was 84.8%.
- In 2018 the overall LFPR decreased to 62.6% from 68.8% in 1995. In 2018, teenagers share of the population is 6.2% and their LFPR is 34.2%. Those 55 years old and over made up 35.6% of the population, their LFPR is 38.6%. Young adults share of the total population is 7.9% and their LFPR is 76.5%. Prime working people represented 50.4% of the population, the LFPR for this age group is 82.4%.



Research Notes



This workforce product was funded by a grant awarded by the U.S. Department of Labor's Employment and Training Administration. The product was created by the recipient and does not necessarily reflect the official position of the U.S. Department of Labor. The U.S. Department of Labor makes no guarantees, warranties, or assurances of any kind, express or implied, with respect to such information, including any information on linked sites and including, but not limited to, accuracy of the information or its completeness, timeliness, usefulness, adequacy, continued availability, or ownership. This product is copyrighted by the institution that created it. Internal use by an organization and/or personal use by an individual for non-commercial purposes is permissible. All other uses require the prior authorization of the copyright owner.