

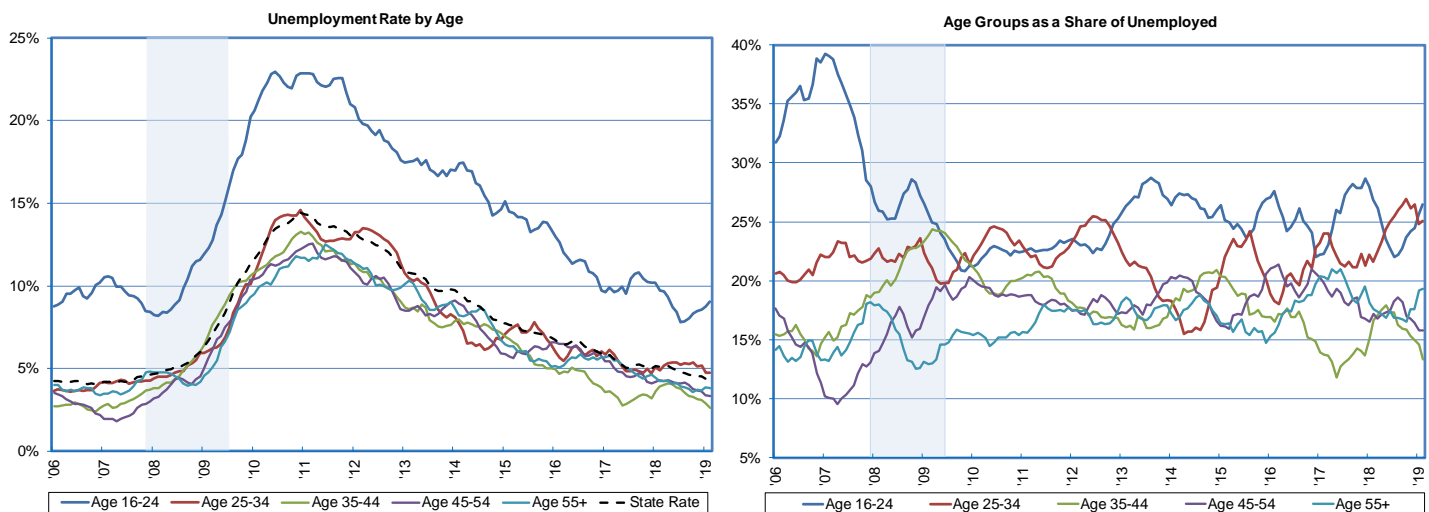
Research Notes



Unemployment Rate by Age
Michael La Rue, Economist

Note: 2019:34
March 20, 2019

Unemployment Rates in All Age Groups are Returning to Historical Levels



- Information from the monthly Current Population Survey (CPS), sponsored by the Census Bureau and the Bureau of Labor Statistics, allows for the analysis of the unemployment rate by age in Nevada, and the percentage that each age group represents of the unemployed. Data from the CPS unemployment rate by age estimates are examined from 2005 through February 2019 using a 12-month moving average.
- The two charts above show the unemployment rate by age, and share of the unemployed of each age group of the total unemployed. These show differences in the unemployment rates of each age group, and if a specific age group has been increasing or decreasing as a share of the unemployed.
- On a state level unemployment rates of all age groups are returning to the historical averages. In February 2019 the total unemployment rate was 4.3 percent while the average from 1996 through 2006 was 4.8 percent.
- In February 2019 the unemployment rate for the 16-24-year-old age group was 9.1 percent. At the same time, they comprised 26.5 percent of the unemployed while comprising 12.6 percent of the Nevada labor force. As a share of the unemployed the 16-24 age cohort went from being 39.3 percent of the unemployed in January 2007 to 20.8 percent of the unemployed in November 2009. Over the same time, this group went from being 15.7 percent of the total labor force to 12.1 percent, partly due to individuals from this cohort leaving the labor force altogether. This explains some of this decrease as individuals left the labor force.
- For the 25-34 age group the unemployment rate was 4.7 percent in February 2019. They comprised 25.1 percent of the unemployed increasing from 21.6 percent in February 2018.

Research Notes



- The unemployment rate for the 35-44 age group was 2.6 percent in February 2019 down from 3.9 percent in February the previous year. From November 2006 to May 2009 there was a notable increase in this groups percentage of the unemployed going from 13.6 percent in to 24.2 percent. Since that peak in May 2009 this group's percentage of the unemployed has been trending down, and was 13.3 in February 2019.
- Among the 45-54 age group there was a similar increase in the percentage of the unemployed for this age group from 9.6 percent in April 2007 to 20.3 percent of December 2009. Since then the percentage of unemployed has trended downward to 15.8 percent in February 2019. The unemployment rate of 3.3 percent in February 2019 is lower than the previous year's rate of 4.3 percent.
- The 55 and older age group had an unemployment rate of 3.8 percent in February 2019. This group has seen an upward trend in their percentage of the unemployed going from 14.1 percent in January 2006 to 19.4 percent in February 2019. There has been a corresponding increase in their percentage of the labor force as they have gone from 15 percent in January 2006 to 21.8 percent in February 2019 explaining some of the increase.
- Nevada Job Connect offers employment services including help with job searches, resume preparation, interview skills, resource centers, skills assessment, proficiency testing, and training for a new job. Their website has more information at <http://www.nevadajobconnect.com/>.

This workforce product was funded by a grant awarded by the U.S. Department of Labor's Employment and Training Administration. The product was created by the recipient and does not necessarily reflect the official position of the U.S. Department of Labor. The U.S. Department of Labor makes no guarantees, warranties, or assurances of any kind, express or implied, with respect to such information, including any information on linked sites and including, but not limited to, accuracy of the information or its completeness, timeliness, usefulness, adequacy, continued availability, or ownership. This product is copyrighted by the institution that created it. Internal use by an organization and/or personal use by an individual for non-commercial purposes is permissible. All other uses require the prior authorization of the copyright owner.